

**TARCOG Safety Coalition**  
***Regional Safety Action Plan***  
***Development Meeting #1***



*presented to*

**Alabama Department  
of Transportation**

*presented by*

**Cambridge Systematics, Inc.**



July 14, 2015

## Agenda

- Welcome and introductions
- Project purpose and need
- Overview – Alabama SHSP Update and Regional Safety Action Plan Development Process
- TARCOG's safety challenges
- Proven effective strategies and countermeasures
- Recruiting additional stakeholders
- Action items and next steps



## Introductions

---

- ④ Name
- ④ Agency/Organization
- ④ How you hope to improve transportation safety in the TARCOG region?



3

## Purpose and Need

---

- ④ States should update SHSPs every five years
- ④ States should consider additional safety factors (e.g., RSA findings, rural roads, bicyclists, and pedestrians, etc.)
- ④ Include state's definition of High Risk Rural Roads
- ④ Include strategies to address older driver and pedestrian safety, if there has been an increase fatalities and serious injuries to older drivers and pedestrians
- ④ States must evaluate their SHSP on a regular basis



4

## SHSP Features

---

- Consultative with multidisciplinary groups/agencies
- Coordination
- Data-driven problem identification
- A performance-based approach
- Use of proven effective strategies and countermeasure
- Addressing 4 Es when determining highway safety strategies



5

## Benefits - Join the Journey!

---

- Safer Roads and Streets
- Increased Public Support
- Access to Data and Expertise
- Potential Funding Eligibility
- Capacity Building
- Networking
- And, More!



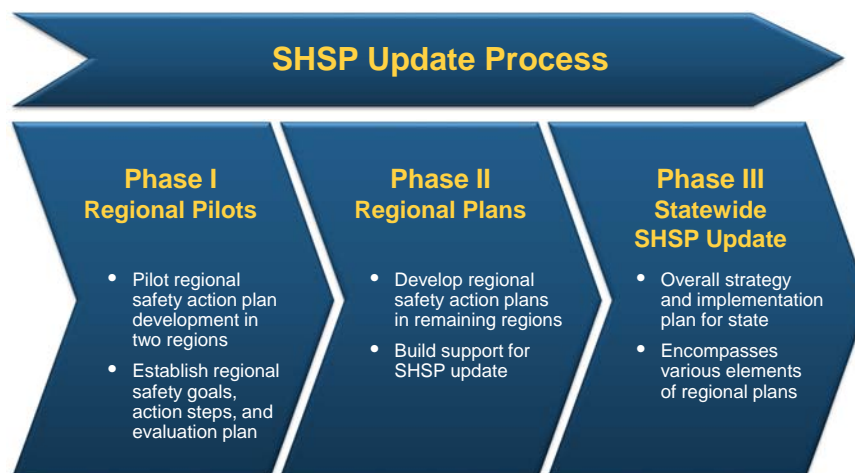
6

# ALABAMA SHSP UPDATE AND REGIONAL SAFETY PLAN DEVELOPMENT PROCESS



7

## SHSP Update Process



8

## Regional Safety Plan Development Process



9

## TARCOG'S SAFETY CHALLENGES



10

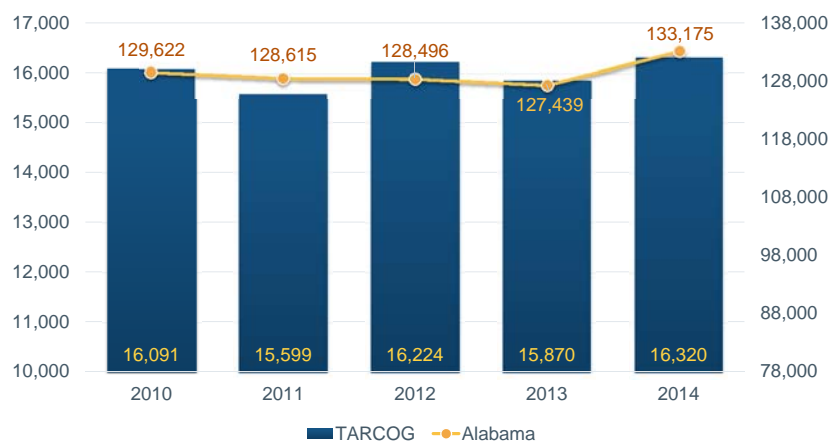
## Questions for Consideration

- ❖ In what specific area/mode/population is transportation safety a concern?
- ❖ What transportation safety concerns have been raised by the public?
- ❖ What are your ideas for safety solutions?

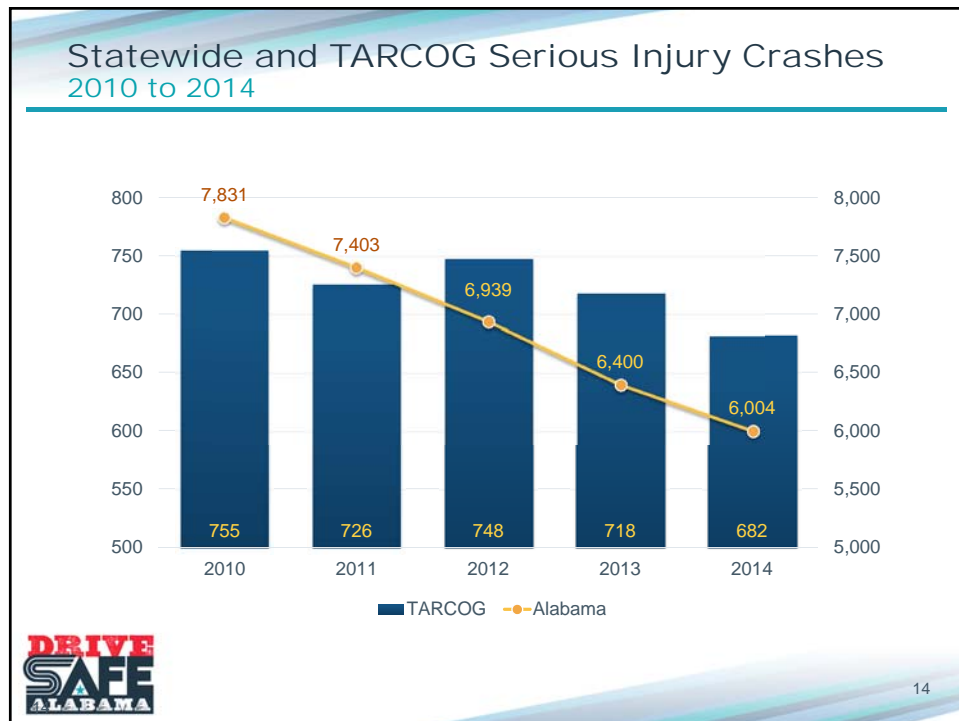
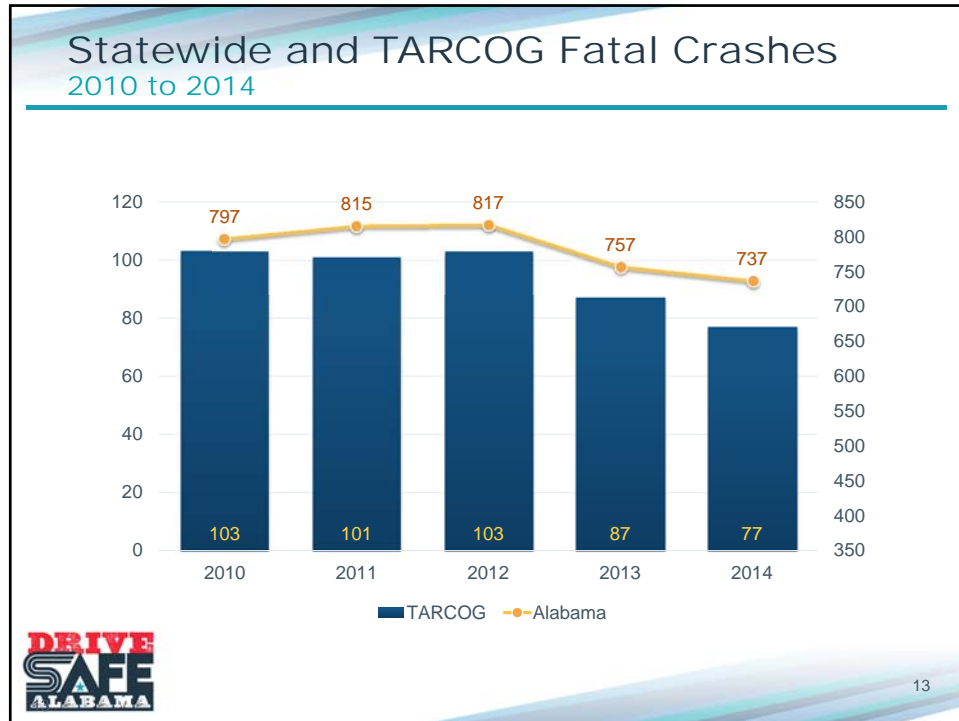


11

## Statewide and TARCOG Crashes 2010 to 2014



12



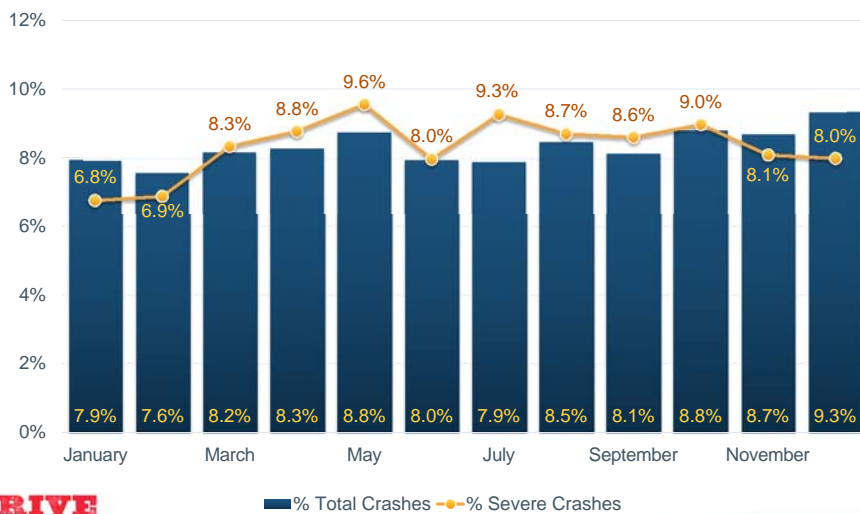
## Percent of All Crashes and Serious Crashes By Type, 2010 to 2014

Crash Characteristic	Percent of Total Crashes	Percent of Fatal Crashes	Percent of Serious Injury Crashes
Single Vehicle Crash (RD)	19%	43%	39%
Side Impact (90 degrees)	11%	13%	15%
Head-On (front to front only)	2%	11%	6%
Rear End (front to rear)	36%	7%	14%
Side Impact (angled)	8%	6%	6%
Other	2%	5%	2%
Angle Oncoming (frontal)	3%	4%	4%
Angle (front to side) Opposite Direction	4%	3%	4%
Sideswipe - Same Direction	7%	1%	1%
Sideswipe - Opposite Direction	2%	0%	1%
Angle (front to side) Same Direction	3%	0%	2%
Backing	1%	0%	0%
Unknown	0%	0%	0%



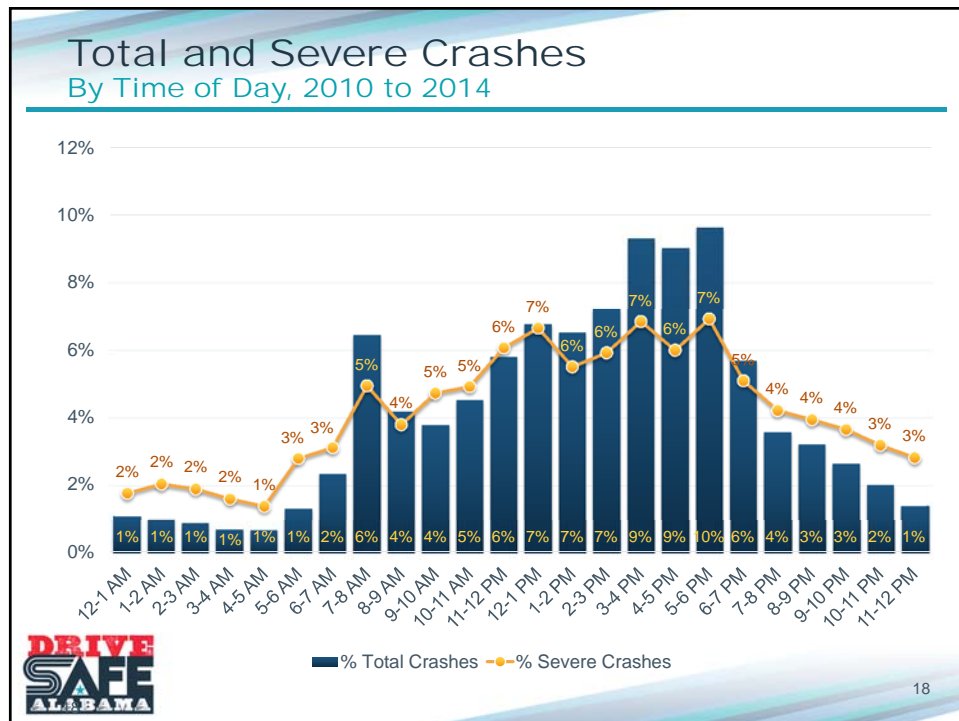
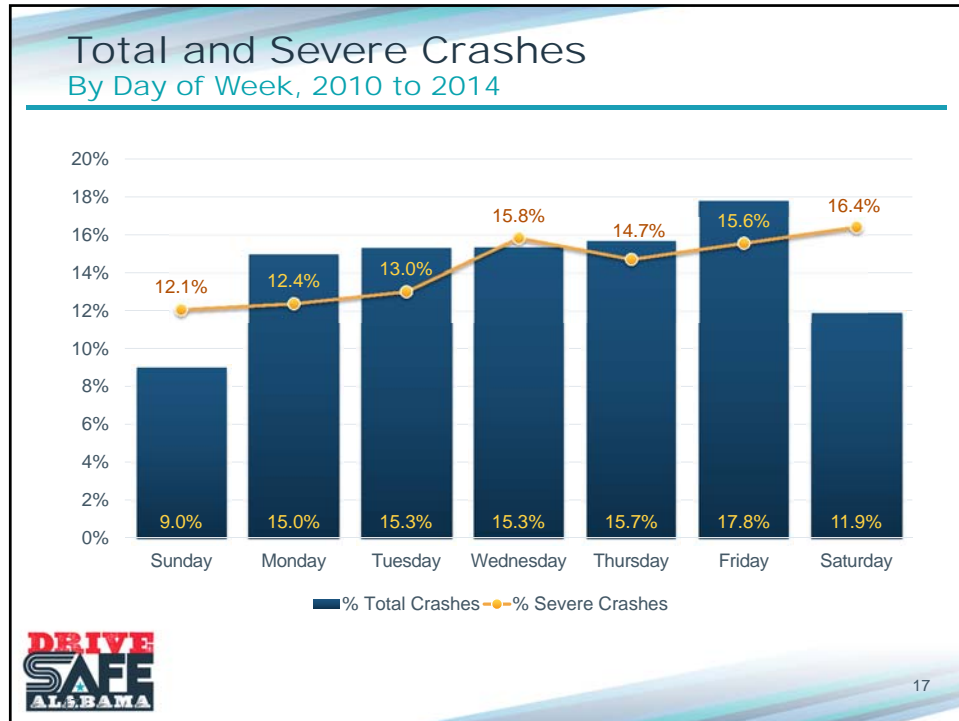
15

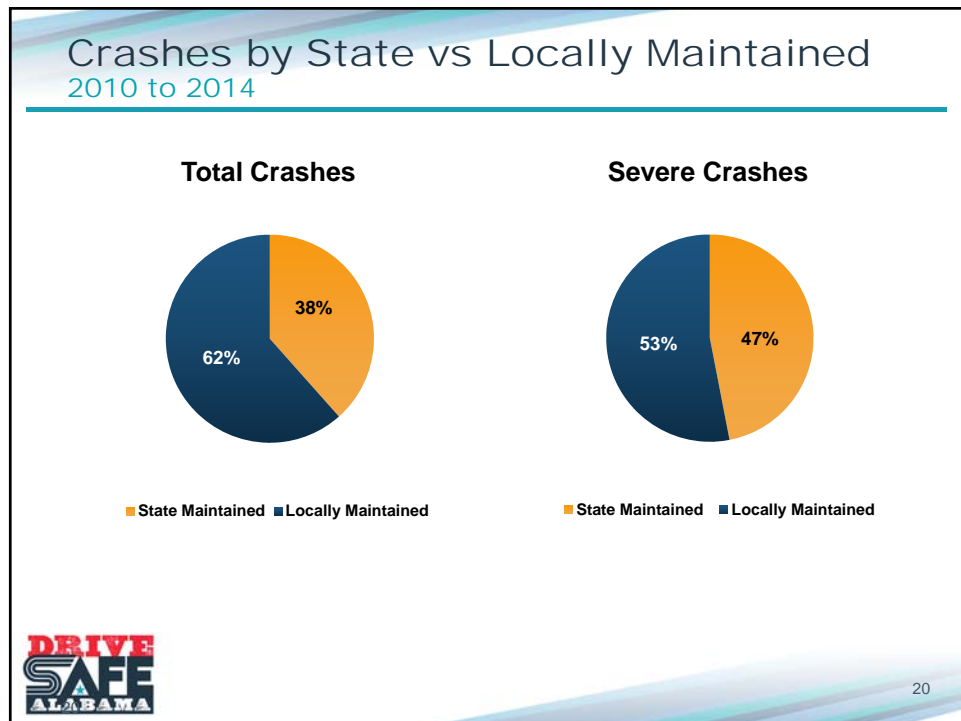
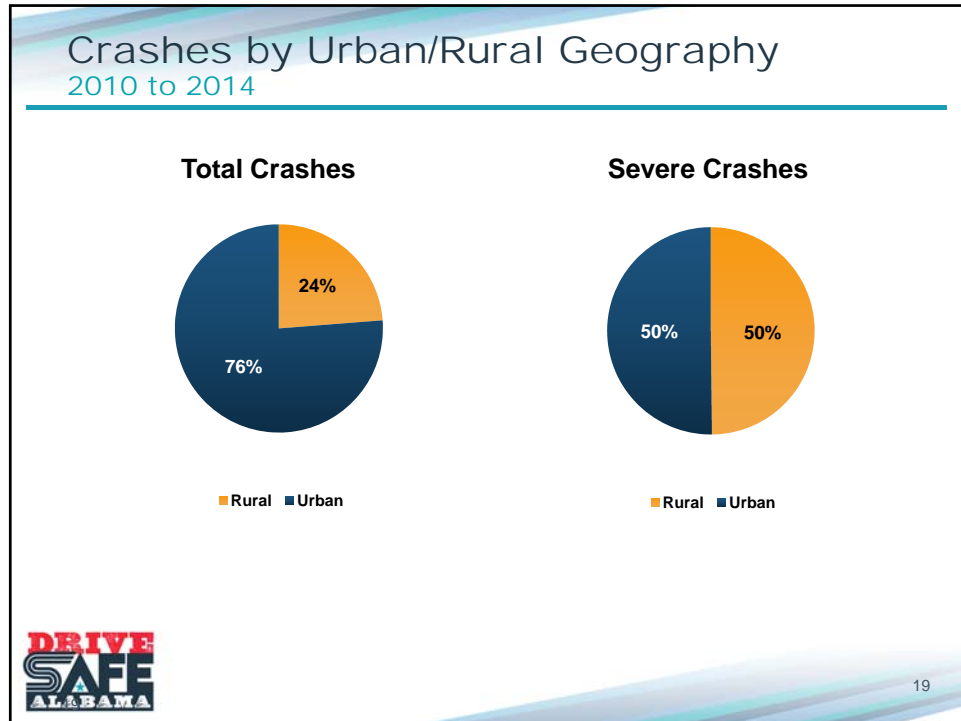
## Total and Severe Crashes By Month, 2010 to 2014

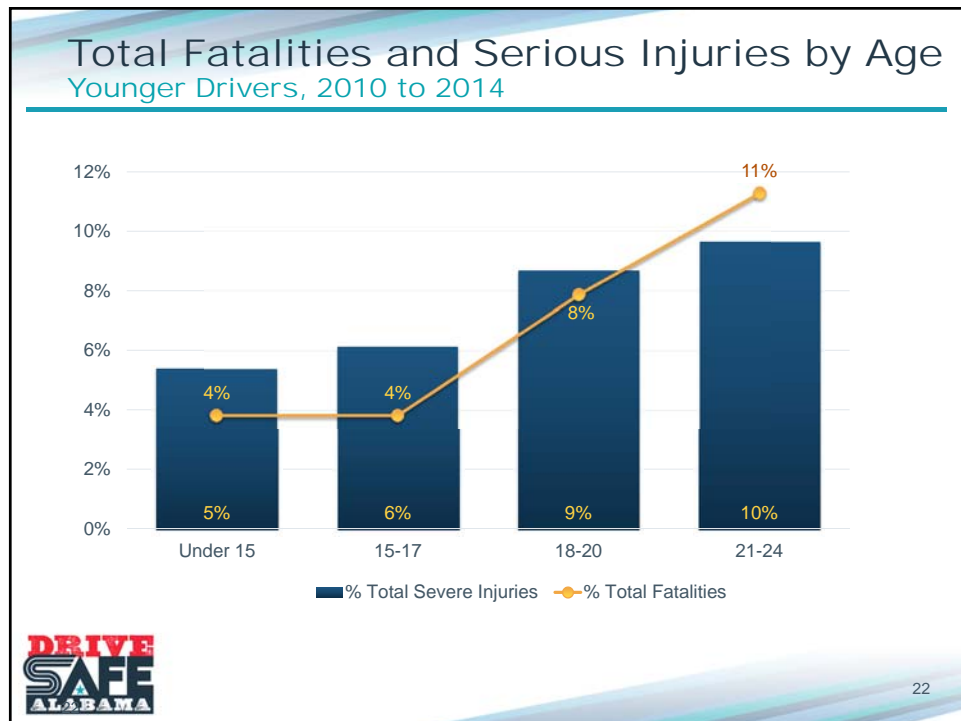
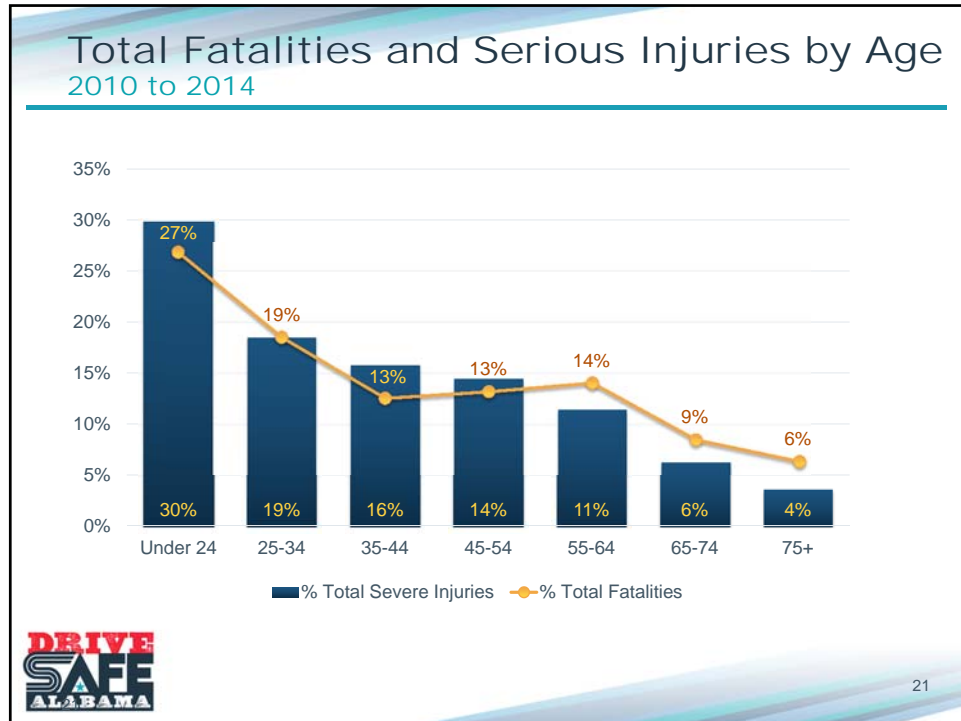


16



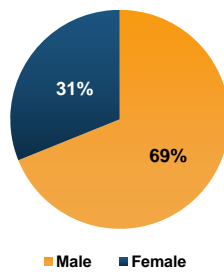




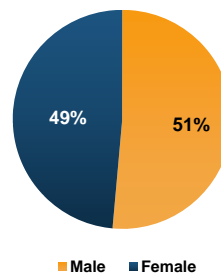


## Total Fatalities and Serious Injuries by Gender 2010 to 2014

**Total Fatalities**



**Total Serious Injuries**

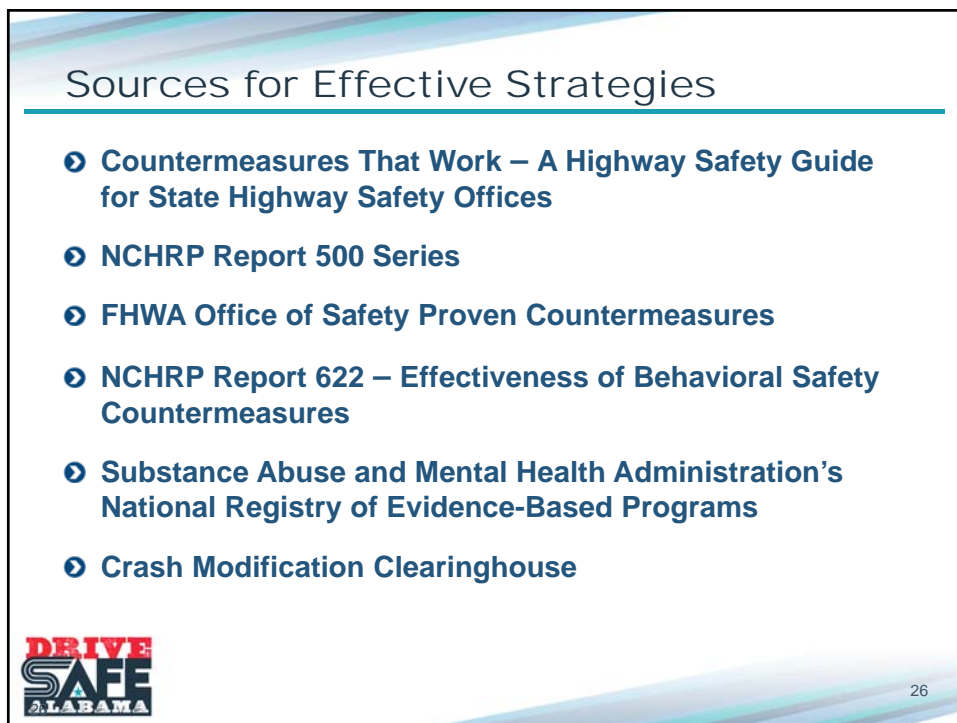


23

## Emphasis Area Data Fatalities and Serious Injuries, 2010 to 2014

Emphasis Areas	Total Fatalities	Percentage of Total Fatalities	Total Serious Injuries	Percentage of Total Serious Injuries
Aggressive Drivers	266	52%	1,944	41%
Roadway Departure	241	47%	2,009	42%
Younger Driver(15-25)	191	37%	2,046	43%
Intersection	156	31%	2,093	44%
Speeding	156	31%	867	18%
Impaired Driver	127	25%	693	14%
Older Driver (65+)	95	19%	876	18%
Pedestrian	49	10%	144	3%
Unrestrained	48	9%	228	5%
Motorcycles	48	9%	327	7%
CMV	44	9%	174	4%
Distracted Drivers	35	7%	588	12%







## Safety Stakeholders

- ❖ **Enforcement**
  - » State and local police
- ❖ **Emergency response**
  - » Hospital staff, EMTs, nurses, doctors, administrators
- ❖ **Educators**
  - » Teachers, student advisory groups, highway safety offices, enforcement, DOT
- ❖ **Engineers**
  - » State DOT, MPO, City Public Works

4 Es

DRIVE  
SAFE  
ALABAMA

28

## Who's Missing?

---



29

## NEXT STEPS & ACTION ITEMS



30

## Next Steps

---

- Recruit additional stakeholders
- Identify date/location for Coalition Meeting #2
  - » Review additional data
  - » Select Emphasis Areas
- Develop Emphasis Area Action Plans
- Finalize Regional Safety Action Plan



31

## Options to Select Emphasis Areas

---

- Select emphasis are by percent of problem
- Use some combination of grouped emphasis areas
- Tiered approach – emphasis areas and topics for consideration
- Retain 2012 Alabama SHSP emphasis areas
  - » Driver behavioral crashes
  - » Infrastructure countermeasures
  - » Legislative initiatives
  - » Traffic safety information systems



32



## Action Items

---

- Next meeting date?
- Assignments to invite additional stakeholders



33

## Contacts

---

**Steven L. Jones, Jr., Ph.D.**

Associate Professor  
Department of Civil, Construction,  
and Environmental Engineering  
Telephone: 205.348.3137  
Email: [sjones@eng.ua.edu](mailto:sjones@eng.ua.edu)

**Cambridge Systematics, Inc.****Susan Herbel, Ph.D.**

Email: [sherbel@camsys.com](mailto:sherbel@camsys.com)

**Eric Tang**

Email: [etang@camsys.com](mailto:etang@camsys.com)



34