



2018 CRASH FACTS

ALABAMA DEPARTMENT
OF TRANSPORTATION





LETTER FROM THE

Transportation Director

Safety is paramount in the work we do at the Alabama Department of Transportation. It begins with our pre-construction process, where we plan and design the safest roads and bridges possible. Whether it's planning for new construction, replacing functionally obsolete or structurally deficient bridges, or widening shoulders scored with rumble strips on rural resurfacing projects, we focus on safety.

Analyzing data about crashes is an important part of how ALDOT personnel identify specific opportunities for improving the safety of our transportation system. We then use innovative engineering techniques, perform routine maintenance, and manage funding in a fiscally responsible and priority-based manner to create safer roads.

As you review the data in the 2018 Crash Facts book, I challenge you to consider your personal commitment to safety and the things you can do to help reduce the number of crashes in Alabama. Always follow speed limits; drive sober; buckle up; share the road with motorcycles, bicycles and pedestrians; obey railroad crossing signals; avoid any and all forms of distracted driving; and lead by example by teaching young people safe driving habits.

Wearing a seat belt and making sure that everybody in the vehicle is wearing a seat belt is the single most important safety habit you can adopt. You will see on page 22 of 2018 Crash Facts that **ALMOST 60 PERCENT OF PEOPLE WHO DIED IN CRASHES WERE NOT WEARING A SEAT BELT.** Statistics clearly show that seat belts save lives. Violators of Alabama's seat belt laws may be fined and assessed points on their driver licenses. Simply put, there are plenty of good reasons to buckle up.

I hope you will look further into 2018 Crash Facts to find even more important insights into making our roads safe.

John R. Cooper
Transportation Director

2018 CRASH FACTS Table of Contents

4	Quick Facts
5	Ten-Year Crash Data
6	Fatality Rate Trends
7	Types of Crashes
8	Time Data
10	Involvement by Age and Gender
12	Crash Location
13	Celebrate Life Campaign
14	Crash Environment
15	Holiday Crash Statistics
16	Type of Roadway
17	Alcohol and Drug Involvement
18	Intersection Crashes by County
19	Non-Intersection Crashes by County
20	Driver Contributing Circumstances
21	Motorcycle Crash Statistics
22	Safety Restraint Usage
24	Bicycle Crash Statistics
25	Pedestrian Crash Statistics
26	Train Involved Crash Statistics
27	Work Zone Crash Statistics
28	Truck Crash Statistics
29	Fatalities by County
30	Traffic Crashes by County
35	Comparative County Statistics
37	Comparative City Statistics
44	Transforming Alabama's Safety Culture
47	Media Contact Information

Data for this report is provided by the Center for Advanced Public Safety at The University of Alabama using crash data provided by the Alabama Law Enforcement Agency.





2018 Crash Data Quick Facts

	2018 CRASH DATA	2018 VS. 2017
All Crashes	159,925	Increased 1.87%
Injuries	47,419	Decreased 0.74%
Fatal Crashes	872	Increased 1.75%
Fatalities	953	Increased 0.53%
Registered Vehicles in Alabama	5,696,657	Increased 2.23%
Licensed Drivers in Alabama	4,033,178	Increased 0.66%
Vehicle Miles Traveled in Alabama	70,154,460,000	Decreased 2.13%

Based on 2018 data, typical drivers in Alabama have greater than a **one in three chance of involvement in an injury or fatal crash** operating a vehicle over their lifetime.

The probability of any given driver being in a crash of any severity during their lifetime is greater than **90%**.

In 2018, there were **39 certified fatalities** associated with **distracted driving**.

There were 953 people killed in 872 fatal crashes.

A traffic crash was reported every 3 minutes and 17 seconds.

A person was injured in a traffic crash every 11 minutes and 5 seconds.

A person was killed in a traffic crash every 9 hours and 10 minutes.

For fatal crashes where a restraint was available for use, almost 56 percent of those who died from a vehicle crash were not wearing a seat belt.

Most Alabama crashes (77 percent) occurred in urban areas, but most fatalities (60 percent) occurred in rural areas.

Of all fatal crashes, 9 percent were caused by drivers 19 or under, and 20 percent were caused by drivers under 25 years of age.

For each fatality, there were almost 50 injuries.

Of all fatal crashes, almost 49 percent occurred at night (including dusk and dawn).

There were 106 pedestrian fatalities.

There were 83 fatalities involving motorcycle or moped riders.

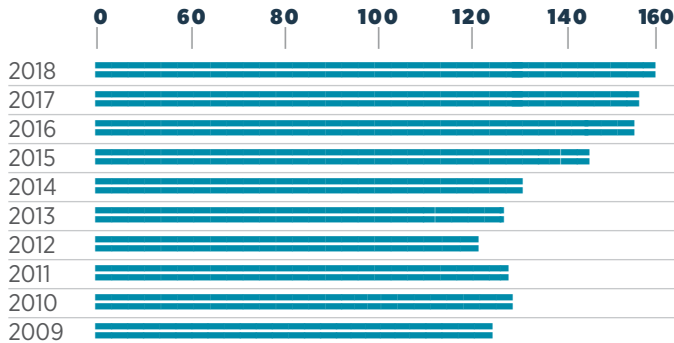
Bicyclists accounted for 9 fatalities.

There were 12 fatalities with train involvement.

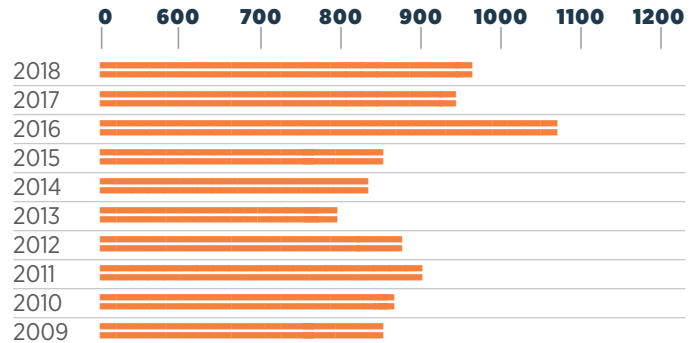
For front seat occupants who are in vehicle crashes, the probability of being killed is 50 times higher for those not wearing safety belts than those who are properly restrained.

Ten Year **CRASH DATA 2009-2018**

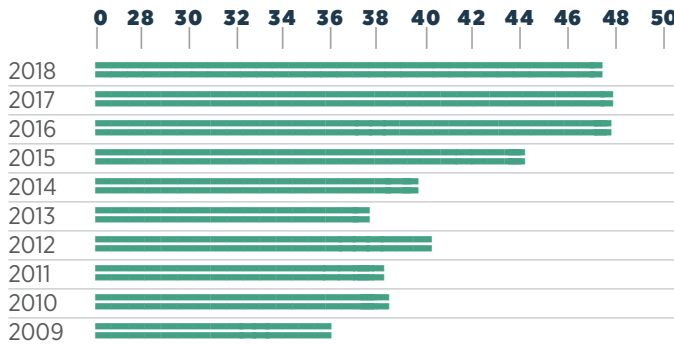
CRASHES UP 29.28% IN THOUSANDS OF CRASHES



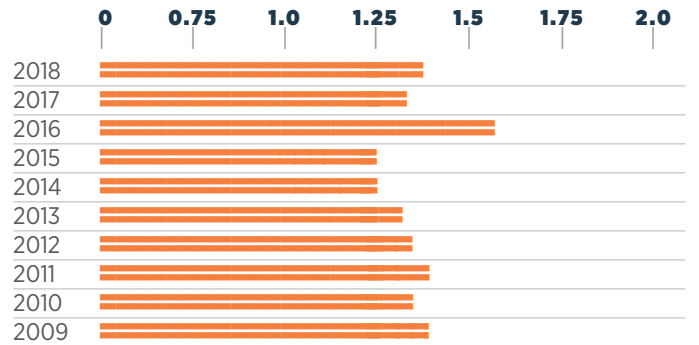
FATALITIES UP 12.38% IN NUMBER OF FATALITIES



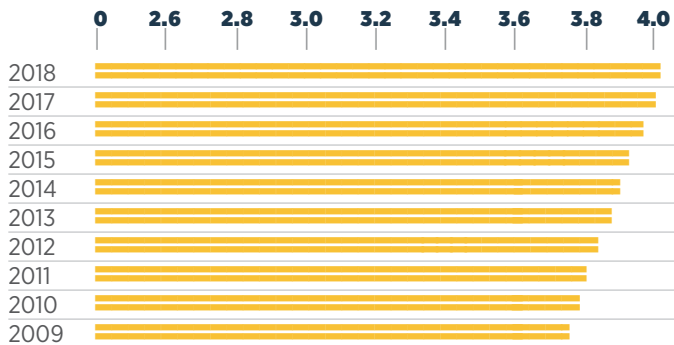
INJURIES UP 31.72% IN THOUSANDS OF INJURIES



MILEAGE DEATH RATE DOWN 1.45% IN FATALITIES PER 100 MILLION VEHICLE MILES



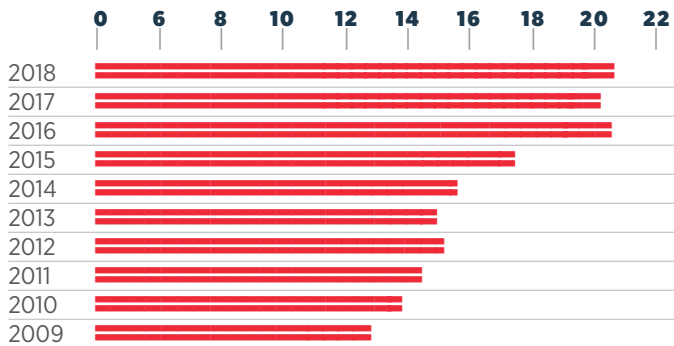
LICENSED DRIVERS UP 6.61% IN MILLIONS OF DRIVERS



MOTOR VEHICLE REGISTRATIONS UP 14.39% IN MILLIONS OF VEHICLES



ECONOMIC LOSS UP 56.13% IN BILLIONS OF DOLLARS



VEHICLE MILES TRAVELED UP 14.44% IN BILLIONS OF MILES TRAVELED



The increase/decrease percentage of change includes the entire time frame represented.



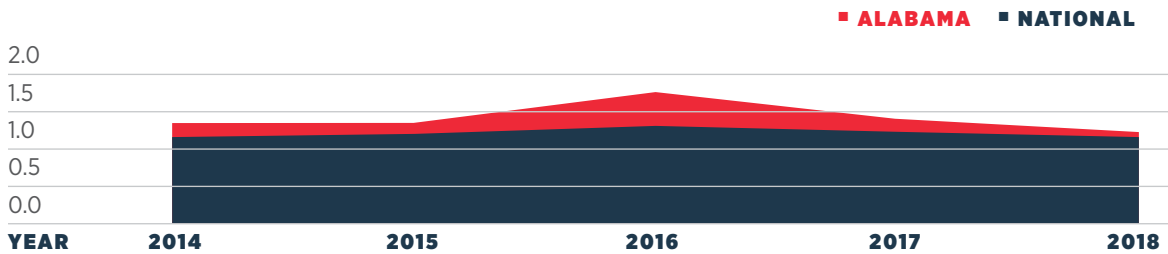
Fatality Rate **TRENDS**

CRASH TOTALS AND RATES FOR THE PAST FIVE YEARS

YEAR	TOTAL CRASHES	TOTAL INJURIES	TOTAL FATALITIES	ALABAMA FATALITY RATE (PER HMVM*)	NATIONAL FATALITY RATE (PER HMVM*)
2014	133,219	39,518	821	1.25	1.08
2015	147,452	44,020	849	1.26	1.15
2016	155,907	47,653	1,089	1.56	1.19
2017	156,993	47,771	948	1.34	1.16
2018	159,925	47,419	953	1.36	1.14

*Hundred Million Vehicle Miles

FATALITY RATE: STATE VERSUS NATIONAL



Types OF CRASHES

FIRST HARMFUL EVENT (ORDERED BY FATALITIES)

EVENT	TOTAL CRASHES	% OF ALL CRASHES	NON-FATAL INJURIES	FATALITIES
Hit Other Vehicle	114,734	71.7%	32,342	428
Hit Fixed Object or Other Object	18,140	11.3%	6,527	273
Hit Pedestrian	583	0.4%	507	53
Overturning	1,461	0.9%	938	43
Hit Parked Vehicle	7,588	4.7%	434	8
Hit Bicyclist	165	0.1%	121	8
Hit Railway Train	59	0.1%	36	6
Other Non-Collision	428	0.3%	126	4
Hit Animal	2,702	1.7%	257	4
All other	14,065	8.8%	4,160	126
TOTAL	159,925	100.0%	45,448	953

*Includes only those pedestrian events and train events in the First Harmful Event; for more details, see pedestrian crash statistics on page 25 and train involved crash statistics on page 26.

VEHICLE TYPE

TYPE	VEHICLES INVOLVED	% OF VEHICLES	0	10%	20%	30%	40%	50%	60%
Passenger Car	153,510	51.7%							
Pickup and SUV	115,784	39.0%							
Van	10,936	3.7%							
Truck	10,892	3.7%							
Motorcycle/Moped	1,692	0.6%							
Other	3,783	1.3%							
TOTAL	296,597	100%							

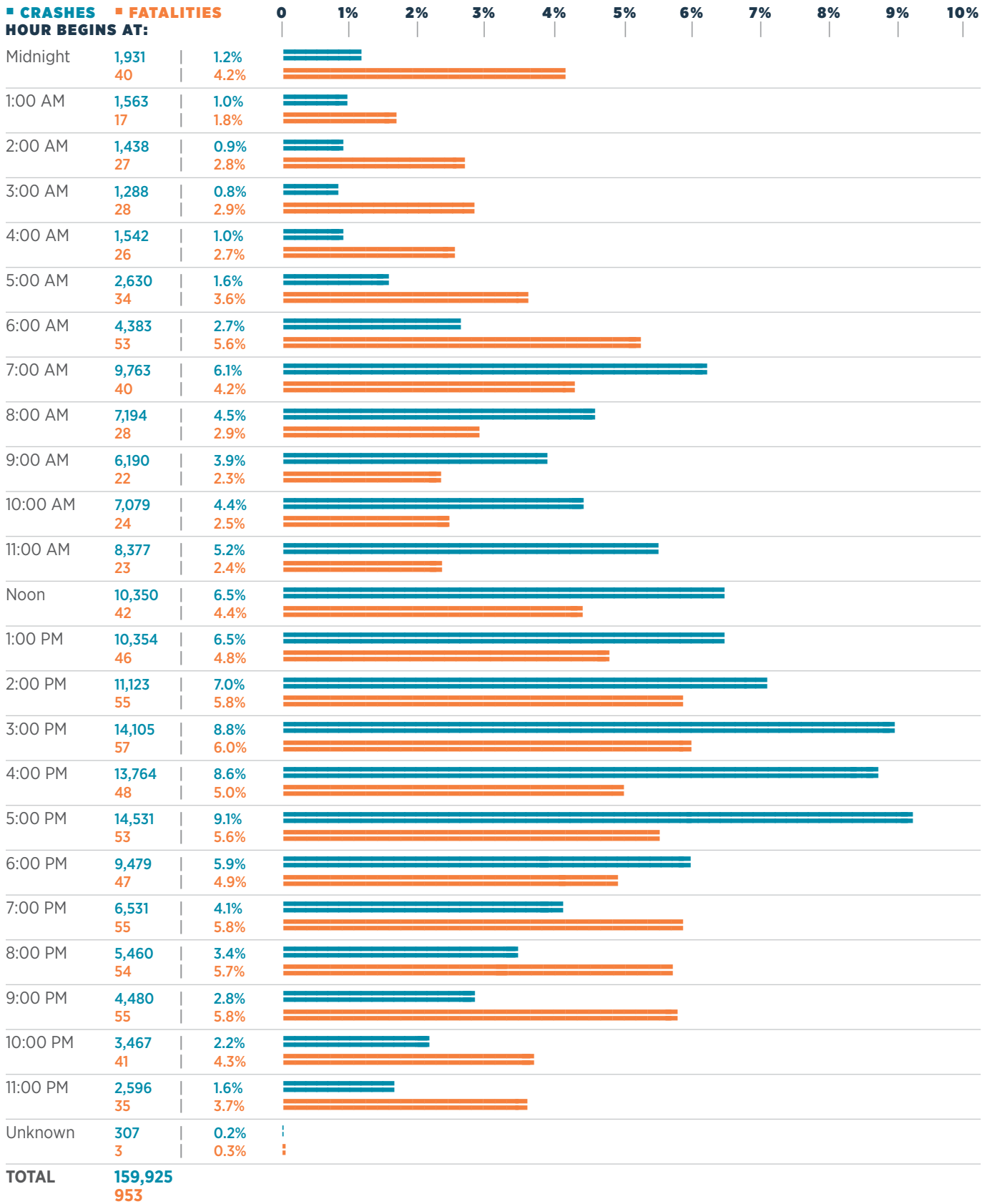
HAZARDOUS CARGO

CARGO TYPE	CRASHES
Gas/Flammable	180 70.9%
Corrosive	36 14.2%
Explosive	6 2.3%
Radioactive	0 0.0%
Other	32 12.6%
TOTAL	254 100.0%

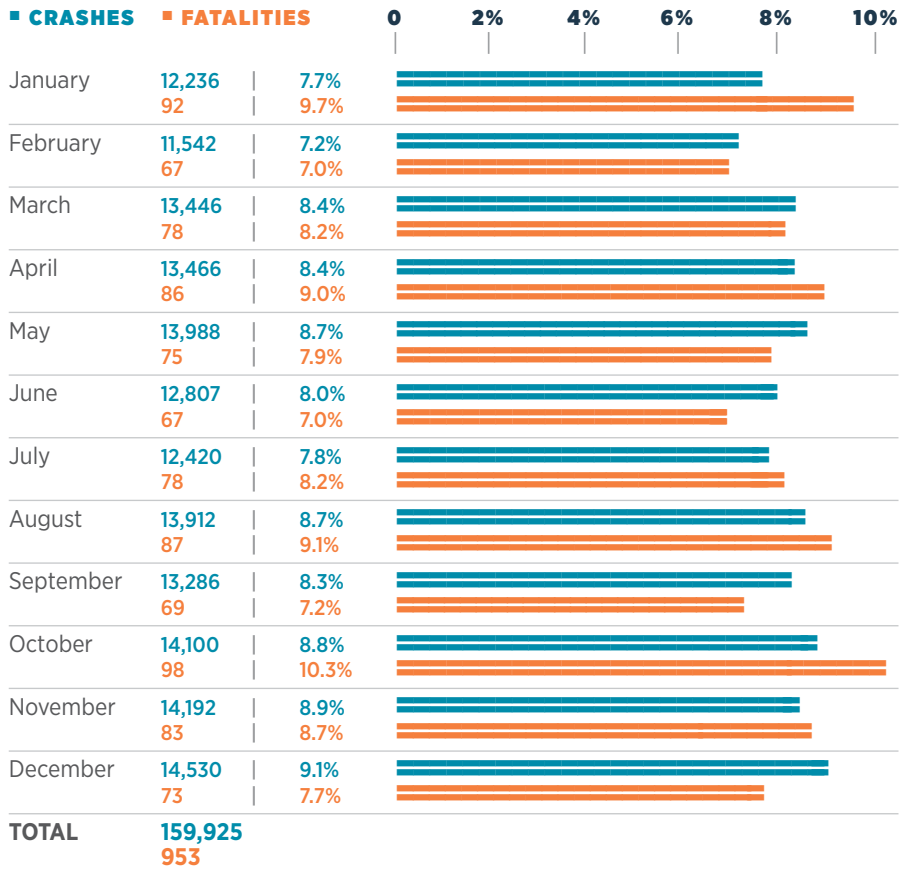


Time DATA

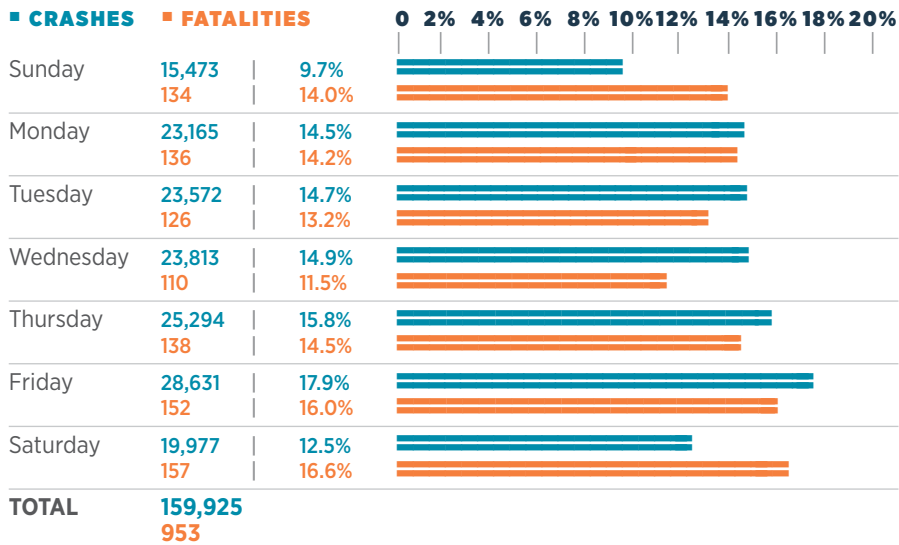
TIME OF DAY



MONTH OF YEAR



DAY OF WEEK



THE MOST
CRASH-PRONE DAY
OF THE WEEK IS
Friday.

THE MOST
FATALITY-PRONE
DAY IS
Saturday.

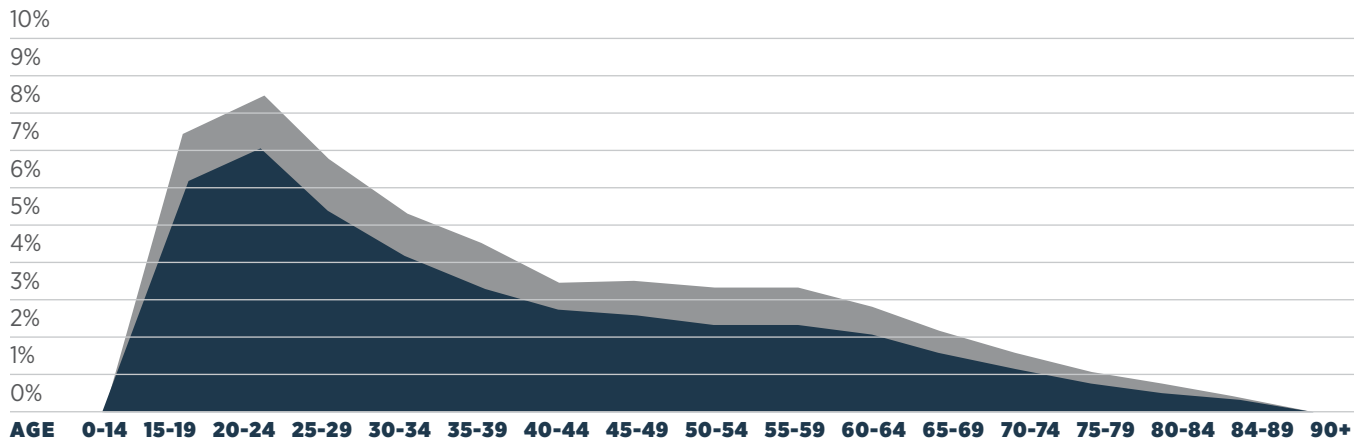
THE MOST
CRASH-PRONE PERIOD
OF THE DAY IS
3pm-6pm.



INVOLVEMENT BY Age and Gender

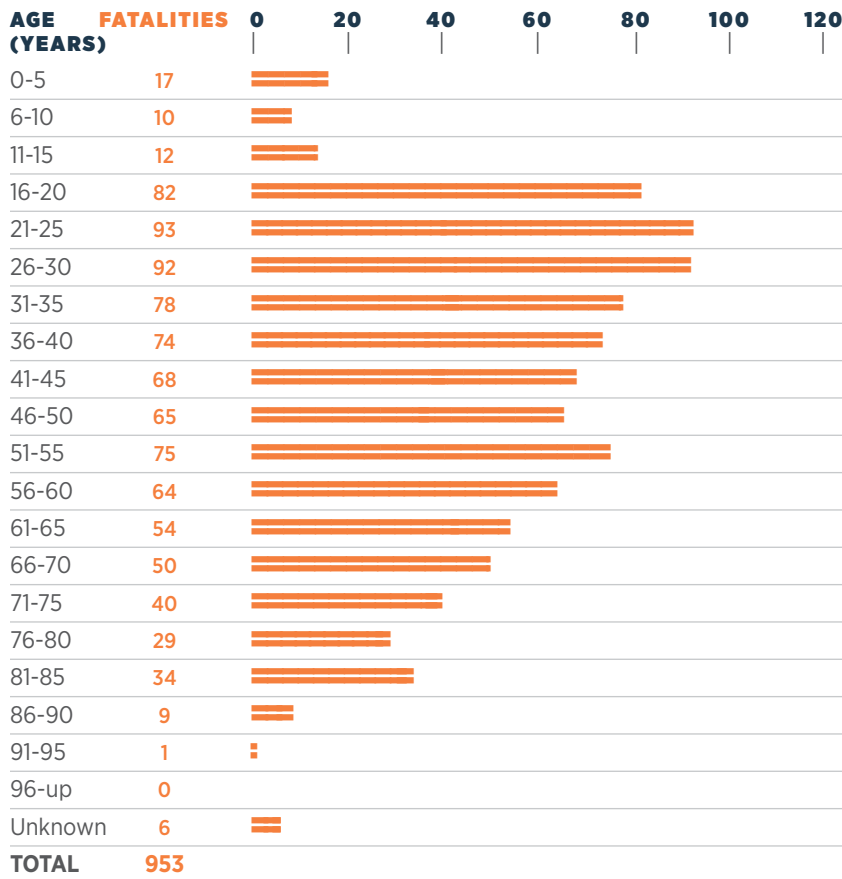
PERCENTAGE CAUSAL DRIVERS* INVOLVED IN ALL TRAFFIC CRASHES BY AGE AND GENDER

■ MALE ■ FEMALE



*The Causal Driver is the driver of the vehicle that was determined to have caused the traffic crash. Crashes for all vehicle types are included. Each crash has only one causal driver.

FATALITIES BY AGE



DRIVERS INVOLVED* IN ALL CRASHES AND FATAL CRASHES BY AGE

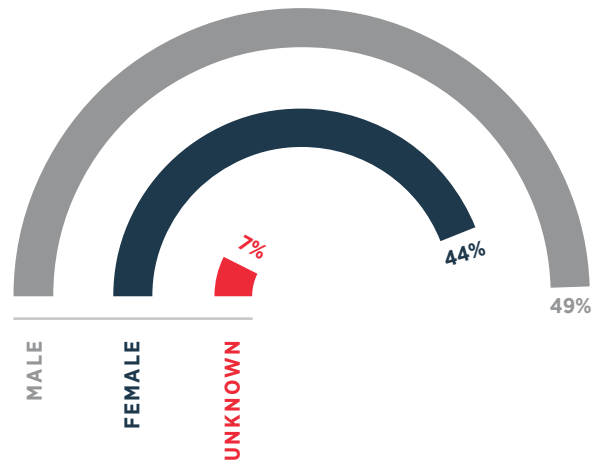
AGE	LICENSED	ALL CRASHES	FATAL CRASHES
0-14	77	106	1
15-19	251,623	28,868	97
20-24	326,547	37,213	140
25-29	349,288	32,018	130
30-34	317,216	26,761	141
35-39	307,204	24,332	117
40-44	291,157	20,895	97
45-49	316,408	20,650	97
50-54	315,675	18,760	108
55-59	339,378	18,489	103
60-64	324,992	15,691	70
65-69	281,212	11,825	58
70-74	231,081	8,592	51
>74	381,320	10,115	83
Unknown	0	22,316	36
TOTAL	4,033,178	296,631	1,329

*Involved drivers include both causal and victim drivers.

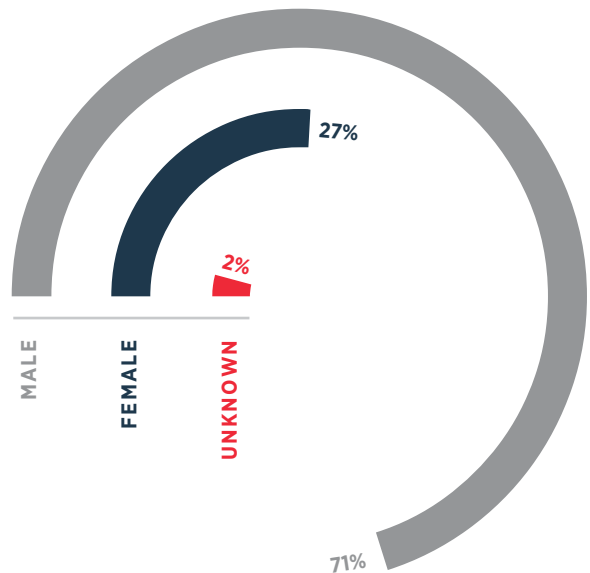
DRIVERS INVOLVED* IN ALL CRASHES AND FATAL CRASHES BY GENDER

GENDER	LICENSED	ALL CRASHES	FATAL CRASHES
Male	1,954,662	146,578	939
Female	2,078,516	129,568	357
Unknown	0	20,485	33
TOTAL	4,033,178	296,631	1,329

GENDER OF DRIVERS INVOLVED IN ALL CRASHES

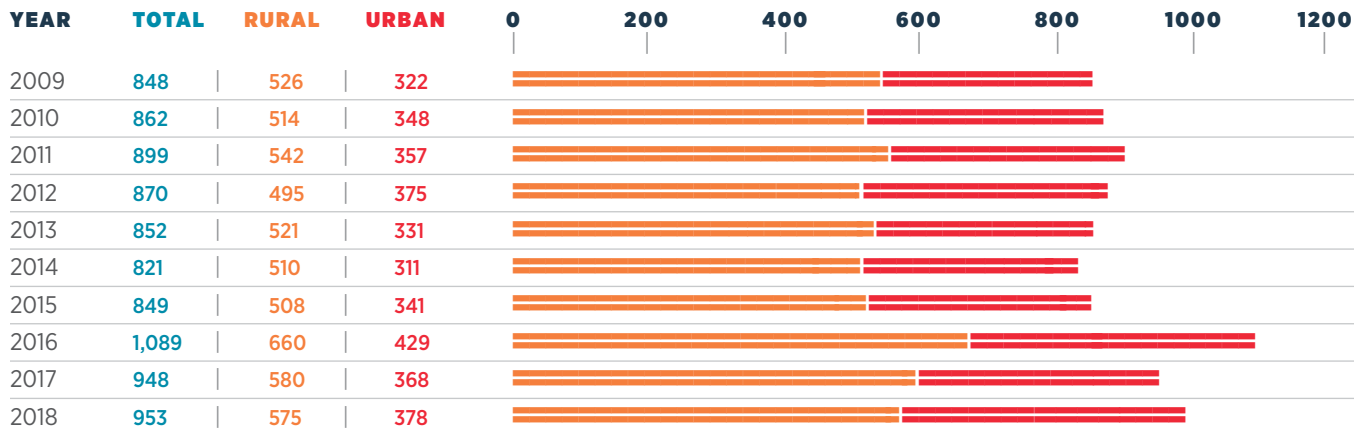


GENDER OF DRIVERS INVOLVED IN FATAL CRASHES



CRASH Location

RURAL VS. URBAN TRAFFIC FATALITIES 10 YEAR DATA



RURAL LOCALE

LOCALE TYPE	CRASHES
Open Country	29,919 81.72%
Residential	3,483 9.51%
Shopping or Business	2,735 7.47%
Manufacturing or Industrial	270 0.74%
School	150 0.41%
Playground	0 0.00%
Other	53 0.15%
TOTAL	36,610 100.00%

CRASH LOCATION

LOCATION	CRASHES
On Roadway	127,431 79.68%
Off Roadway	21,606 13.51%
Intersection	2,733 1.71%
Median	1,898 1.19%
Driveway	29 0.02%
Private Property	0 0.00%
Other	6,228 3.89%
TOTAL	159,925 100.00%

URBAN LOCALE

LOCALE TYPE	CRASHES
Shopping or Business	71,835 58.25%
Residential	29,448 23.88%
Open Country	15,415 12.50%
Manufacturing or Industrial	2,804 2.28%
School	2,080 1.69%
Playground	28 0.02%
Other	1705 1.38%
TOTAL	123,315 100.00%

CAUSAL DRIVER'S RESIDENCE

RESIDENCE WITHIN 25 MILES	PERCENTAGE
Yes	66.55%
No	19.61%
Unknown	13.84%

MOST CRASHES OCCUR
within 25
miles of
THE CAUSAL DRIVER'S
home.

The number of **RURAL** fatalities decreased **0.86%** from 2017 to 2018 and **increased 9.32%** from 2009 to 2018.

The number of **URBAN** fatalities increased **2.72%** from 2017 to 2018 and **increased 17.39%** from 2009 to 2018.

WE CAN'T LIVE LIKE THIS Campaign

In the state of Alabama, **9 percent** of all fatal crashes were caused by **drivers 19 or under** and **20 percent** were caused by drivers **under 25**.

With motor vehicle crashes being the leading cause of death for people 15-19 years old, ALDOT created the relevant “Celebrate Life” PSA to reach Licensed Drivers 16-20.

THE PSA REACHED

71,000
ALABAMIANS

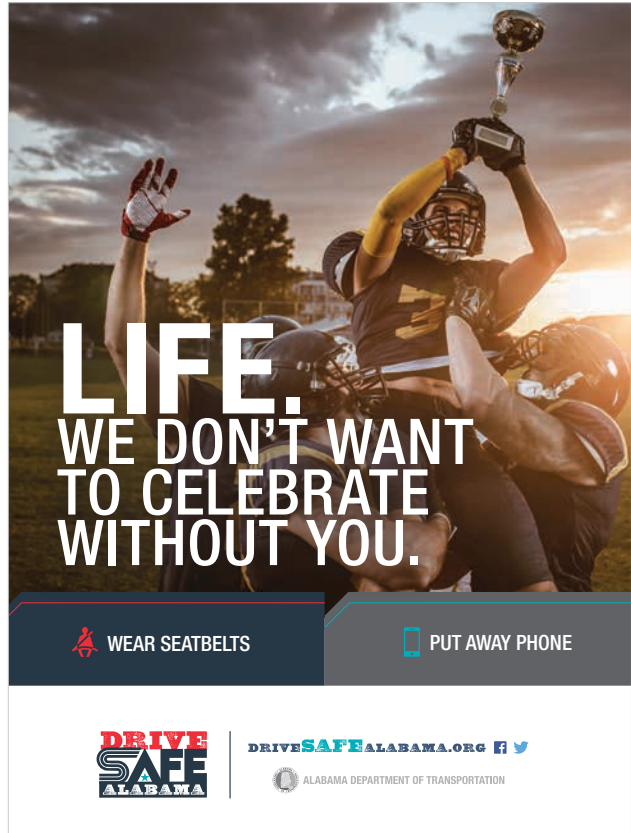
56 state final games where

70% of the audience

were

18 and under

In addition, the awareness created by the PSA during the state finals resulted in a **139.5% year-over-year increase** in traffic to the Drive Safe initiatives web pages on DriveSafeAlabama.org.



Print Advertising for High School Football Programs



Distracted Driving Outdoor Billboard



Seat Belt Outdoor Billboard



Distracted Driving Public Service Announcement
Watch at vimeo.com/291592628/99362df73b



Seat Belt Public Service Announcement
Watch at vimeo.com/291592650/71db580e22



CRASH Environment

TRAFFIC CONTROL

CONTROL TYPE	CRASHES		FATALITIES	
No Control Present	77,320	48.35%	468	49.16%
No Passing Zone	12,238	7.65%	272	28.51%
Stop Sign	13,763	8.61%	67	7.02%
Traffic Signal	37,039	23.16%	63	6.61%
Railroad Device	162	0.10%	7	0.73%
Yield Sign	3,518	2.20%	2	0.21%
Other	3,762	2.35%	39	4.09%
Not Stated	12,123	7.58%	35	3.67%
TOTAL	159,925	100%	953	100%

LIGHT CONDITION

CONDITION	CRASHES		FATALITIES	
Day	114,600	71.66%	471	49.48%
Dark	14,824	9.27%	297	31.13%
Streetlights	22,093	13.82%	136	14.26%
Dusk	4,755	2.97%	27	2.83%
Dawn	2,182	1.36%	17	1.78%
Other/Unknown/NA	1,471	0.92%	5	0.52%
TOTAL	159,925	100%	953	100%

ROAD CURVATURE AND GRADE

CURVE/GRADE	CRASHES		FATALITIES	
Level	107,377	67.14%	466	48.95%
Curve on Hill	8,410	5.26%	154	16.14%
Level Curve	7,680	4.80%	112	11.74%
Downgrade	12,995	8.13%	106	11.11%
Upgrade	10,417	6.51%	59	6.19%
Hillcrest or Sag	1,290	0.81%	25	2.62%
Other/Unknown	11,756	7.35%	31	3.25%
TOTAL	159,925	100%	953	100%

NUMBER OF LANES

LANES	CRASHES		FATALITIES	
Two	68,726	42.97%	586	61.42%
Four	44,985	28.13%	238	24.95%
Six or More	16,465	10.29%	58	6.08%
Three	7,991	5.00%	18	1.89%
Five	6,008	3.76%	16	1.68%
One	3,340	2.09%	5	0.52%
Not Stated	12,410	7.76%	32	3.46%
TOTAL	159,925	100%	953	100%

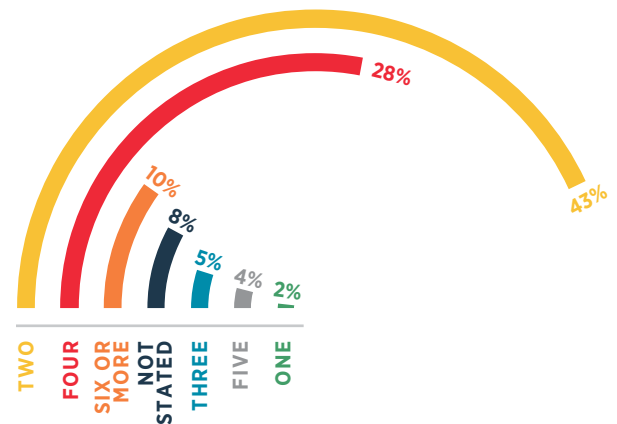
ROAD CONDITION

CONDITION	CRASHES		FATALITIES	
Dry	116,573	72.89%	732	76.84%
Wet	30,382	19.00%	181	18.97%
Icy/Slushy	1,086	0.68%	5	0.52%
Muddy	80	0.05%	1	0.11%
Other/Unknown	11,804	7.38%	34	3.56%
TOTAL	159,925	100%	953	100%

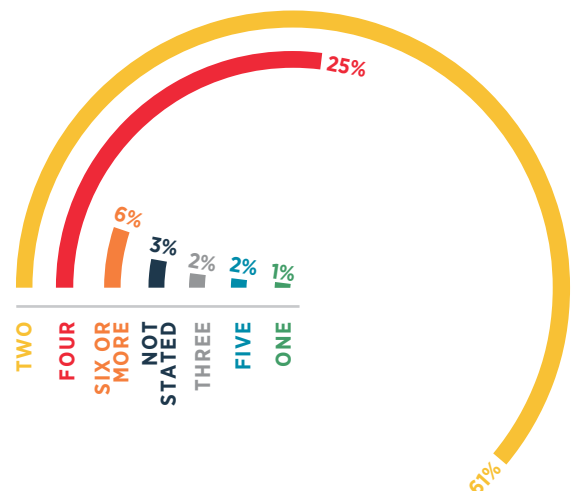
WEATHER

CONDITION	CRASHES		FATALITIES	
Clear	103,113	64.48%	587	61.53%
Cloudy	30,585	19.13%	228	23.90%
Rain	24,426	15.27%	125	13.10%
Fog	757	0.47%	9	0.94%
Snow/Sleet	407	0.25%	0	0.00%
Other	637	0.40%	4	0.53%
TOTAL	159,925	100%	953	100%

CRASHES PER NUMBER OF LANES



FATALITIES PER NUMBER OF LANES



Holiday CRASH STATISTICS

2017 VS. 2018

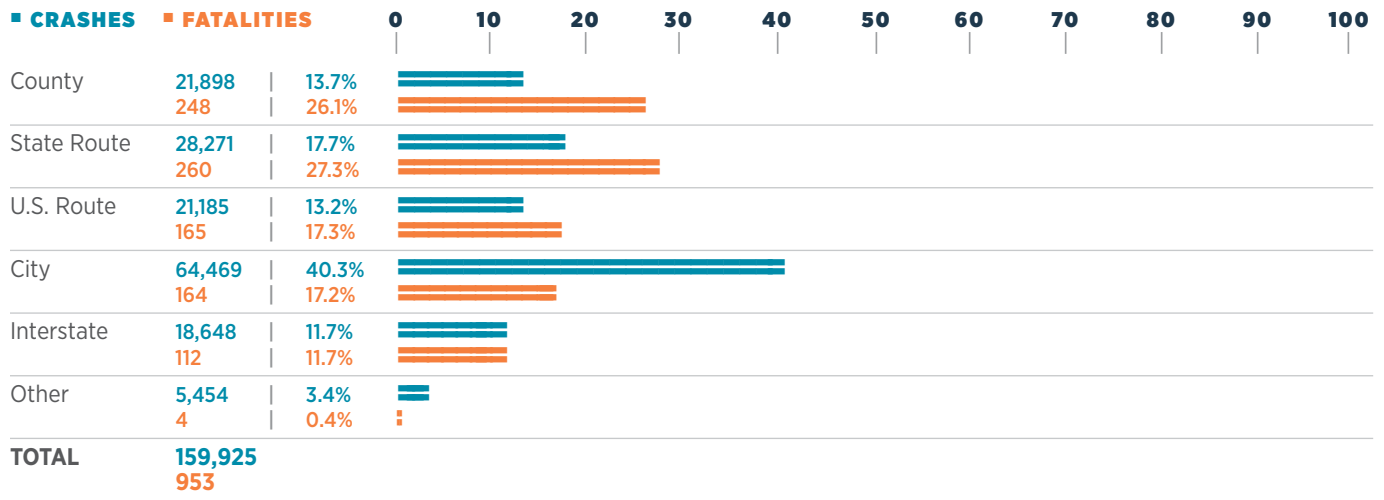
HOLIDAY	YEAR	FATALITIES	PERIOD	0	2	4	6	8	10	12	14	16	18
New Year	2017	15	6 pm, Fri., December 30, 2016 until 11:59 pm, Mon., January 2, 2017 (78 hrs)										
	2018	9	6 pm, Fri., December 29, 2017 until 11:59 pm, Tue., January 2, 2018 (102 hrs)										
Memorial Day	2017	5	6 pm, Fri., May 26, 2017 until 11:59 pm, Mon., May 29, 2017 (78 hrs)										
	2018	11	6 pm, Fri., May 25, 2018 until 11:59 pm, Mon., May 28, 2018 (78 hrs)										
July 4th	2017	9	6 pm, Sat., July 1, 2017 until 11:59 pm, Tue., July 4, 2017 (78 hrs)										
	2018	8	6 pm, Sun., July 1, 2018 until 11:59 pm, Wed., July 4, 2018 (78 hrs)										
Labor Day	2017	5	6 pm, Fri., September 1, 2017 until 11:59 pm, Mon., September 4, 2017 (78 hrs)										
	2018	7	6 pm, Fri., August 31, 2018 until 11:59 pm, Mon., September 3, 2018 (78 hrs)										
Thanksgiving	2017	9	6 pm, Wed., November 22, 2017 until 11:59 pm, Sun., November 26, 2017 (102 hrs)										
	2018	9	6 pm, Wed., November 21, 2018 until 11:59 pm, Sun., November 25, 2018 (102 hrs)										
Christmas	2017	11	6 pm, Fri., December 22, 2017 until 11:59 pm, Tue., December 26, 2017 (102 hrs)										
	2018	9	6 pm, Sat., December 22, 2018 until 11:59 pm, Wed., December 26, 2018 (102 hrs)										

*Note that the hours for each holiday period may vary from one year to the other.

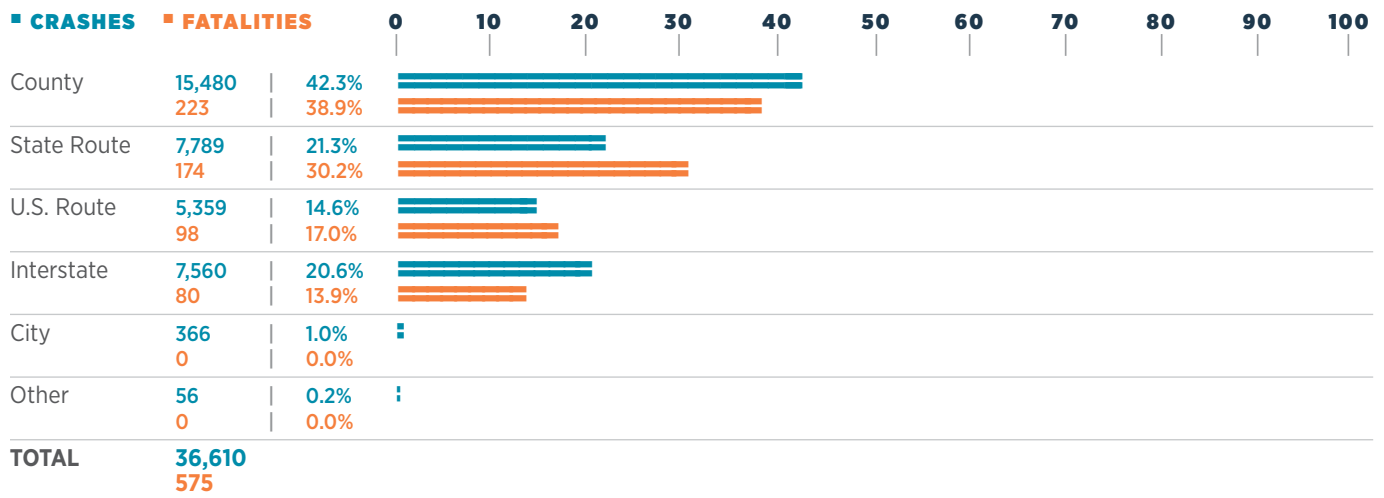


TYPE OF Roadway

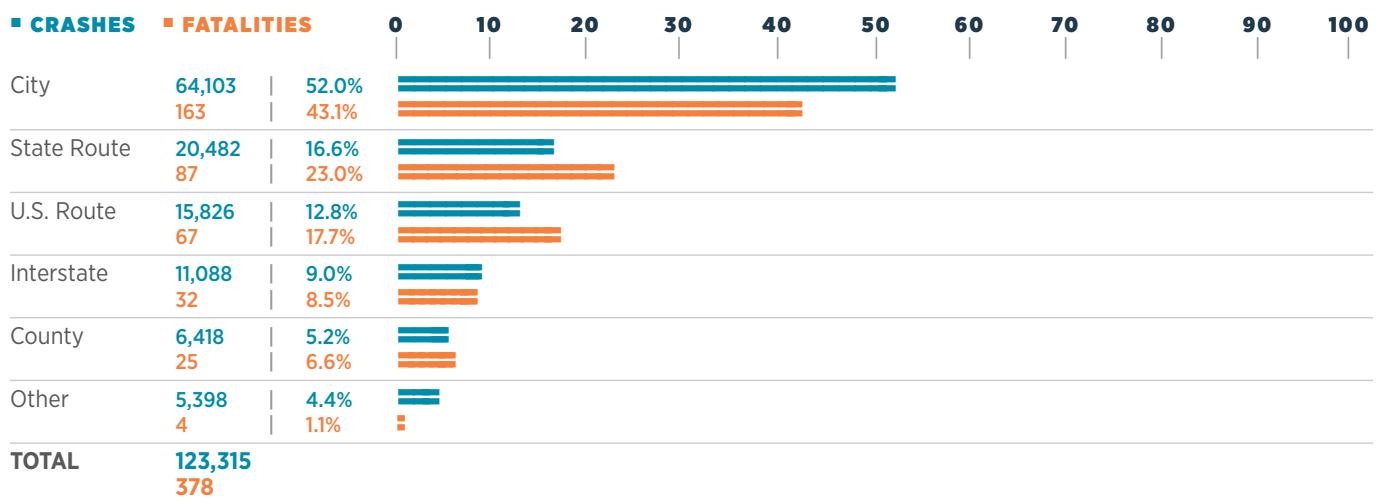
TOTAL FOR STATE



RURAL AREAS



URBAN AREAS



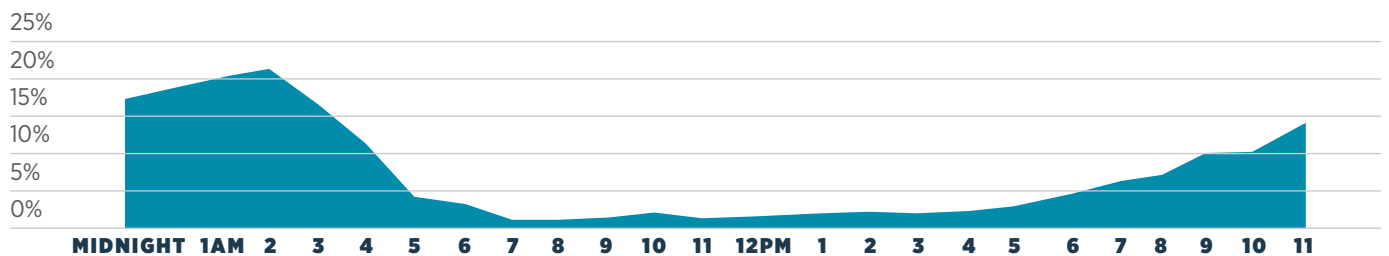
Alcohol and Drug INVOLVEMENT

DRIVERS SUSPECTED OF ALCOHOL OR DRUG IMPAIRMENT

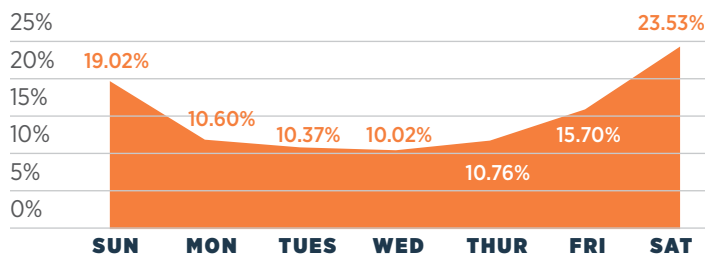
AGE	ALL*	MALE	FEMALE	UNKNOWN	0	100	200	300	400	500	600	700	800	900
0-14	2	2	0	0	:									
15-19	265	210	55	0										
20-24	740	568	172	0										
25-29	792	580	209	3										
30-34	730	547	183	0										
35-39	644	454	190	0										
40-44	488	350	138	0										
45-49	469	341	128	0										
50-54	385	279	105	1										
55-59	389	294	95	0										
60-64	242	193	49	0										
65-69	101	80	21	0										
70-74	52	46	6	0										
75-over	29	20	9	0										
Unknown	149	39	6	104										
TOTAL	5,477	4,003	1,366	108										

*All causal drivers suspected of alcohol or drug impairment.

IMPAIRED DRIVING CRASHES BY TIME



IMPAIRED DRIVING CRASHES BY DAY



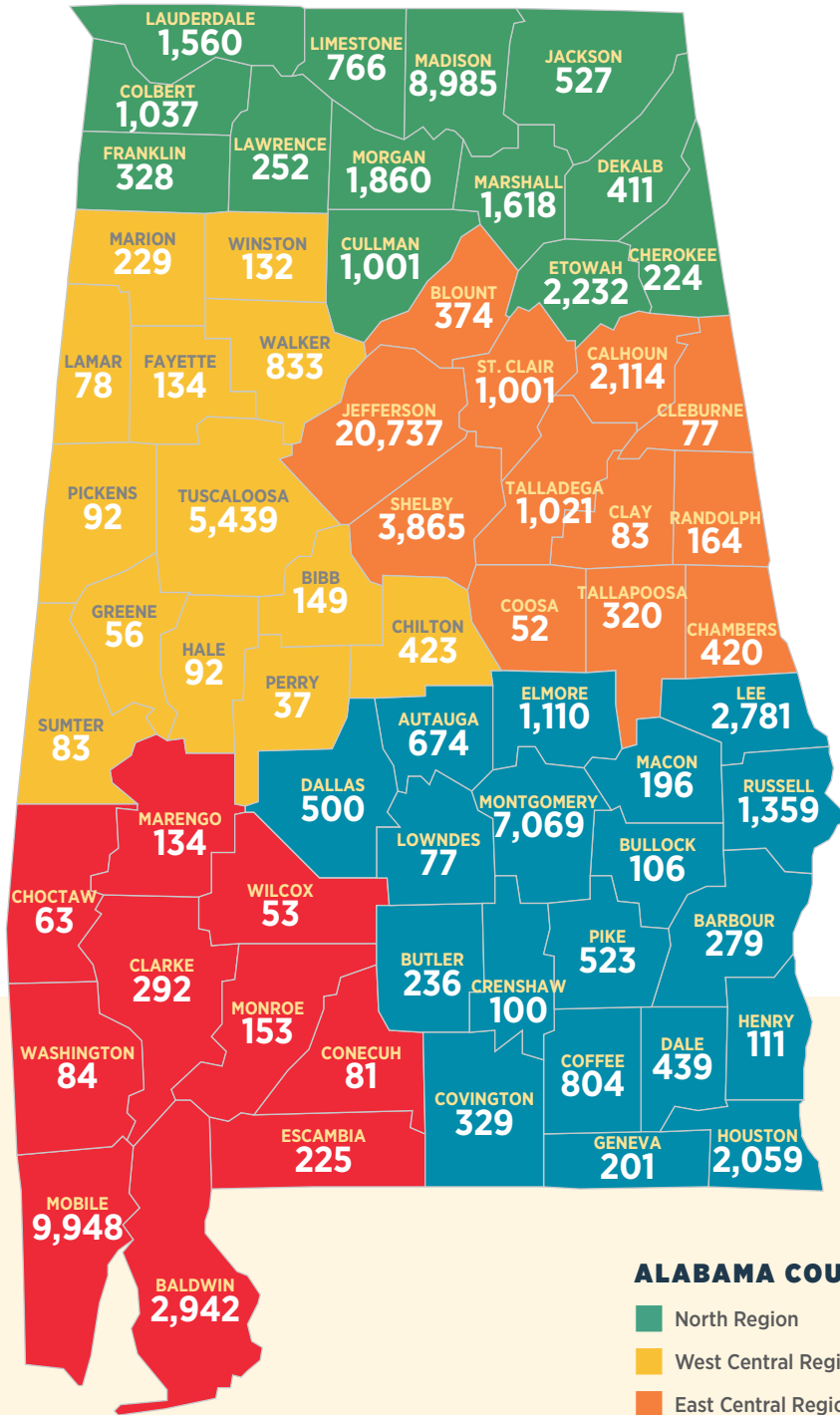
On average, **less than 1 percent of crashes end in a fatality**. However, for impaired driving crashes, the probability is much greater. The proportion of **fatality crashes involving impairment (2.98 percent)** is **6.5 times that of crashes in general (0.46 percent)**, as reported in 2018.

There were **196 people** who died in **5,708 crashes** with **suspected alcohol or drug impairment**.



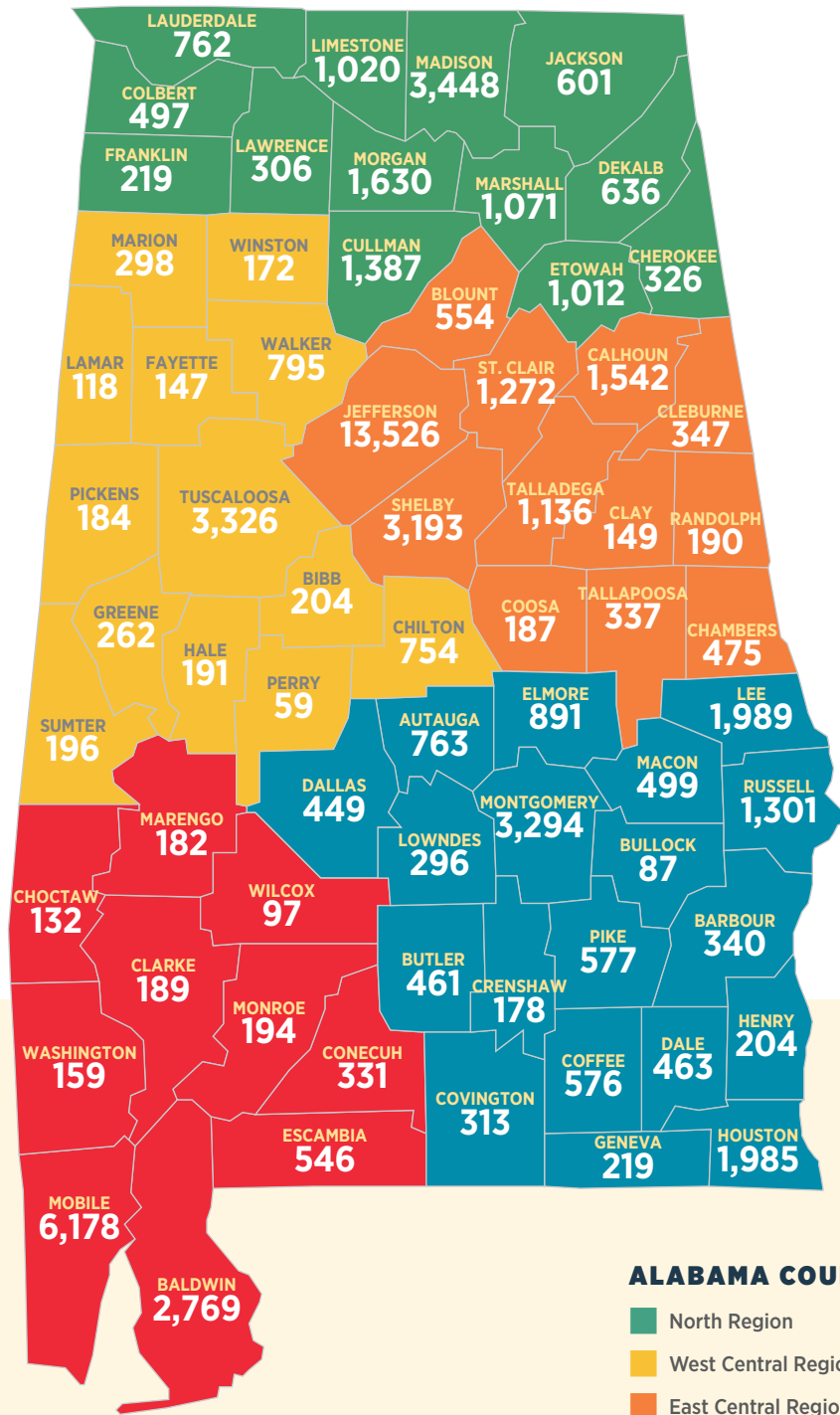
Intersection **CRASHES BY COUNTY**

TOTAL INTERSECTION-RELATED CRASHES 91,734



Non-Intersection **CRASHES BY COUNTY**

TOTAL NON-INTERSECTION-RELATED CRASHES 68,191



ALABAMA COUNTY REGION KEY

- North Region
- West Central Region
- East Central Region
- Southeast Region
- Southwest Region



THE Driver

DRIVER CONTRIBUTING CIRCUMSTANCES WITH PERCENTAGE OF FATAL CRASHES TO ALL CRASHES

CIRCUMSTANCE	ALL CRASHES	FATAL CRASHES	0	0.5%	1%	1.5%	2%	2.5%	3%	3.5%	4%	4.5%	5%
Failed to Yield Right of Way	23,832	96	=====										
Tailgating	22,472	4	=====										
Misjudged Stopping Distance	13,837	5	=====										
Improper Lane Change/Use	13,504	58	=====										
Unseen Object/Person/Vehicle	10,678	33	=====										
Speeding	8,883	139	=====										
Swerved to Avoid Vehicle/Object	7,477	30	=====										
Failure to Heed Sign/Signal/Officer	6,145	24	=====										
Driving Under the Influence	4,119	89	=====										
Ran Off Road	3,680	68	=====										
Fatigued/Asleep	2,781	21	=====										
Wrong Side of Road	793	32	=====										
Driver Not in Control	0	0											
All Other	41,724	273	=====										
TOTAL	159,925	872											

There may be multiple contributing circumstances in each crash. The table above shows the primary cause determined by the officer reporting the crash.

Motorcycle **CRASH STATISTICS**

TEN YEAR DATA

YEAR	MOTORCYCLISTS	INJURIES	FATALITIES	0	500	1,000	1,500	2,000	2,500
2009	1,647	1,205	77						
2010	1,729	1,319	86						
2011	1,925	1,438	97						
2012	1,912	1,477	92						
2013	1,583	1,173	76						
2014	1,650	1,251	64						
2015	1,601	1,254	74						
2016	1,828	1,297	114						
2017	1,918	1,222	79						
2018	1,859	1,262	83						

MOTORCYCLE INVOLVED CRASHES BY AGE INCLUDES MOTOR SCOOTERS AND MOPEDS

AGE	CRASHES	INJURIES	FATALITIES
0-14	12	7	0
15-19	95	62	3
20-24	232	165	4
25-29	228	165	13
30-34	177	126	6
35-39	189	131	13
40-44	164	118	9
45-49	172	115	11
50-54	143	97	9
55-59	153	107	4
60-64	107	70	4
65-69	73	49	1
70-74	44	26	5
75-over	21	13	1
Unknown	49	11	0
TOTAL	1,859	1,262	83

74% of all fatal motorcycle crashes were caused by the motorcyclist.



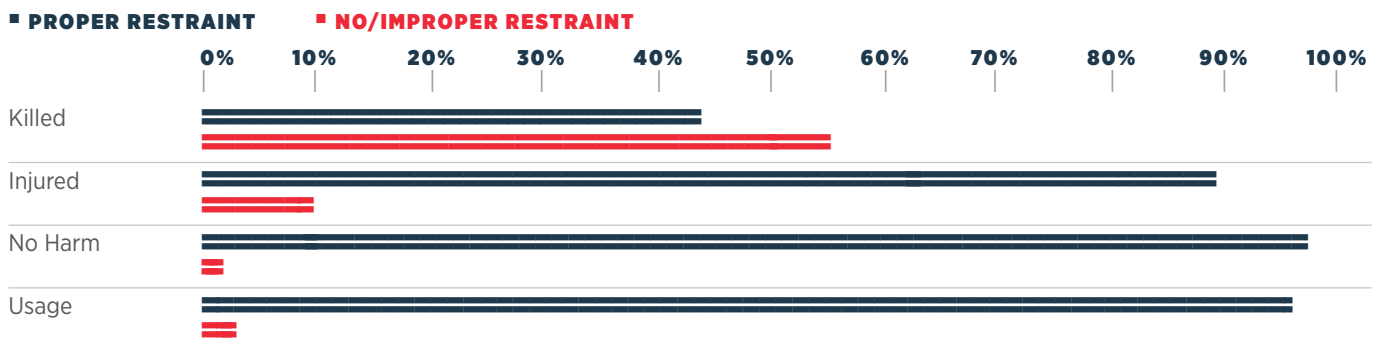
Safety Restraint USAGE

SAFETY RESTRAINT USAGE

RESTRAINT USED	SEVERITY		DRIVER		FRONT SEAT PASSENGER		BACK SEAT PASSENGER		TOTALS			
	KILLED	INJURED	NO HARM	SUBTOTAL	KILLED	INJURED	NO HARM	SUBTOTAL	KILLED	INJURED	NO HARM	SUBTOTAL
Wearing Lap and Shoulder Belts	239	27,552	220,920	248,711	52	6,043	34,989	41,084	1	1,899	14,839	16,739
	0.09%	11.08%	88.83%	100.00%	0.13%	14.71%	85.16%	100.00%	0.01%	11.34%	88.65%	100.00%
	292	35,494	270,748	306,534	2	94	675	771	0	76	432	508
	0.09%	11.58%	88.33%	100%	0.13%	13.98%	85.89%	100%	0.06%	6.82%	93.12%	100%
Wearing Lap Belt Only	2	94	675	771	0	42	196	238	0	76	432	508
	0.26%	12.19%	87.55%	100%	0.00%	17.65%	82.35%	100%	0.00%	14.96%	85.04%	100%
	1	102	1,427	1,530	0	9	123	132	0	7	62	69
	0.06%	6.67%	93.27%	100%	0.00%	6.82%	93.18%	100%	0.00%	10.14%	89.86%	100%
Wearing Shoulder Belt Only	1	102	1,427	1,530	0	9	123	132	0	7	62	69
	0.06%	6.67%	93.27%	100%	0.00%	6.82%	93.18%	100%	0.00%	10.14%	89.86%	100%
	297	2,631	2,571	5,499	38	662	511	1,211	27	424	576	1,027
	5.40%	47.85%	46.75%	100%	3.14%	54.66%	42.20%	100%	2.63%	41.28%	56.09%	100%
None Used	297	2,631	2,571	5,499	38	662	511	1,211	27	424	576	1,027
	5.40%	47.85%	46.75%	100%	3.14%	54.66%	42.20%	100%	2.63%	41.28%	56.09%	100%
	47	1,749	11,127	12,923	9	401	1,168	1,578	4	221	595	820
	0.37%	13.53%	86.10%	100%	0.57%	25.41%	74.02%	100%	0.49%	26.95%	72.56%	100%
Unknown	47	1,749	11,127	12,923	9	401	1,168	1,578	4	221	595	820
	0.37%	13.53%	86.10%	100%	0.57%	25.41%	74.02%	100%	0.49%	26.95%	72.56%	100%

*Seat belt use for non-fatal injured passengers may be over-estimated because reporting officers have no way to make a direct observation. Additionally, 60 fatalities had unknown restraint use.

PERCENTAGE OF OCCUPANTS INVOLVED IN CRASHES



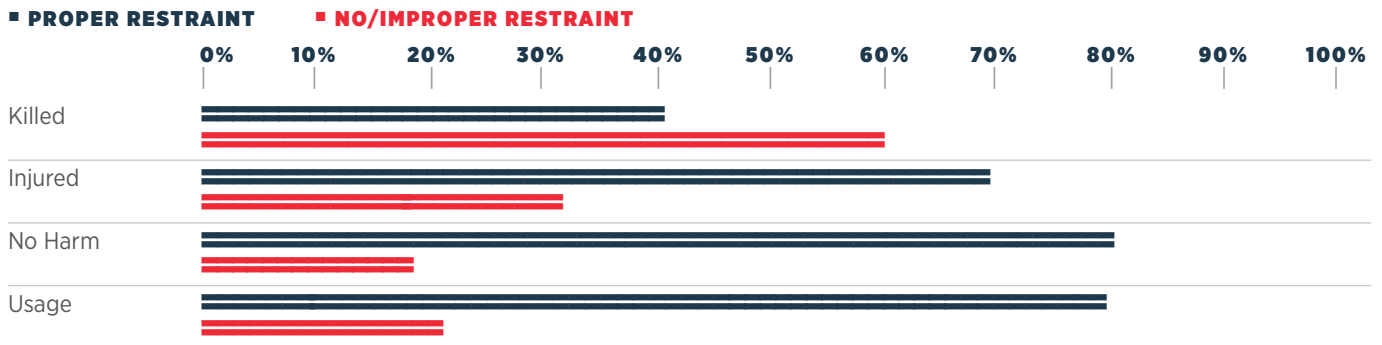
According to the crash reports, overall only **3.5 percent of people involved in crashes were not using safety restraints**; however, **almost 56 percent of all fatalities were not restrained.**

In contrast, **97.6 percent of people involved in crashes but not harmed** were reported to have been **wearing their seat belts.**

CHILD RESTRAINT USAGE (UNDER 6 YEARS OLD)

RESTRAINT USED	SEVERITY	FRONT SEAT PASSENGER		BACK SEAT PASSENGER		TOTALS	
		Count	Percentage	Count	Percentage	Count	Percentage
Child Restraint Used	KILLED	0	0.00%	4	0.05%	4	0.04%
	INJURED	32	11.76%	662	7.62%	694	7.75%
	NO HARM	240	88.24%	8,018	92.33%	8,258	92.21%
	SUBTOTAL	272	100%	8,684	100%	8,956	100%
Child Restraint Used Improperly	KILLED	1	0.48%	3	0.16%	4	0.19%
	INJURED	30	14.35%	220	11.84%	250	12.10%
	NO HARM	178	85.17%	1,635	88.00%	1,813	87.71%
	SUBTOTAL	209	100%	1,858	100%	2,067	100%
None Used	KILLED	1	4.76%	1	0.77%	2	1.32%
	INJURED	10	47.62%	51	39.23%	61	40.40%
	NO HARM	10	47.62%	78	60.00%	88	58.28%
	SUBTOTAL	21	100%	130	100%	151	100%
Unknown	KILLED	0	0.00%	2	0.80%	2	0.74%
	INJURED	4	22.22%	44	17.53%	48	17.85%
	NO HARM	14	77.78%	205	81.67%	219	81.41%
	SUBTOTAL	18	100%	251	100%	269	100%

PERCENTAGE OF CHILD PASSENGERS INVOLVED IN CRASHES



According to the crash reports, overall, **almost 20 percent of children involved in crashes were not in a child restraint or were improperly restrained.**

About 80 percent of children involved in crashes but not harmed were reported to have been **protected by child restraints.**



Bicycle CRASH STATISTICS

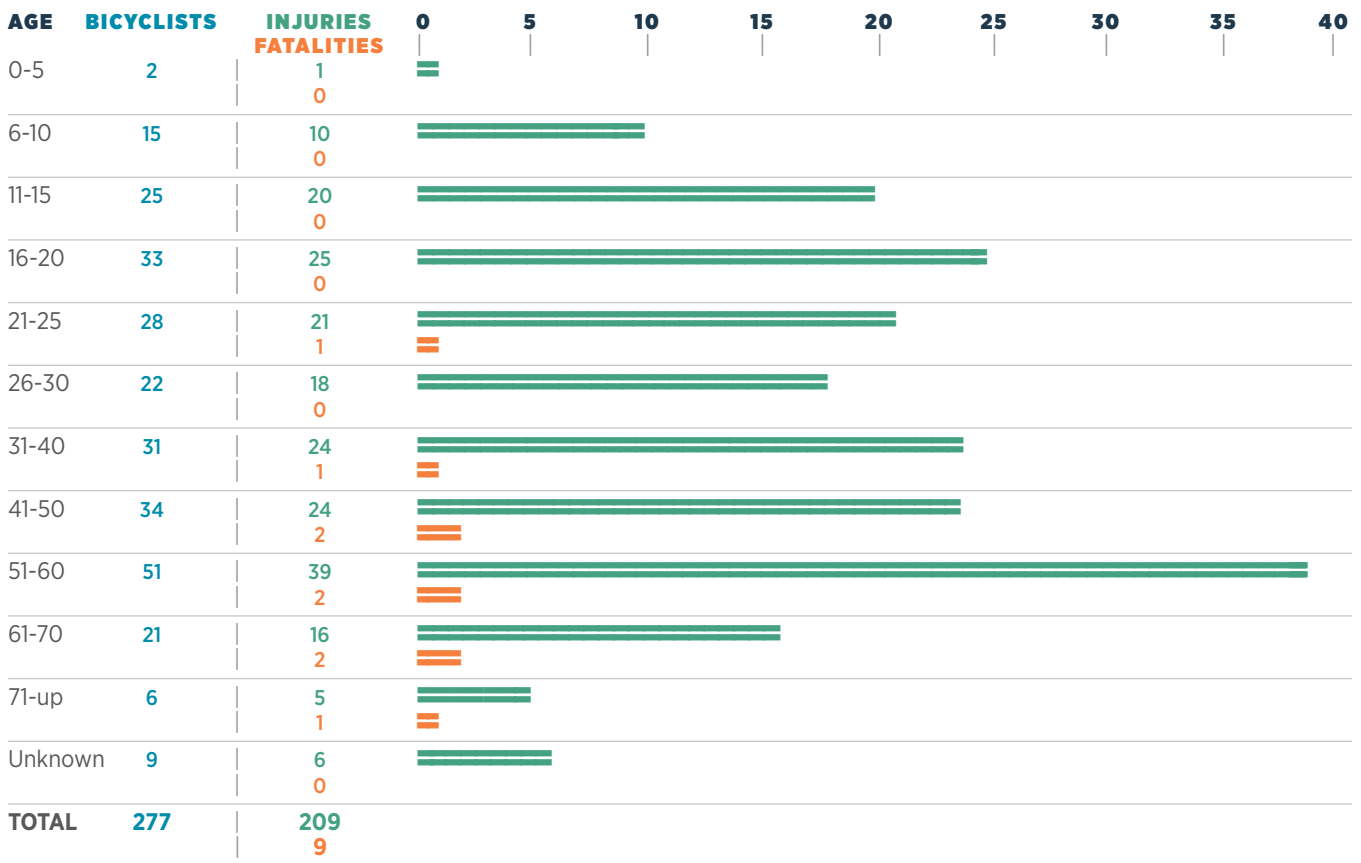
TEN YEAR DATA

YEAR	BICYCLISTS	INJURIES	FATALITIES
2009	208	167	6
2010	232	169	5
2011	280	203	5
2012	278	225	9
2013	264	192	6
2014	203	195	8
2015	260	185	9
2016	290	214	4
2017	299	212	6
2018	277	209	9

In 2018, almost half of all bicycle crashes were caused by the bicyclist.

14% of all bicycle crashes occur on rural routes, and 86% of all bicycle crashes occur in urban streets.

BICYCLISTS INVOLVED IN CRASHES BY AGE



Pedestrian CRASH STATISTICS

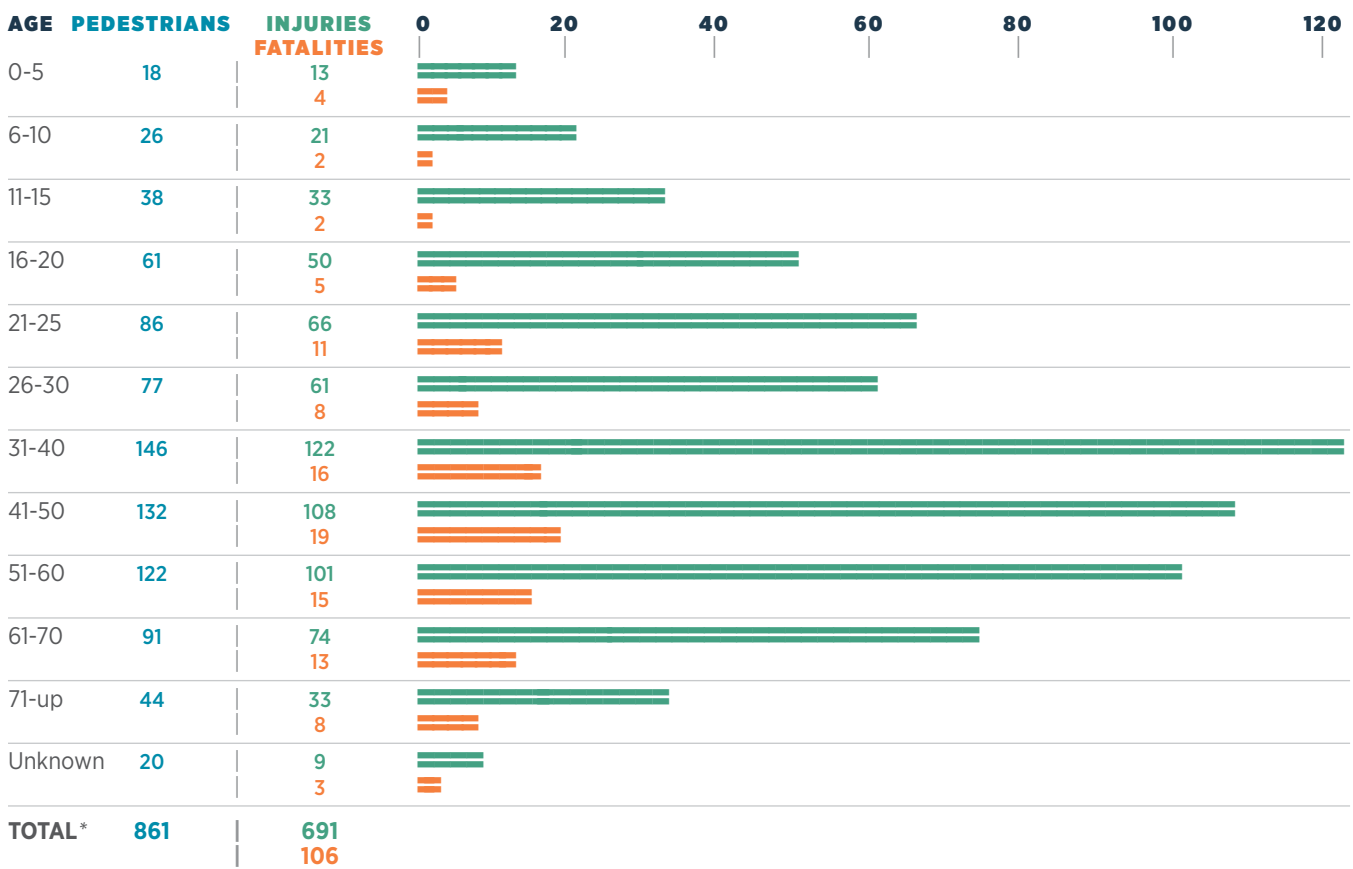
TEN YEAR DATA

YEAR	PEDESTRIANS	INJURIES	FATALITIES
2009	604	511	65
2010	724	578	63
2011	741	589	84
2012	798	651	80
2013	757	639	57
2014	818	623	95
2015	834	656	96
2016	932	724	122
2017	882	706	113
2018	861	691	106

In 2018, **71 percent** of all fatal pedestrian crashes were caused by the pedestrian.

Pedestrian fatalities have **increased 63.1 percent** since 2009, which traffic safety professionals attribute largely to **distracted walking** with **electronic devices**.

PEDESTRIANS INVOLVED BY AGE AND SEVERITY



*Total number of pedestrians involved.



Train INVOLVED CRASH STATISTICS

TEN YEAR DATA



RAILROAD CRASHES

INJURY SEVERITY	PERSONS
Uninjured	26
Injured	39
Died	12
Unknown	4
TOTAL	81

THE NUMBER OF RAILROAD
fatalities AND injuries
increased
 IN 2018.

Driver behavior issues include ignoring flashing lights or other active warning devices, passing through barrier gates, and driving around already lowered gates/failure to observe passive warning devices.

According to NHTSA, **a motorist is almost 20 times more likely to die in a crash involving a train** than in a collision involving another motor vehicle.

Work Zone CRASH STATISTICS

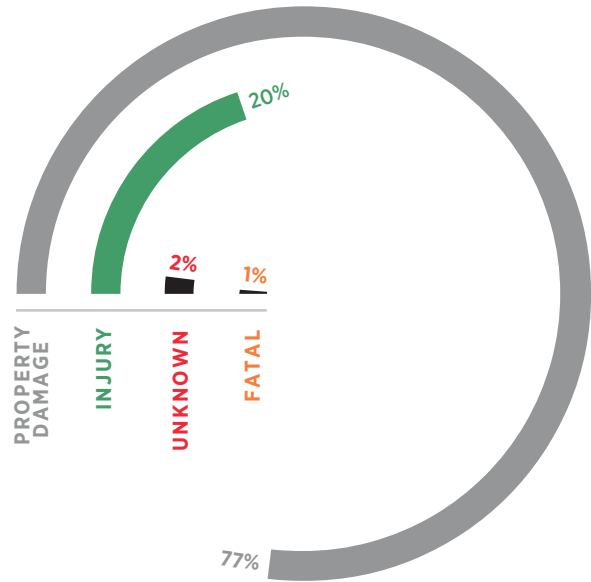
TEN YEAR DATA

YEAR	INJURY CRASHES	FATAL CRASHES
2009	518	9
2010	621	19
2011	585	19
2012	477	23
2013	541	22
2014	504	21
2015	492	31
2016	652	18
2017	640	25
2018	769	28

WORK ZONE CRASHES

CRASH SEVERITY	CRASHES
Property Damage	2,944
Injury	769
Fatal	28
Unknown	65
TOTAL	3,806

WORK ZONE CRASHES



Drivers need to be particularly alert when traveling through highway work zones. When a road is not in its usual condition due to construction, it is essential to slow down. Fines for speeding double in work zones when construction workers are present. Work zone crashes are dangerous to both highway workers and motorists. **Most work zone crashes are rear-end collisions, resulting from speeding or inattentive driving.**

ALDOT PROMOTES WORK ZONE AWARENESS IN APRIL OF EACH YEAR. ALABAMA'S THEME FOR

Work Zone Awareness

IN 2018 WAS

Work Zone Safety: Everybody's Responsibility



Truck CRASH STATISTICS

TEN YEAR DATA

YEAR	TRUCKS INVOLVED	INJURIES	FATALITIES
2009	6,704	1,615	84
2010	7,898	2,002	113
2011	6,927	1,715	92
2012	5,798	1,562	90
2013	7,322	1,982	116
2014	7,782	2,184	89
2015	8,484	2,367	118
2016	8,937	2,345	157
2017	9,351	2,563	101
2018	10,079	2,629	121

PRIMARY CAUSE OF ALL CRASHES WITH TRUCK INVOLVEMENT*

PRIMARY CAUSE	CRASHES	
Improper Lane Change or Use	1,351	13.4%
Failed to Yield Right of Way	923	9.2%
Unseen Object, Person, or Vehicle	889	8.8%
Tailgating	809	8.0%
Misjudged Stopping Distance	506	5.0%
Defective Equipment	431	4.3%
Improper Backing	382	3.8%
Avoiding Animal, Object, or Person	370	3.7%
Improper Turn	330	3.3%
Driving too Fast for Conditions	311	3.1%
Crossed Median/Centerline	283	2.8%
Failure to Heed Sign/Signal	277	2.7%
Improper Passing	216	2.1%
Fatigued/Asleep	210	2.1%
Ran Off Road	148	1.5%
Driving Under the Influence	119	1.2%
Over the Speed Limit	73	0.7%
Unknown	497	4.9%
All Other	1,954	19.4%
TOTAL	10,079	100%

*There is no inference as to whether the truck or another type of vehicle was the cause of the crash.

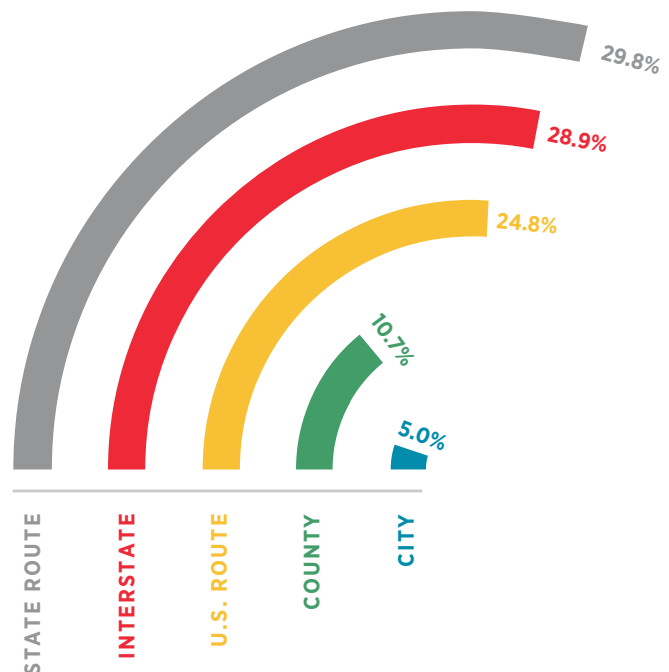
Truck Definition

A truck is defined as any vehicle heavier than a light truck or SUV, including delivery truck, 18 wheeler, tow truck, dually, or work truck. Truck does not include a bus of any type.

TOTAL FOR ALL CRASHES WITH TRUCK INVOLVEMENT

ROAD TYPE	CRASHES		FATALITIES	
State Route	1,782	17.7%	36	29.8%
Interstate	3,051	30.3%	35	28.9%
U.S. Route	1,551	15.4%	30	24.8%
County	898	8.9%	13	10.7%
City	2,439	24.2%	6	5.0%
Other	358	3.5%	1	0.8%
TOTAL	10,079	100%	121	100%

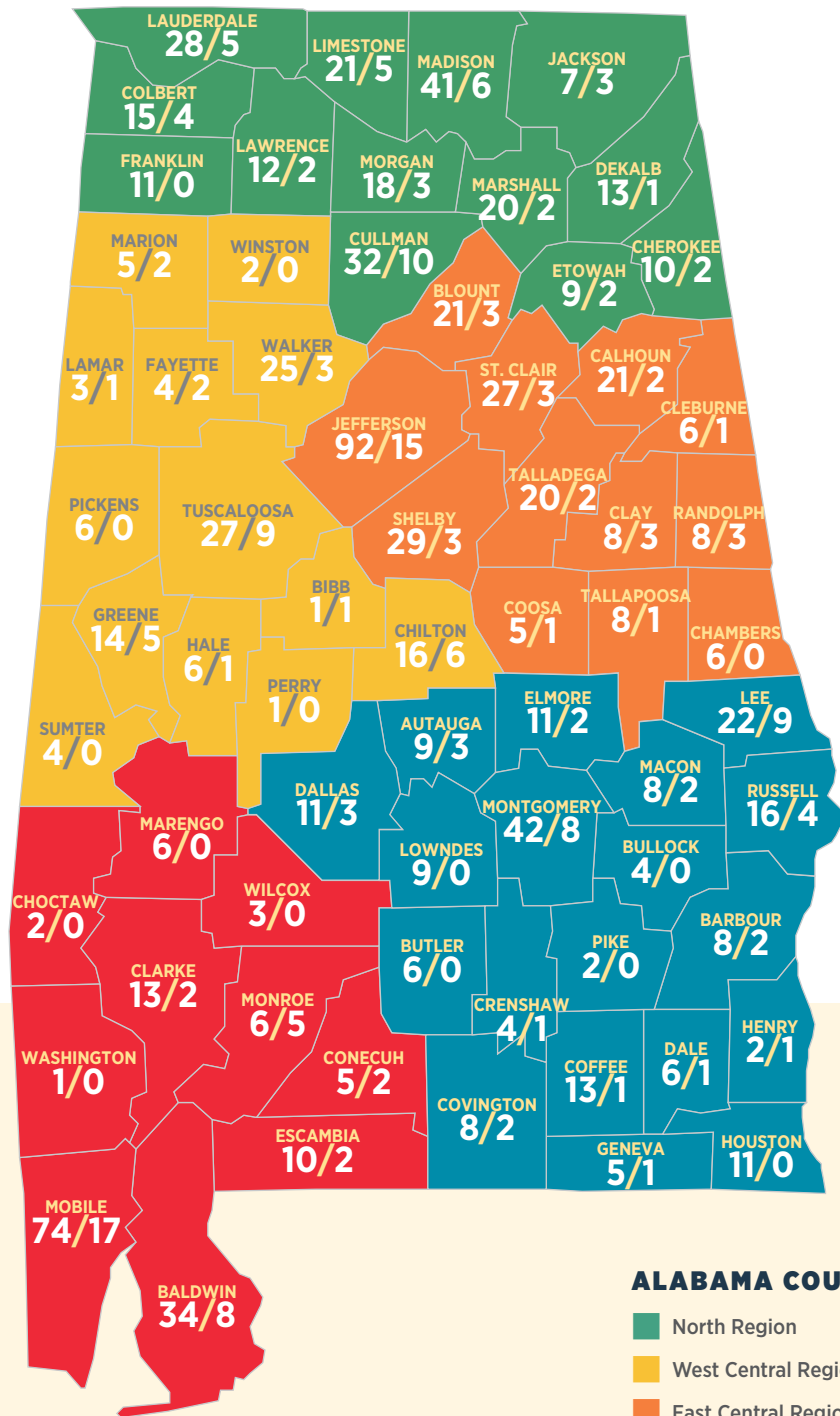
TRUCK INVOLVED FATALITIES BY ROAD TYPE



Fatalities **BY COUNTY**

TOTAL TRAFFIC FATALITIES 953 (First Figure)

TRAFFIC FATALITIES WITH APPARENT ALCOHOL OR DRUG INVOLVEMENT 188 (Second Figure)



ALABAMA COUNTY REGION KEY

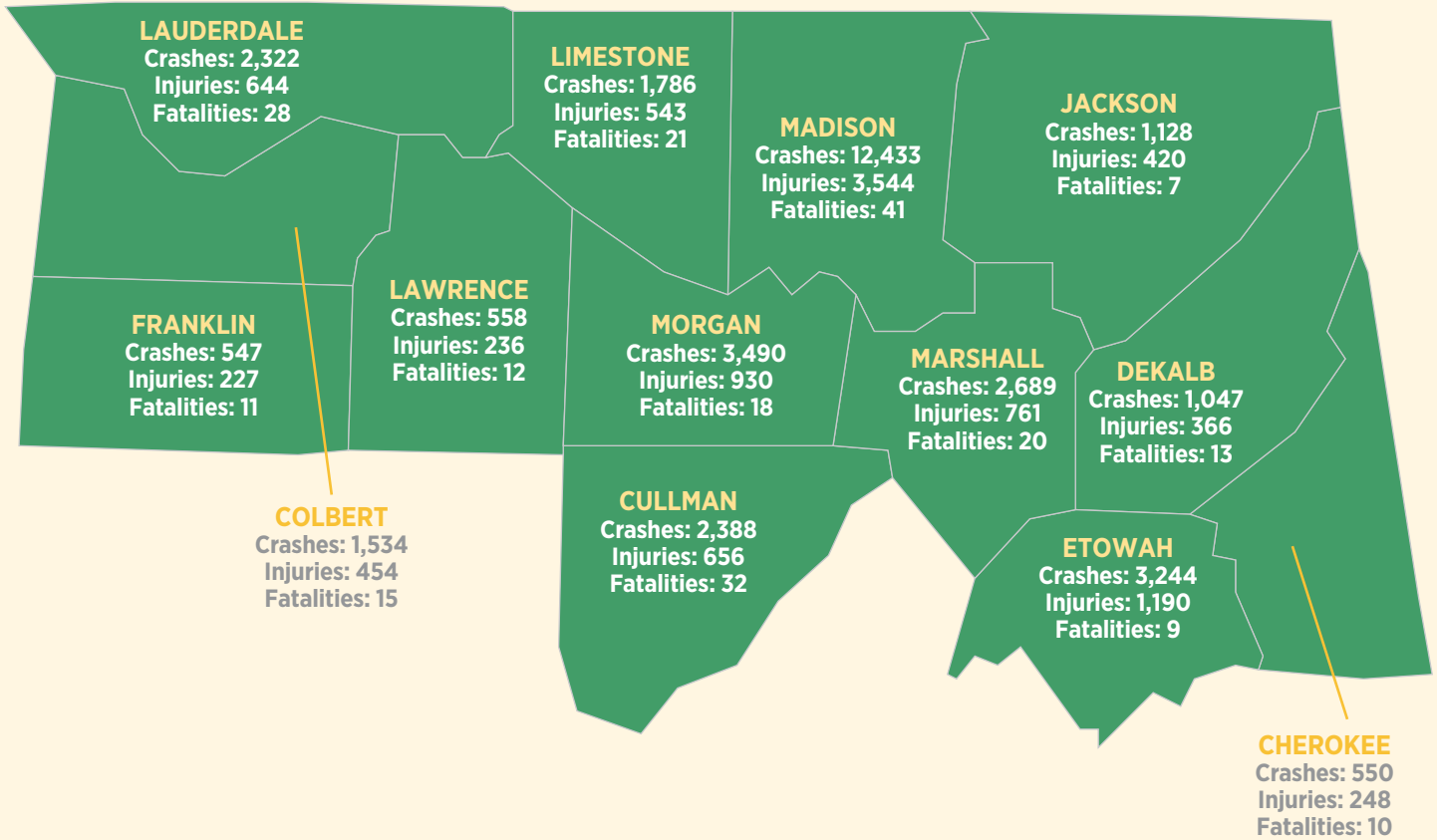
- North Region
- West Central Region
- East Central Region
- Southeast Region
- Southwest Region





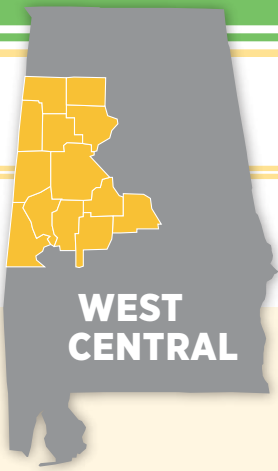
2018 Crashes by County

NORTH REGION STATISTICS



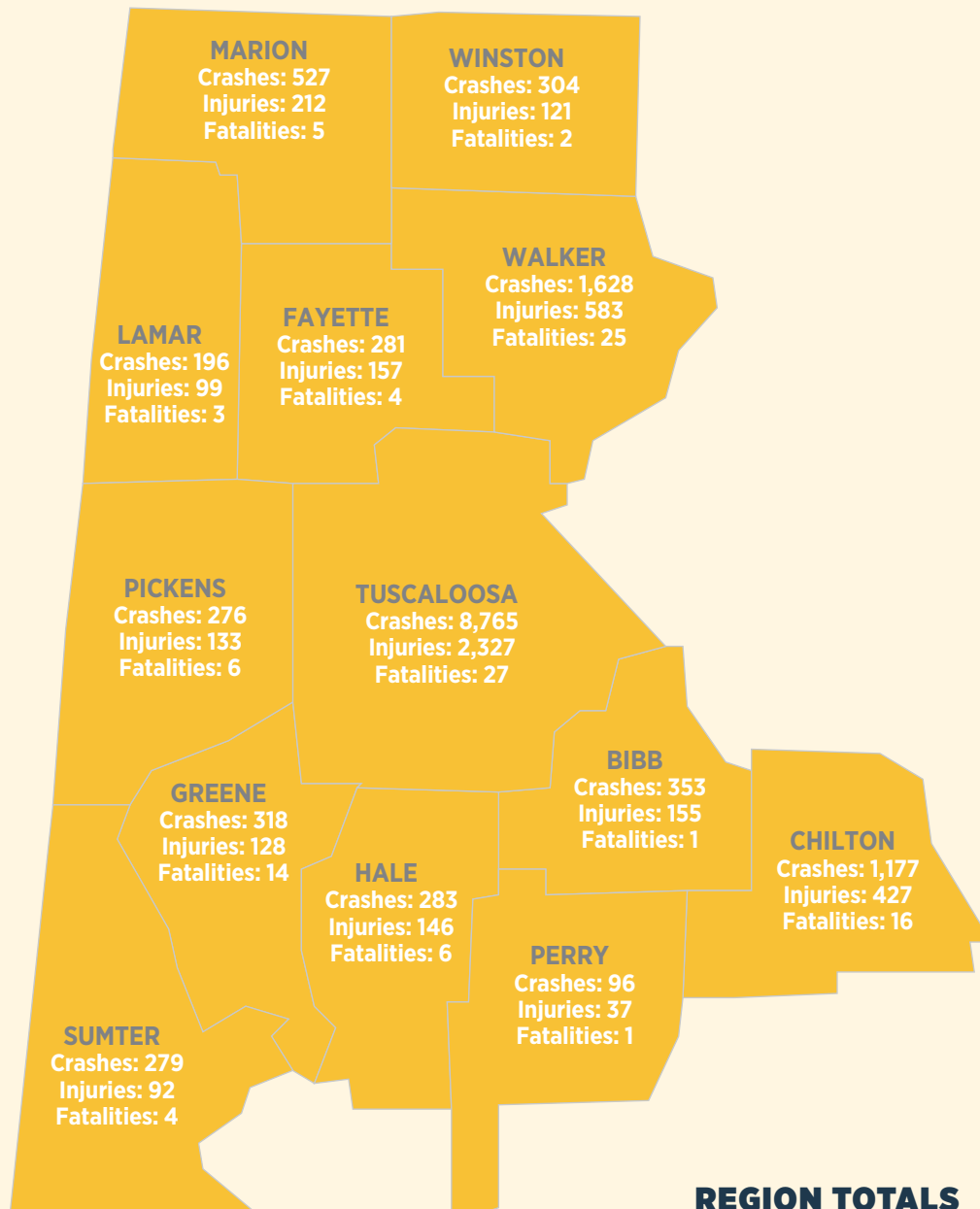
REGION TOTALS

TOTAL CRASHES	33,716
TOTAL INJURIES	10,219
TOTAL FATALITIES	237



2018 Crashes by County

WEST CENTRAL REGION STATISTICS



REGION TOTALS

TOTAL CRASHES 14,483

TOTAL INJURIES 4,617

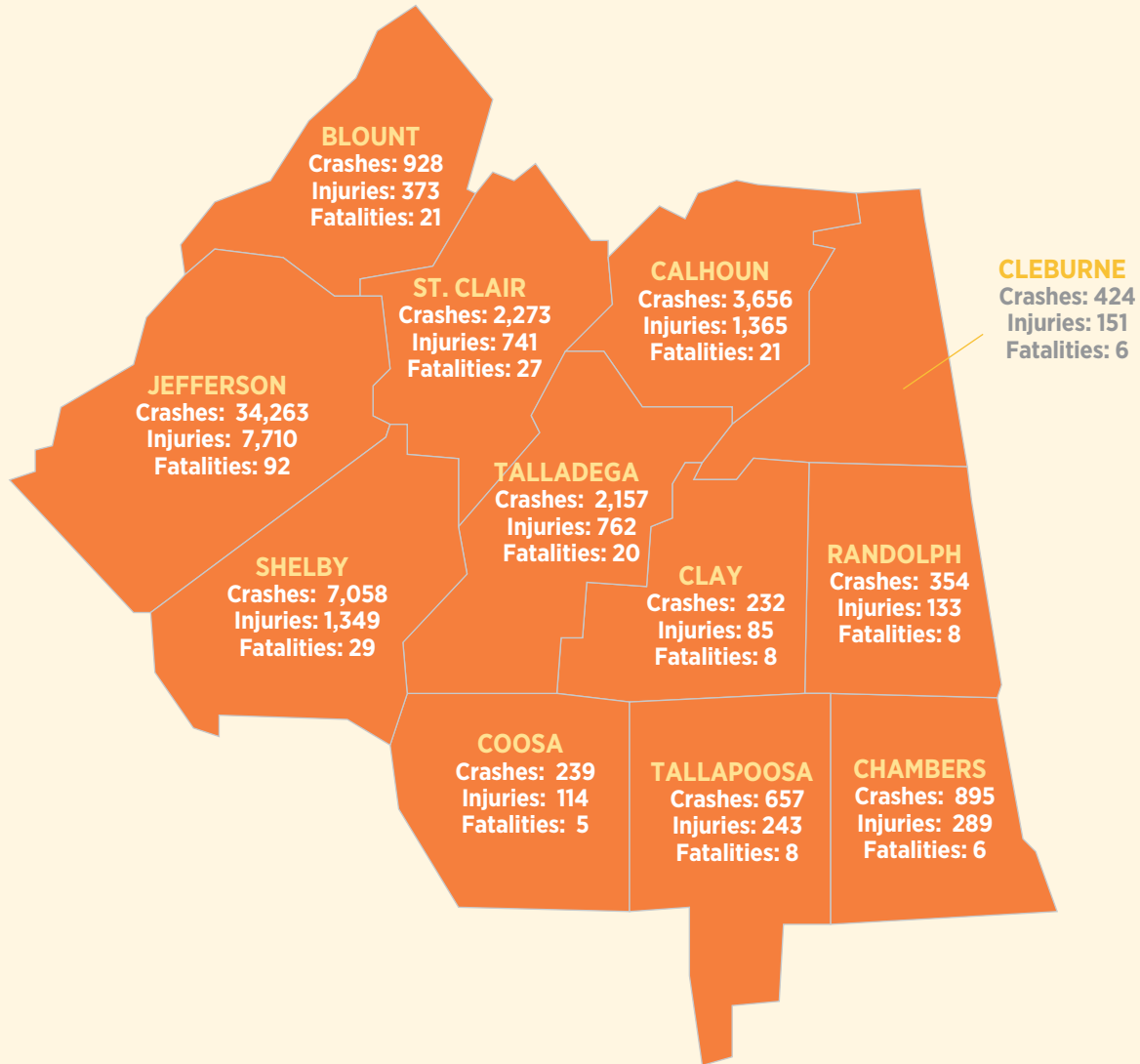
TOTAL FATALITIES 114





2018 Crashes by County

EAST CENTRAL REGION STATISTICS



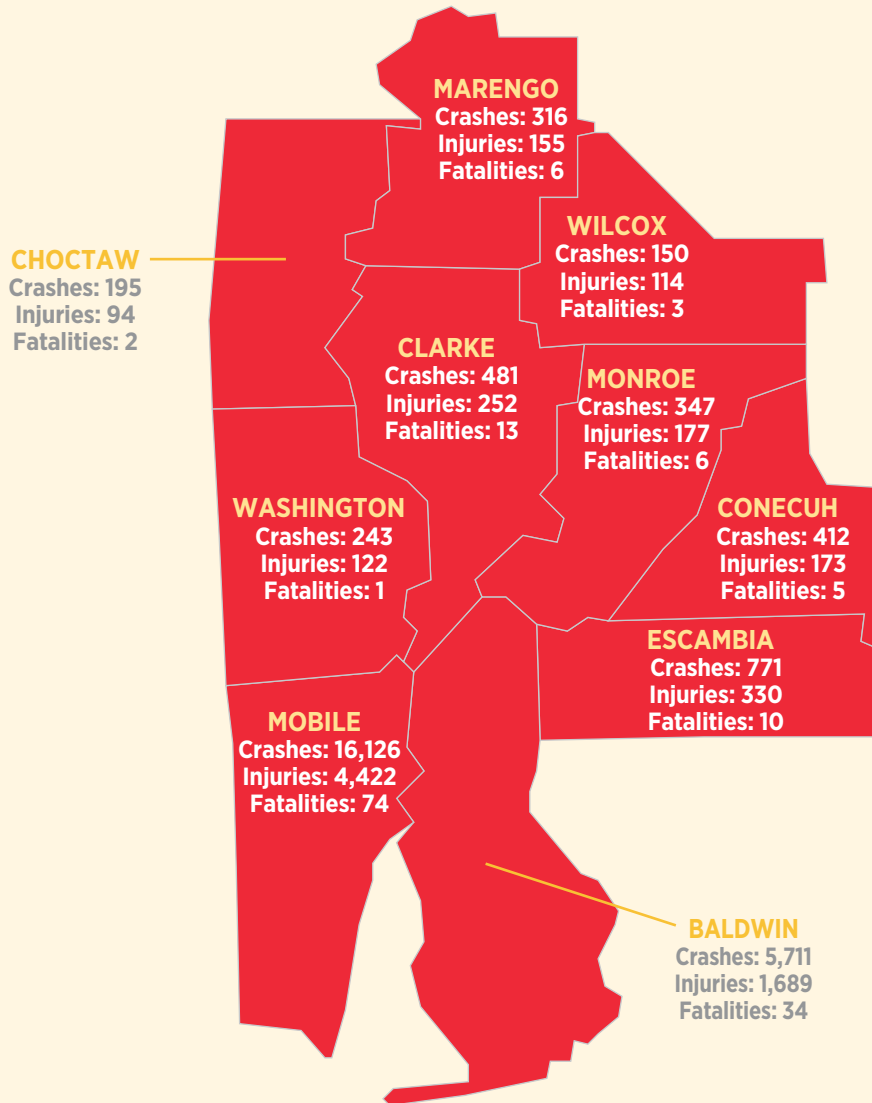
REGION TOTALS

TOTAL CRASHES	53,136
TOTAL INJURIES	13,315
TOTAL FATALITIES	251

2018 Crashes by County



SOUTHWEST REGION STATISTICS



REGION TOTALS

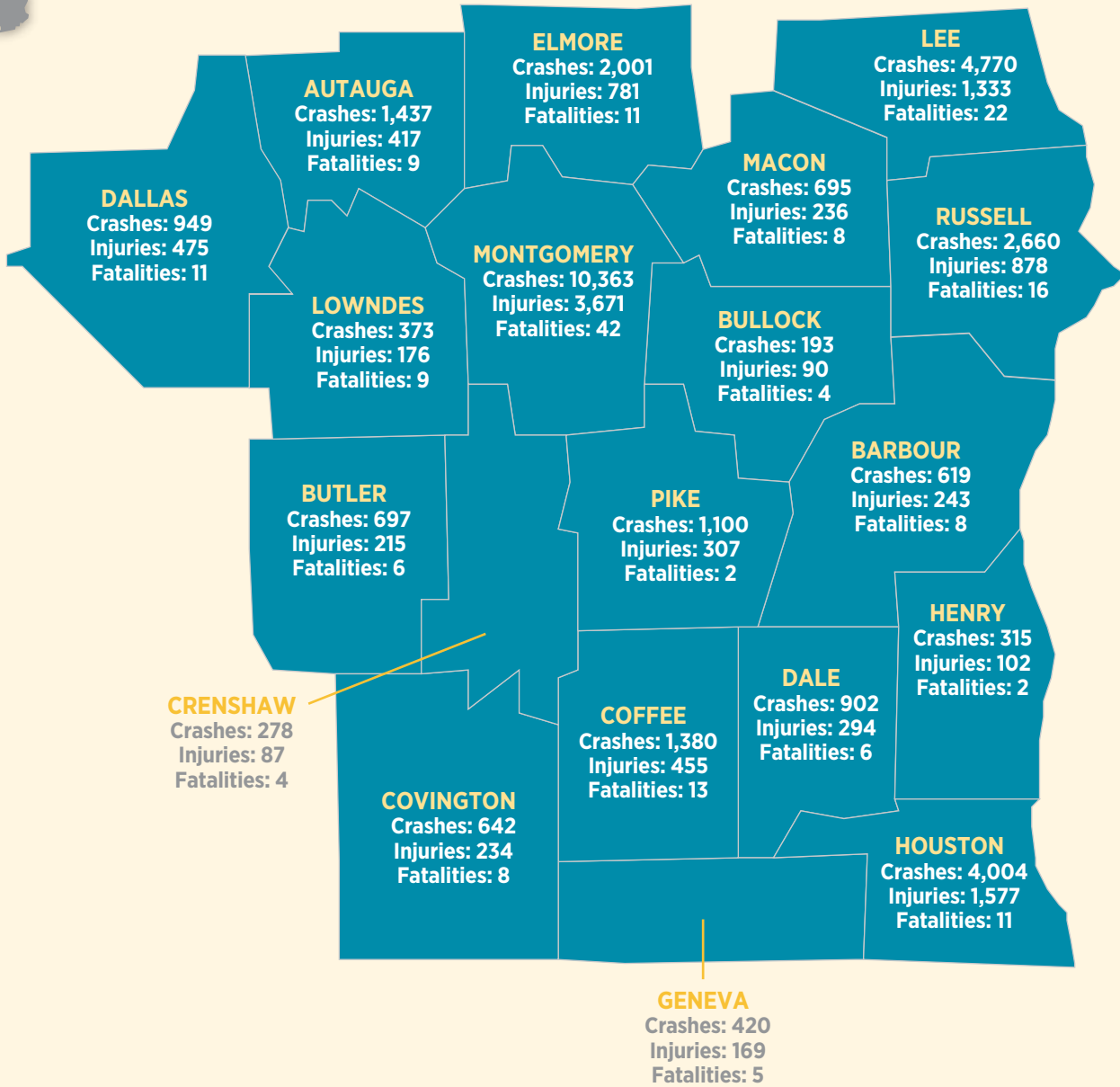
TOTAL CRASHES	24,752
TOTAL INJURIES	7,528
TOTAL FATALITIES	154



**SOUTH
EAST**

2018 Crashes by County

SOUTHEAST REGION STATISTICS



REGION TOTALS

TOTAL CRASHES	33,838
TOTAL INJURIES	11,740
TOTAL FATALITIES	197

COMPARATIVE County Statistics

2017 VS. 2018

COUNTY	TOTAL CRASHES FOR COUNTY						URBAN AREAS OF COUNTY						RURAL AREAS OF COUNTY					
	NUMBER OF CRASHES		PERSONS KILLED		PERSONS INJURED		NUMBER OF CRASHES		PERSONS KILLED		PERSONS INJURED		NUMBER OF CRASHES		PERSONS KILLED		PERSONS INJURED	
	2017	2018	2017	2018	2017	2018	2017	2018	2017	2018	2017	2018	2017	2018	2017	2018	2017	2018
Jefferson	33,291	34,263	83	92	7,678	7,710	29,556	30,141	69	65	6,777	6,650	3,735	4,122	14	27	901	1,060
Mobile	16,083	16,126	75	74	4,802	4,422	14,025	13,918	37	43	4,014	3,615	2,058	2,208	38	31	788	807
Montgomery	10,205	10,363	19	42	3,691	3,671	9,407	9,462	14	28	3,392	3,299	798	901	5	14	299	372
Autauga	1,361	1,437	14	9	423	417	880	926	2	2	266	241	481	511	12	7	157	176
Baldwin	5,535	5,711	26	34	1,603	1,689	4,121	4,304	12	11	1,050	1,088	1,414	1,407	14	23	553	601
Barbour	555	619	6	8	236	243	425	448	3	2	172	152	130	171	3	6	64	91
Bibb	355	353	8	1	160	155	167	177	2	0	69	73	188	176	6	1	91	82
Blount	917	928	23	21	378	373	371	374	1	2	108	112	546	554	22	19	270	261
Bullock	190	193	6	4	99	90	116	95	3	0	48	34	74	98	3	4	51	56
Butler	716	697	14	6	255	215	343	314	1	1	107	78	373	383	13	5	148	137
Calhoun	3,788	3,656	21	21	1,408	1,365	2,695	2,554	7	5	908	876	1,093	1,102	14	16	500	489
Chambers	893	895	5	6	276	289	681	732	4	2	191	206	212	163	1	4	85	83
Cherokee	514	550	10	10	220	248	227	226	5	4	90	91	287	324	5	6	130	157
Chilton	1,087	1,177	11	16	406	427	508	531	4	3	145	170	579	646	7	13	261	257
Choctaw	202	195	6	2	94	94	72	78	2	0	22	30	130	117	4	2	72	64
Clarke	460	481	5	13	207	252	336	363	4	5	135	138	124	118	1	8	72	114
Clay	199	232	1	8	82	85	95	119	0	3	28	29	104	113	1	5	54	56
Cleburne	429	424	3	6	147	151	80	85	0	1	28	28	349	339	3	5	119	123
Coffee	1,262	1,380	7	13	426	455	975	1,015	1	1	277	269	287	365	6	12	149	186
Colbert	1,670	1,534	20	15	510	454	1,265	1,181	4	8	290	271	405	353	16	7	220	183
Conecuh	383	412	5	5	161	173	123	125	0	1	56	55	260	287	5	4	105	118
Coosa	256	239	6	5	106	114	39	30	0	0	13	18	217	209	6	5	93	96
Covington	696	642	12	8	296	234	443	410	6	3	166	130	253	232	6	5	130	104
Crenshaw	257	278	3	4	97	87	87	102	0	0	24	24	170	176	3	4	73	63
Cullman	2,478	2,388	24	32	756	656	1,313	1,313	5	11	334	333	1,165	1,075	19	21	422	323
Dale	887	902	11	6	291	294	634	630	9	2	167	175	253	272	2	4	124	119
Dallas	973	949	11	11	460	475	572	564	3	3	234	251	401	385	8	8	226	224
Dekalb	1,054	1,047	22	13	382	366	636	612	10	7	218	176	418	435	12	6	164	190
Elmore	2,012	2,001	6	11	728	781	1,383	1,355	1	4	507	557	629	646	5	7	221	224
Escambia	861	771	13	10	330	330	443	281	1	1	123	85	418	490	12	9	207	245
Etowah	3,289	3,244	25	9	1,189	1,190	2,794	2,764	16	5	959	976	495	480	9	4	230	214
Fayette	280	281	8	4	116	157	145	149	1	1	42	55	135	132	7	3	74	102
Franklin	568	547	8	11	258	227	311	339	2	5	129	115	257	208	6	6	129	112
Geneva	419	420	9	5	184	169	188	212	1	2	85	80	231	208	8	3	99	89
Greene	310	318	6	14	118	128	50	51	1	0	19	25	260	267	5	14	99	103
Hale	305	283	6	6	153	146	134	140	0	0	51	59	171	143	6	6	102	87
Henry	278	315	5	2	111	102	158	161	1	0	59	51	120	154	4	2	52	51
Houston	3,890	4,044	15	11	1,494	1,577	3,408	3,580	12	6	1,288	1,370	482	464	3	5	206	207
Jackson	1,121	1,128	17	7	443	420	781	797	10	1	279	253	340	331	7	6	164	167



COMPARATIVE County Statistics

2017 VS. 2018 (continued)

COUNTY	TOTAL CRASHES FOR COUNTY						URBAN AREAS OF COUNTY						RURAL AREAS OF COUNTY					
	NUMBER OF CRASHES		PERSONS KILLED		PERSONS INJURED		NUMBER OF CRASHES		PERSONS KILLED		PERSONS INJURED		NUMBER OF CRASHES		PERSONS KILLED		PERSONS INJURED	
	2017	2018	2017	2018	2017	2018	2017	2018	2017	2018	2017	2018	2017	2018	2017	2018	2017	2018
Lamar	192	196	4	3	93	99	100	95	1	0	48	51	92	101	3	3	45	48
Lauderdale	2,367	2,322	15	28	599	644	1,772	1,717	5	14	381	403	595	605	10	14	218	241
Lawrence	519	558	7	12	261	236	152	143	0	0	63	59	367	415	7	12	198	177
Lee	5,291	4,770	15	22	1,403	1,333	4,460	3,937	6	11	1,083	1,053	831	833	9	11	320	280
Limestone	1,565	1,786	23	21	517	543	633	760	2	5	197	212	932	1,026	21	16	320	331
Lowndes	323	373	12	9	134	176	47	37	3	0	29	21	276	336	9	9	105	155
Macon	722	695	15	8	257	236	223	183	0	0	78	78	499	512	15	8	179	158
Madison	12,142	12,433	37	41	3,556	3,544	10,138	10,347	23	28	2,822	2,854	2,004	2,086	14	13	734	690
Marengo	326	316	6	6	150	155	164	160	2	1	50	66	162	156	4	5	100	89
Marion	557	527	7	5	273	212	342	321	3	1	145	112	215	206	4	4	128	100
Marshall	2,580	2,689	14	20	833	761	1,989	2,097	9	8	494	488	591	592	5	12	339	273
Monroe	312	347	6	6	155	177	159	197	1	1	67	103	153	150	5	5	88	74
Morgan	3,236	3,490	20	18	938	930	2,561	2,673	9	13	633	639	675	817	11	5	305	291
Perry	107	96	2	1	69	37	32	31	0	0	25	14	75	65	2	1	44	23
Pickens	287	276	0	6	121	133	139	118	0	1	46	51	148	158	0	5	75	82
Pike	1,130	1,100	11	2	319	307	797	801	0	0	181	185	333	299	11	2	138	122
Randolph	330	354	5	8	132	133	173	190	1	1	38	43	157	164	4	7	94	90
Russell	2,635	2,660	15	16	962	878	2,137	2,117	3	7	702	615	498	543	12	9	260	263
St. Clair	2,056	2,273	24	27	629	741	1,266	1,369	6	6	353	403	790	904	18	21	276	338
Shelby	6,567	7,058	19	29	1,209	1,349	5,165	5,556	9	13	870	935	1,402	1,502	10	16	339	414
Sumter	285	279	8	4	123	92	87	75	2	1	20	20	198	204	6	3	103	72
Talladega	1,990	2,157	26	20	675	762	1,061	1,223	5	9	321	326	929	934	21	11	354	436
Tallahassee	742	657	5	8	243	243	530	485	2	6	171	174	212	172	3	2	72	69
Tuscaloosa	8,344	8,765	37	27	2,310	2,327	6,536	6,830	17	7	1,717	1,687	1,808	1,935	20	20	593	640
Walker	1,661	1,628	21	25	623	583	958	926	3	5	243	268	703	702	18	20	380	315
Washington	241	243	6	1	164	122	58	54	0	1	32	13	183	189	6	0	132	109
Wilcox	151	150	5	3	111	114	49	68	0	1	36	44	102	82	5	2	75	70
Winston	306	304	8	2	138	121	155	147	1	0	47	42	151	157	7	2	91	79
TOTAL	156,993	159,925	948	953	47,771	47,419	121,870	123,315	367	378	33,762	33,197	35,123	36,610	581	575	14,009	14,222

COMPARATIVE City Statistics

2017 VS. 2018

CITY	NUMBER OF CRASHES		PERSONS KILLED		PERSONS INJURED	
	2017	2018	2017	2018	2017	2018
Abbeville	54	70	0	0	25	22
Adamsville	190	164	0	1	66	62
Addison	16	12	0	0	4	2
Akron	1	0	0	0	2	0
Alabaster	1,200	1,335	2	4	209	269
Albertville	861	914	4	2	191	202
Alexander City	335	266	2	3	86	90
Aliceville	23	12	0	1	11	8
Allgood	4	4	0	1	0	2
Altoona	16	16	0	0	6	7
Andalusia	254	222	1	0	80	52
Anderson	3	3	0	0	1	2
Anniston	1,310	1,218	6	1	461	453
Arab	203	230	1	0	48	50
Ardmore	47	49	1	0	12	4
Argo	61	67	0	1	13	27
Ariton	5	8	0	0	1	4
Arley	0	9	0	0	0	3
Ashford	48	41	0	1	24	25
Ashland	60	71	0	2	22	20
Ashville	139	119	3	0	58	41
Athens	355	377	0	1	100	94
Atmore	149	18	0	1	49	10
Attalla	280	242	2	0	88	73
Auburn	2,074	2,058	0	6	512	488
Autaugaville	10	8	0	0	2	5
Avon	2	2	0	1	1	1
Babbie	2	1	0	0	1	1
Baileyton	18	12	1	0	10	6
Bakerhill	7	9	1	0	6	7
Banks	3	1	0	0	3	0
Bay Minette	188	194	0	0	75	39
Bayou La Batre	56	65	0	0	28	32
Bear Creek	17	14	0	0	11	6
Beatrice	3	3	0	0	1	2
Beaverton	2	3	0	0	0	2
Belk	1	3	0	0	1	4
Bellwood	6	0	0	0	5	0
Benton	1	1	0	0	0	0
Berry	10	22	0	0	2	15

CITY	NUMBER OF CRASHES		PERSONS KILLED		PERSONS INJURED	
	2017	2018	2017	2018	2017	2018
Bessemer	1,644	1,909	10	4	444	475
Big Cove	2	1	0	0	3	1
Billingsley	1	0	0	0	0	0
Birmingham	18,589	19,003	43	43	4,393	4,294
Black	1	0	0	0	0	0
Blountsville	28	22	0	0	12	18
Blue Mountain	0	0	0	0	0	0
Blue Springs	0	0	0	0	0	0
Boaz	401	398	3	0	146	111
Boligee	1	0	0	0	0	0
Bon Air	0	0	0	0	0	0
Branchville	0	0	0	0	0	0
Brantley	11	9	0	0	0	1
Brent	55	62	0	0	23	25
Brewton	197	188	0	0	49	50
Bridgeport	37	49	1	1	12	18
Brighton	15	6	0	0	3	1
Brilliant	14	4	0	0	9	3
Brookside	5	5	0	0	2	4
Brookwood	56	53	1	1	20	18
Brownsville	0	0	0	0	0	0
Brundidge	62	49	0	0	19	20
Butler	42	53	1	0	9	26
Calera	638	644	3	2	103	70
Camden	26	33	0	0	26	25
Camp Hill	21	26	0	2	16	18
Carbon Hill	25	40	0	0	13	12
Cardiff	0	0	0	0	0	0
Carolina	2	3	0	0	2	2
Carrollton	28	28	0	0	7	7
Carrville	0	0	0	0	0	0
Castleberry	4	8	0	0	0	1
Cedar Bluff	31	37	1	0	22	10
Center Point	21	11	1	1	3	1
Centre	143	133	4	3	48	62
Centreville	45	41	0	0	22	27
Chatom	22	20	0	1	11	4
Chelsea	159	192	0	0	34	21
Cherokee	16	21	1	0	19	9
Chickasaw	138	101	0	2	33	22



COMPARATIVE City Statistics

2017 VS. 2018 (continued)

CITY	NUMBER OF CRASHES		PERSONS KILLED		PERSONS INJURED	
	2017	2018	2017	2018	2017	2018
Childersburg	85	178	1	0	29	68
Citronelle	108	101	1	0	35	54
Clanton	382	415	3	3	108	119
Clay	12	18	0	0	3	1
Clayhatchee	1	5	1	0	0	3
Clayton	13	12	1	0	8	5
Cleveland	17	16	0	0	2	3
Clio	8	17	0	1	4	7
Coaling	38	41	1	0	20	19
Coffee Springs	1	1	0	0	0	1
Coffeetown	14	2	1	0	7	0
Collinsville	44	39	0	0	7	8
Colony	0	3	0	0	0	3
Columbia	12	14	1	0	4	2
Columbiana	88	116	0	0	30	37
Coosada	39	22	0	0	21	10
Cordova	13	11	0	0	5	1
Cottonwood	22	27	0	0	6	10
County Line-Jeff	1	1	0	0	1	0
Courtland	3	6	0	0	0	6
Cowarts	22	8	0	1	16	2
Creola	67	92	0	0	26	43
Crossville	34	31	1	1	8	6
Cuba	8	5	0	0	6	1
Cullman	992	1,026	0	7	230	229
Dadeville	93	109	0	0	29	25
Daleville	118	99	0	0	30	25
Daphne	942	1,097	3	1	207	294
Dauphin Island	21	21	0	0	11	11
Daviston	1	1	0	0	0	0
Dayton	0	0	0	0	0	0
Deatsville	2	1	0	0	2	1
Decatur	1,980	2,153	6	13	506	527
Demopolis	115	119	0	0	38	53
Detroit	0	2	0	0	0	2
Dodge City	61	54	0	0	21	11
Dora	66	64	0	0	7	15
Dothan	3,216	3,400	8	3	1,202	1,308
Double Springs	25	25	0	0	8	14
Douglas	20	21	0	0	4	3

CITY	NUMBER OF CRASHES		PERSONS KILLED		PERSONS INJURED	
	2017	2018	2017	2018	2017	2018
Dozier	2	1	0	0	0	0
Dutton	6	3	0	0	5	1
East Brewton	39	25	0	0	11	12
Eclectic	38	40	0	0	18	31
Edwardsville	5	1	0	0	3	0
Elba	49	58	0	0	11	14
Elberta	71	72	1	0	29	25
Eldridge	0	1	0	0	0	1
Elkmont	3	5	0	0	0	1
Elmore	23	26	0	0	7	8
Emelle	1	0	0	0	0	0
Enterprise	908	948	1	1	262	253
Epes	0	0	0	0	0	0
Ethelsville	0	0	0	0	0	0
Eufaula	395	410	1	1	154	133
Eunola	1	1	0	0	1	0
Eutaw	46	50	1	0	16	25
Eva	5	2	0	0	3	1
Evergreen	115	115	0	1	51	54
Excel	12	19	0	0	5	5
Fairfield	352	325	2	0	95	125
Fairhope	571	535	1	1	154	108
Fairview	22	12	1	0	14	4
Falkville	44	49	0	0	14	32
Faunsdale	2	1	0	0	0	0
Fayette	126	112	0	1	36	29
Five Points	15	8	0	0	6	3
Flint City	0	0	0	0	0	0
Flomaton	55	49	1	0	12	12
Floral	39	35	0	0	6	11
Florence	1,550	1,524	3	9	318	351
Foley	778	767	0	3	209	210
Forkland	3	1	0	0	3	0
Fort Deposit	18	14	1	0	10	11
Fort Payne	193	154	2	3	45	39
Franklin	8	5	0	0	3	3
Frisco City	19	21	1	1	16	16
Fruithurst	3	2	0	0	1	0
Fulton	12	12	0	0	8	2
Fultondale	382	394	1	0	97	99

CITY	NUMBER OF CRASHES		PERSONS KILLED		PERSONS INJURED	
	2017	2018	2017	2018	2017	2018
Fyffe	29	27	0	0	7	14
Gadsden	1,778	1,790	7	4	602	649
Gainesville	0	0	0	0	0	0
Gantt	3	11	0	1	1	9
Gantts Quarry	0	0	0	0	0	0
Garden City	7	3	1	0	1	0
Gardendale	362	339	1	0	72	100
Gaylesville	5	8	0	0	2	3
Geiger	0	0	0	0	0	0
Geneva	78	67	1	0	23	27
Georgiana	34	26	0	0	17	20
Geraldine	36	29	0	0	16	9
Gilbertown	22	18	0	0	7	3
Glen Allen	0	1	0	0	0	1
Glencoe	115	134	1	0	61	50
Glenwood	1	2	0	0	0	0
Goldville	2	0	0	0	1	0
Good Hope	74	76	1	0	18	18
Goodwater	33	28	0	0	11	16
Gordo	41	37	0	0	14	17
Gordon	1	3	1	0	0	1
Gordonville	0	1	0	0	0	0
Goshen	1	1	0	0	0	0
Grant	15	16	0	0	4	6
Graysville	5	2	0	0	0	0
Greensboro	79	69	0	0	26	20
Greenville	306	282	0	1	88	54
Grimes	11	14	0	0	9	6
Grove Hill	57	54	0	2	20	28
Gu-Win	0	0	0	0	0	0
Guin	28	35	0	0	13	12
Gulf Shores	606	690	1	0	125	149
Guntersville	512	536	2	6	114	126
Gurley	42	49	0	2	27	25
Hackleburg	17	17	0	0	6	10
Haleburg	2	0	0	0	0	0
Haleyville	115	109	1	0	32	26
Hamilton	156	145	0	0	55	37
Hammondville	7	12	1	0	1	5
Hanceville	88	91	0	2	28	44

CITY	NUMBER OF CRASHES		PERSONS KILLED		PERSONS INJURED	
	2017	2018	2017	2018	2017	2018
Harpersville	72	65	1	0	34	26
Hartford	28	47	0	0	8	10
Hartselle	420	425	2	1	89	71
Hayden	56	46	0	0	16	12
Hayneville	16	14	1	0	13	8
Headland	102	90	1	0	34	29
Heath	0	3	0	0	0	4
Heflin	62	68	0	1	21	25
Helena	247	248	1	0	37	38
Henagar	45	57	2	2	15	25
Higdon	9	6	1	0	4	6
Highland Lake	2	0	0	0	0	0
Hillsboro	3	2	0	0	1	1
Hobson City	5	2	0	0	2	0
Hodges	1	0	0	0	0	0
Hokes Bluff	73	70	0	0	38	36
Holly Pond	18	9	0	0	1	6
Hollywood	27	35	0	0	17	11
Homewood	1,835	1,850	0	1	299	294
Hoover	3,276	3,379	5	6	572	492
Hornhill	0	0	0	0	0	0
Hueytown	166	174	0	0	39	44
Huntsville	8,832	8,957	19	24	2,409	2,485
Hurtsboro	5	9	0	0	1	0
Hytop	0	0	0	0	0	0
Ider	16	10	0	0	12	12
Indian Springs	14	11	0	0	3	1
Irondale	234	238	1	1	84	77
Jackson	131	148	3	2	43	51
Jacksons Gap	19	14	0	0	4	9
Jacksonville	293	245	0	1	132	98
Jasper	720	689	3	4	174	197
Jemison	86	62	0	0	26	17
Kansas	0	0	0	0	0	0
Kelly	0	0	0	0	0	0
Kennedy	3	3	0	0	1	0
Killen	83	67	1	1	29	15
Kimberly	34	31	0	0	12	12
Kinsey	31	27	0	0	11	6
Kinston	6	8	0	0	1	7



COMPARATIVE City Statistics

2017 VS. 2018 (continued)

CITY	NUMBER OF CRASHES		PERSONS KILLED		PERSONS INJURED	
	2017	2018	2017	2018	2017	2018
Lafayette	67	66	1	0	19	16
Lake View	22	32	0	0	8	11
Lakeview	6	5	0	0	1	1
Lanett	267	292	2	0	66	72
Langston	0	3	0	0	0	1
Leeds	244	263	0	1	81	83
Leesburg	35	39	0	1	15	12
Leighton	7	9	0	0	8	1
Lester	2	0	0	0	1	0
Level Plains	33	36	1	0	12	8
Lexington	13	10	0	0	5	3
Libertyville	0	0	0	0	0	0
Lincoln	280	259	1	3	85	61
Linden	41	30	1	1	10	9
Lineville	35	48	0	1	6	9
Lipscomb	10	16	0	2	3	5
Lisman	4	0	0	0	5	0
Littleville	20	13	1	3	12	9
Livingston	58	57	1	1	13	18
Loachapoka	6	6	0	0	1	5
Lockhart	5	3	0	0	0	0
Locust Fork	9	5	0	0	2	2
Louisville	0	0	0	0	0	0
Lowndesboro	2	1	1	0	0	0
Loxley	199	174	4	0	80	56
Luverne	65	80	0	0	24	22
Lynn	7	3	0	0	5	3
Macedonia	0	0	0	0	0	0
Madison	1,302	1,440	2	2	378	380
Madrid	1	2	0	0	0	1
Malvern	8	23	0	0	9	6
Maplesville	14	18	1	0	6	18
Margaret	28	25	1	1	14	8
Marion	0	16	0	0	0	10
Maytown	0	0	0	0	0	0
McIntosh	21	24	0	0	11	6
Mckenzie	3	6	1	0	2	4
McMullen	0	0	0	0	0	0
Memphis	0	0	0	0	0	0
Mentone	10	8	0	0	4	1

CITY	NUMBER OF CRASHES		PERSONS KILLED		PERSONS INJURED	
	2017	2018	2017	2018	2017	2018
Midfield	205	248	2	2	87	69
Midland City	88	76	4	0	22	17
Midway	5	2	0	0	3	0
Millbrook	459	458	0	0	167	194
Millport	1	1	0	0	0	1
Millry	15	10	0	0	10	3
Mobile	11,933	11,980	31	31	3,123	2,839
Monroeville	125	153	0	0	45	79
Montevallo	232	212	0	1	38	63
Montgomery	9,356	9,433	14	25	3,377	3,290
Moody	309	292	0	1	76	84
Moores Crossroads	0	0	0	0	0	0
Mooresville	0	0	0	0	0	0
Morris	21	11	0	0	9	2
Mosses	5	3	0	0	1	2
Moulton	121	100	0	0	56	36
Moundville	61	73	0	0	27	39
Mountain Brook	726	753	0	1	117	122
Mountainboro	5	6	0	0	2	1
Mt. Vernon	0	60	0	0	0	33
Mulga	0	0	0	0	0	0
Munford	51	52	0	0	21	18
Muscle Shoals	716	679	1	3	128	121
Myrtlewood	1	0	0	0	2	0
Napier Field	2	3	0	0	0	2
Nauvoo	3	1	0	0	1	0
Nectar	0	5	0	0	0	4
Needham	0	0	0	0	0	0
New Brockton	14	7	0	0	5	2
New Hope	68	56	2	0	41	22
New Site	13	15	0	0	4	11
Newbern	0	1	0	0	0	0
Newsome	0	0	0	0	0	0
Newton	31	40	0	0	8	13
Newville	0	1	0	0	0	0
North Bibb	0	0	0	0	0	0
North Courtland	9	14	0	0	0	6
North Johns	0	0	0	0	0	0
Northport	1,187	1,221	2	2	248	237
Notasulga	20	16	0	0	5	3

CITY	NUMBER OF CRASHES		PERSONS KILLED		PERSONS INJURED	
	2017	2018	2017	2018	2017	2018
Oak Grove	13	13	0	1	7	11
Oak Hill	0	1	0	0	0	0
Oakman	7	3	0	0	1	1
Odenville	138	172	1	1	35	35
Ohatchee	25	30	0	0	11	6
Oneonta	175	213	1	1	34	47
Onycha	1	0	0	0	0	0
Opelika	2,279	1,757	5	5	536	534
Opp	109	101	4	2	55	38
Orange Beach	389	383	2	0	84	74
Orrville	5	6	0	0	2	2
Owens Crossroads	41	40	0	3	12	11
Oxford	917	925	1	4	260	280
Ozark	320	317	3	2	69	82
Paint Rock	14	7	4	0	13	1
Parrish	19	18	0	0	6	9
Pelham	1,337	1,348	0	2	160	167
Pell City	402	488	0	0	101	157
Pennington	2	0	1	0	1	0
Petrey	1	0	0	0	0	0
Phenix City	2,170	2,142	4	7	715	625
Phil Campbell	18	13	0	0	9	1
Pickensville	8	7	0	0	0	2
Piedmont	123	107	0	0	35	25
Pike Road	51	29	0	3	15	9
Pinckard	19	20	0	0	13	4
Pine Apple	2	1	0	0	2	0
Pine Hill	21	31	0	1	8	17
Pine Ridge	0	5	0	0	0	0
Pisgah	3	5	0	0	3	3
Pleasant Grove	70	87	1	0	24	23
Pollard	0	0	0	0	0	0
Powell	22	24	0	1	14	10
Prattville	1,048	1,093	2	2	327	286
Priceville	113	100	0	0	29	30
Prichard	936	825	3	8	515	325
Providence	3	1	1	0	0	3
Ragland	14	12	0	1	7	6
Rainbow City	329	293	0	1	75	67
Rainsville	145	171	2	0	59	33

CITY	NUMBER OF CRASHES		PERSONS KILLED		PERSONS INJURED	
	2017	2018	2017	2018	2017	2018
Ranburne	10	14	0	0	3	3
Red Bay	64	56	1	3	20	11
Red Level	2	3	1	0	0	1
Reece City	15	7	1	0	9	4
Reform	39	34	0	0	14	17
Rehobeth	7	3	0	0	4	0
Repton	4	2	0	0	5	0
Ridgeville	0	2	0	0	0	1
River Falls	19	25	0	0	14	10
Riverside	33	34	0	0	20	7
Riverview	3	1	0	0	2	1
Roanoke	113	136	0	1	21	32
Robertsdale	206	207	0	2	34	60
Rockford	6	2	0	0	2	2
Rogersville	64	69	0	0	13	12
Roosevelt City	1	0	0	0	0	0
Rosa	7	4	0	0	4	2
Rural Autauga	481	511	12	7	157	176
Rural Baldwin	1,414	1,407	14	23	553	601
Rural Barbour	130	171	3	6	64	91
Rural Bibb	188	176	6	1	91	82
Rural Blount	546	554	22	19	270	261
Rural Bullock	74	98	3	4	51	56
Rural Butler	373	383	13	5	148	137
Rural Calhoun	1,093	1,102	14	16	500	489
Rural Chambers	212	163	1	4	85	83
Rural Cherokee	287	324	5	6	130	157
Rural Chilton	579	646	7	13	261	257
Rural Choctaw	130	117	4	2	72	64
Rural Clarke	124	118	1	8	72	114
Rural Clay	104	113	1	5	54	56
Rural Cleburne	349	339	3	5	119	123
Rural Coffee	287	365	6	12	149	186
Rural Colbert	405	353	16	7	220	183
Rural Conecuh	260	287	5	4	105	118
Rural Coosa	217	209	6	5	93	96
Rural Covington	253	232	6	5	130	104
Rural Crenshaw	170	176	3	4	73	63
Rural Cullman	1,165	1,075	19	21	422	323
Rural Dale	253	272	2	4	124	119



COMPARATIVE City Statistics

2017 VS. 2018 (continued)

CITY	NUMBER OF CRASHES		PERSONS KILLED		PERSONS INJURED	
	2017	2018	2017	2018	2017	2018
Rural Dallas	401	385	8	8	226	224
Rural Dekalb	418	435	12	6	164	190
Rural Elmore	629	646	5	7	221	224
Rural Escambia	418	490	12	9	207	245
Rural Etowah	495	480	9	4	230	214
Rural Fayette	135	132	7	3	74	102
Rural Franklin	257	208	6	6	129	112
Rural Geneva	231	208	8	3	99	89
Rural Greene	260	267	5	14	99	103
Rural Hale	171	143	6	6	102	87
Rural Henry	120	154	4	2	52	51
Rural Houston	482	464	3	5	206	207
Rural Jackson	340	331	7	6	164	167
Rural Jefferson	3,736	4,122	14	28	902	1,060
Rural Lamar	92	101	3	3	45	48
Rural Lauderdale	595	605	10	14	218	241
Rural Lawrence	367	415	7	12	198	177
Rural Lee	831	833	9	11	320	280
Rural Limestone	932	1,026	21	16	320	331
Rural Lowndes	276	336	9	9	105	155
Rural Macon	499	512	15	8	179	158
Rural Madison	2,004	2,086	14	13	734	690
Rural Marengo	162	156	4	5	100	89
Rural Marion	215	206	4	4	128	100
Rural Marshall	591	592	5	12	339	273
Rural Mobile	2,058	2,208	38	31	788	807
Rural Monroe	153	150	5	5	88	74
Rural Montgomery	798	901	5	14	299	372
Rural Morgan	675	817	11	5	305	291
Rural Perry	75	65	2	1	44	23
Rural Pickens	148	158	0	5	75	82
Rural Pike	333	299	11	2	138	122
Rural Randolph	157	164	4	7	94	90
Rural Russell	498	543	12	9	260	263
Rural Shelby	1,401	1,502	10	16	338	414
Rural St. Clair	790	904	18	21	276	338
Rural Sumter	198	204	6	3	103	72
Rural Talladega	929	934	21	11	354	436
Rural Tallapoosa	212	172	3	2	72	69
Rural Tuscaloosa	1,808	1,935	20	20	593	640

CITY	NUMBER OF CRASHES		PERSONS KILLED		PERSONS INJURED	
	2017	2018	2017	2018	2017	2018
Rural Walker	703	702	18	20	380	315
Rural Washington	183	189	6	0	132	109
Rural Wilcox	102	82	5	2	75	70
Rural Winston	151	157	7	2	91	79
Russellville	224	269	1	2	97	103
Rutledge	7	10	0	0	0	1
Samson	27	31	0	1	22	19
Sand Rock	13	9	0	0	3	4
Sanford	7	3	0	0	7	2
Saraland	628	586	1	2	179	237
Sardis City	51	50	3	0	22	25
Satsuma	94	83	1	0	32	22
Scottsboro	537	572	2	0	188	173
Section	30	26	0	0	1	5
Selma	550	548	3	2	219	243
Sheffield	233	238	1	0	58	70
Shiloh	1	2	0	0	1	1
Shorter	6	4	0	0	0	1
Silas	2	3	0	0	0	1
Siluria	0	0	0	0	0	0
Silverhill	63	65	0	2	22	22
Sipsey	5	8	0	1	1	4
Skyline	12	8	0	0	4	2
Slocomb	38	42	0	1	17	17
Smiths Station	64	81	0	0	20	16
Snead	58	55	0	0	29	22
Somerville	31	23	1	0	21	5
Southside	95	123	0	0	30	47
Spanish Fort	4	5	0	0	1	2
Springville	87	75	0	0	14	24
St. Florian	56	44	1	4	12	20
Steele	7	27	0	0	2	5
Stevenson	89	73	3	0	24	31
Sulligent	38	34	1	0	13	18
Sumiton	100	91	0	0	35	28
Summerdale	102	112	0	2	30	48
Susan Moore	13	3	0	0	8	0
Sweet Water	1	0	0	0	0	0
Sylacauga	326	379	1	0	69	76
Sylvania	40	32	1	0	25	10

CITY	NUMBER OF CRASHES		PERSONS KILLED		PERSONS INJURED	
	2017	2018	2017	2018	2017	2018
Sylvania Springs	1	0	0	0	0	0
Talladega	290	335	2	4	103	86
Talladega Springs	3	1	0	0	1	1
Tallassee	186	184	1	2	78	63
Tarrant City	348	355	3	2	81	140
Taylor	23	28	1	0	8	7
Thomaston	1	9	0	0	0	1
Thomasville	122	147	0	1	57	57
Thorsby	26	32	0	0	5	13
Town Creek	16	21	0	0	6	10
Toxey	0	4	0	0	0	0
Trafford	0	0	0	0	0	0
Triana	5	8	0	0	2	1
Trinity	41	46	0	0	5	15
Troy	731	750	0	0	159	165
Trussville	929	933	2	3	228	213
Tuscaloosa	5,167	5,420	12	4	1,395	1,379
Tuscumbia	273	221	0	2	65	61
Tuskegee	190	159	0	0	70	71
Twin	0	0	0	0	0	0
Union	0	0	0	0	0	0
Union Grove	1	2	0	0	0	0
Union Springs	110	93	3	0	45	34
Uniontown	27	15	0	0	24	4
Valley	332	364	1	2	100	114
Valley Grande	17	10	0	1	13	6
Valley Head	9	11	1	0	3	2
Vance	46	44	1	0	17	20
Vernon	56	52	0	0	34	28
Vestavia Hills	956	947	0	1	128	113
Vina	4	1	0	0	3	0
Vincent	24	23	1	0	22	23
Vinemont	18	8	1	2	6	5
Vredenburgh	0	1	0	0	0	1
Wadley	5	3	1	0	5	3
Waldo	5	0	0	0	3	0
Walnut Grove	19	11	0	0	17	6
Warrior	92	91	0	0	33	22
Waterloo	3	0	0	0	3	0
Waverly	0	3	0	0	0	2

CITY	NUMBER OF CRASHES		PERSONS KILLED		PERSONS INJURED	
	2017	2018	2017	2018	2017	2018
Weaver	26	33	0	0	7	19
Webb	27	31	0	0	13	11
Wedowee	44	49	0	0	9	8
West Blocton	27	25	0	0	15	7
West End	0	0	0	0	0	0
West Jefferson	0	1	0	0	0	0
West Point	15	19	0	0	5	7
Weston	0	0	0	0	0	0
Westover	8	3	0	0	4	2
Wetumpka	503	502	0	3	182	220
Whitehall	5	3	0	0	5	0
Whites Chapel	0	0	0	0	0	0
Wilmer	8	6	0	0	4	0
Wilsonville	21	11	1	0	9	7
Wilton	3	2	0	0	1	1
Winfield	110	103	4	1	52	41
Woodland	11	2	0	0	3	0
Woodstock	53	65	2	0	14	17
Woodville	16	5	0	0	8	1
Yellow Bluff	0	2	0	0	0	2
York	20	13	1	0	1	1
Unknown	2	0	0	0	0	0
Total	156,952	159,925	948	953	47,742	47,419



Transforming ALABAMA'S SAFETY CULTURE

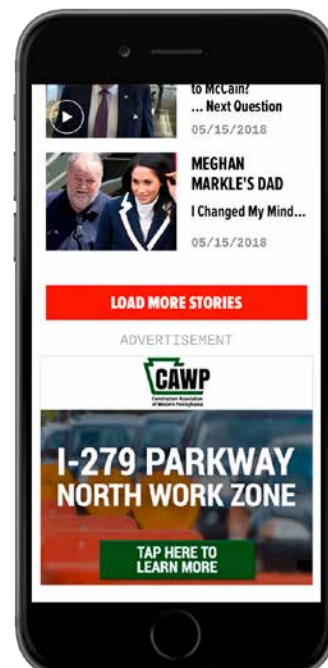
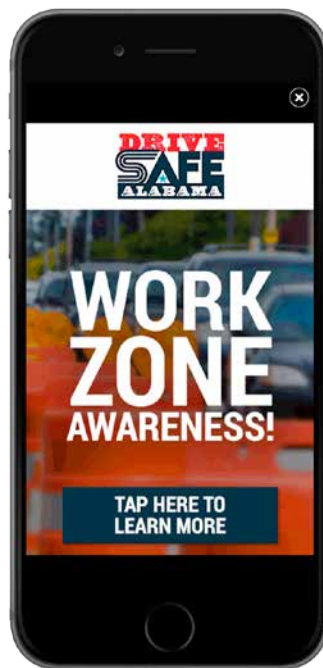
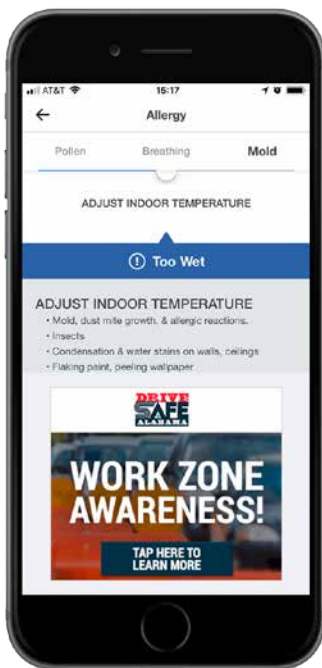
Work Zone Safety Campaign

Participating in National Work Zone Awareness Week brought attention to the more than 3,500 Alabama work zone crashes of 2018. ALDOT held a work zone safety press conference in Mobile, AL to bring media attention to the need for work zone safety.

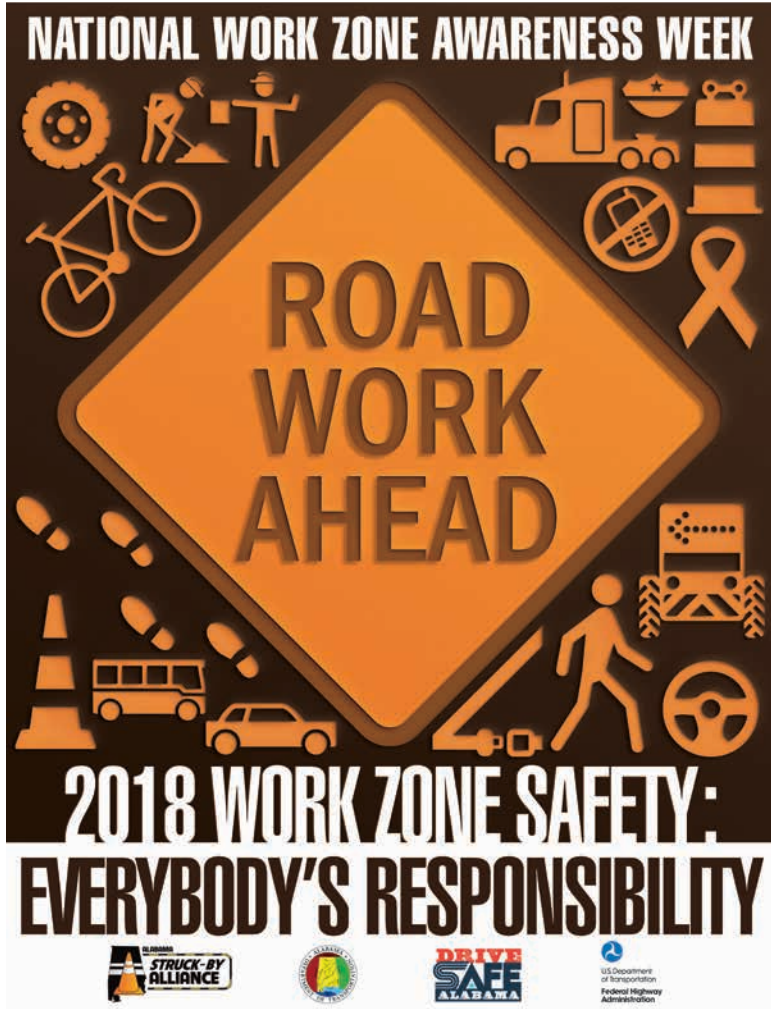
ALDOT used digital technology to promote work zone safety for the state's largest project, the closure of Interstate 59/20 in the Birmingham Central Business District. Mobile safety messages were targeted to those who regularly drive through the work zone. Governor Kay Ivey signed a proclamation for Work Zone Awareness Week in Alabama alongside two ALDOT employees that were struck by a driver in a work zone in 2017.



Digital Campaign



Digital Campaign



Poster Advertising



Governor's Proclamation Work Zone Awareness Week



Governor's Work Zone Proclamation Ceremony



Gov. Kay Ivey Visits National Work Zone Memorial

Transforming ALABAMA'S SAFETY CULTURE *(continued)*

Reaching Alabama

College sports are at the center of daily life in the South. And in Alabama, college football is a really big deal. Outreach through college sports gave ALDOT the opportunity to reach hundreds of thousands of people across the state with its Drive Safe Alabama campaign. Radio and print advertising, digital

marketing, in-stadium signage, and social media were included in this sports marketing outreach. Along with promoting seat belt usage, the Drive Safe Alabama campaign reached football fans with messages to encourage sober drivers to take the wheel.



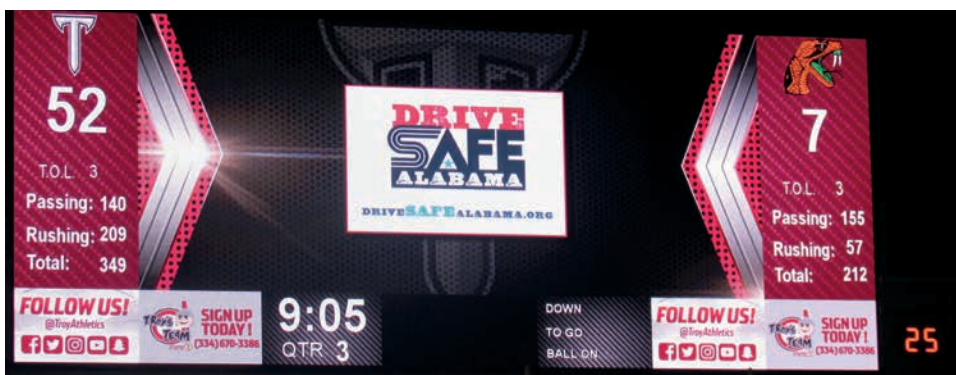
Drive Safe Alabama Online Skills Drill



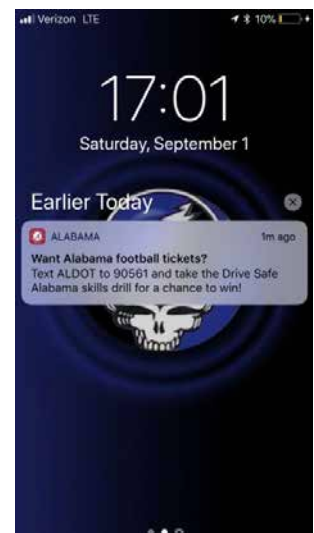
Social Media



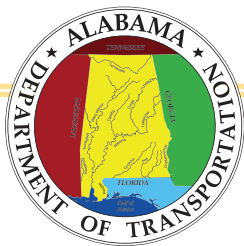
Digital Ads



In-Stadium Promotion



Mobile Push Notifications



ALABAMA DEPARTMENT OF TRANSPORTATION

dot.state.al.us

MEDIA & COMMUNITY RELATIONS BUREAU

Central Office:
1409 Coliseum Boulevard, Montgomery, Alabama 36110

TONY HARRIS
Bureau Chief &
Government Relations Manager
334.242.6552
harrist@dot.state.al.us

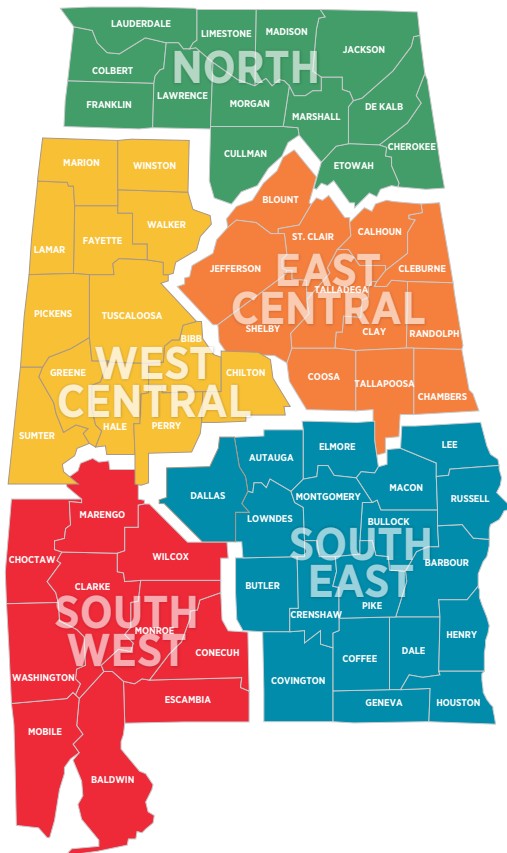
ALLISON GREEN
Marketing &
Communication Specialist
Drive Safe Alabama Coordinator
334.353.6534
greena@dot.state.al.us

HALEY ANSLEY
Public Information Officer
334.242.6729
ansleyh@dot.state.al.us

JOSH PHILLIPS
Public Information Officer
334.242.6730
phillipsjo@dot.state.al.us

AMANDA DEEM
Public Information Officer
334.242.6963
deema@dot.state.al.us

REGIONAL PUBLIC INFORMATION OFFICES



NORTH REGION
1525 Perimeter Parkway
Huntsville, AL 35086

SOUTHWEST REGION
1701 I-65 West Service Road North
Mobile, AL 36618

SETH BURKETT
Public Information Officer
256.505.4964
burkett@dot.state.al.us

KATELYN TURNER
Public Information Officer
251.470.8375
turnerke@dot.state.al.us
Twitter @ALDOTMobileArea

WEST CENTRAL REGION
204 Marina Drive
Tuscaloosa, AL 35406

SOUTHEAST REGION
Capitol Commerce Center
100 Capitol Commerce Boulevard
Building B, Suite 210
Montgomery, AL 36117

JOHN MCWILLIAMS
Public Information Officer
205.562.3115
mcwilliamsj@dot.state.al.us

BRANTLEY KIRK
Public Information Officer
334.353.6862
kirkb@dot.state.al.us

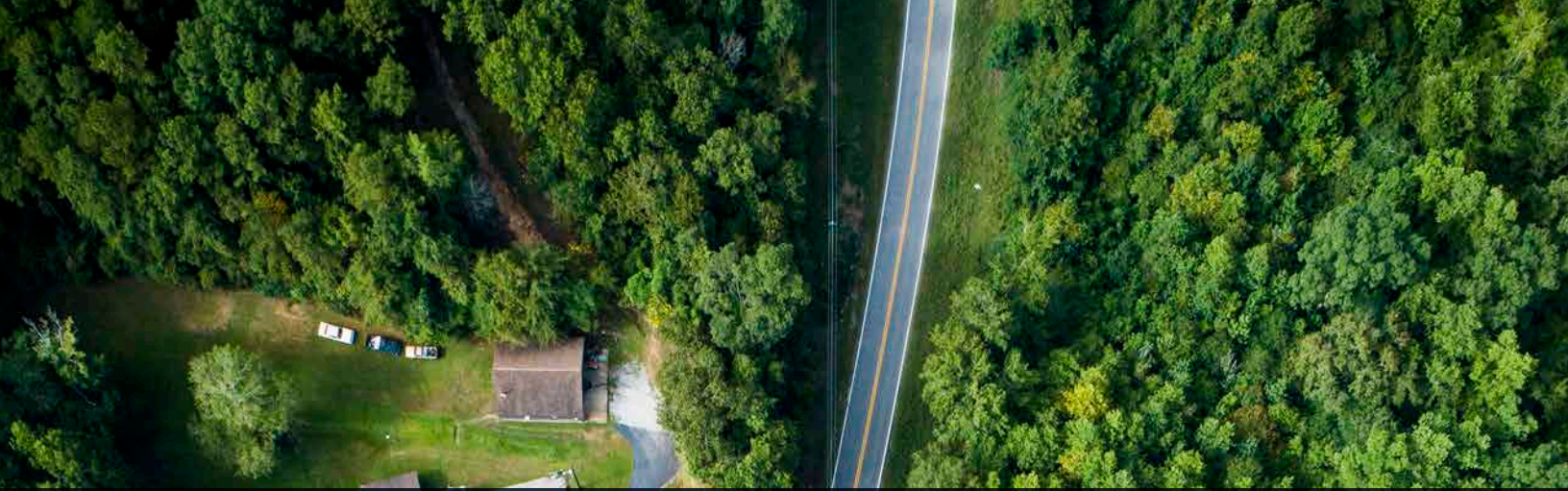
EAST CENTRAL REGION
100 Corporate Parkway, Suite 450
Hoover, AL 35242

LINDA CROCKETT
Public Information Officer
205.327.4973
crockettl@dot.state.al.us



DRIVE SAFE ALABAMA.ORG





ALABAMA DEPARTMENT OF TRANSPORTATION

www.dot.state.al.us | Contact us at aldotinfo@dot.state.al.us

