



Alabama Department of Transportation  
**2013 CRASH FACTS**





## LETTER FROM THE **TRANSPORTATION DIRECTOR**

The Alabama Department of Transportation is committed to providing safe roadways by using innovative engineering techniques, performing scheduled routine maintenance, and managing funding in a fiscally responsible and priority-based manner.

We all share a responsibility for safety on Alabama's roadways. As you review the data in the 2013 Crash Facts book, consider your personal commitment to safety and the things you can do to help reduce the number of crashes in Alabama. Always obey speed limits; drive sober; buckle up; share the road with motorcycles, bicycles and pedestrians; obey railroad crossing signals; avoid any and all forms of distracted driving; and lead by example by teaching young people safe driving habits.

On page 22 the data reflects the number of vehicle occupants killed in crashes that were not wearing seat belts and/or properly restrained.

**Almost 60 percent of fatalities were not restrained in vehicles where seat belts were available.**

Statistics prove seat belts and using proper safety restraints save lives. It's also a fact that violators of Alabama's restraint laws may be fined and assessed points on their driver licenses. Simply put, there's no good reason not to buckle up.

Drive Safe Alabama!

John R. Cooper  
Transportation Director

## Table of Contents

<i>Quick Facts</i>	4
<i>Ten-Year Crash Data</i>	5
<i>Fatality Rate Trends</i>	6
<i>Types of Crashes</i>	7
<i>Time Data</i>	8
<i>Involvement by Age and Gender</i>	10
<i>Crash Location</i>	12
<i>Crash Environment</i>	14
<i>Holiday Crash Statistics</i>	15
<i>Type of Roadway</i>	16
<i>Alcohol and Drug Involvement</i>	17
<i>Intersection Crashes by County</i>	18
<i>Nonintersection Crashes by County</i>	19
<i>The Driver</i>	20
<i>Motorcycle Crash Statistics</i>	21
<i>Safety Restraint Usage</i>	22
<i>Bicycle Crash Statistics</i>	24
<i>Pedestrian Crash Statistics</i>	25
<i>Train Involved Crash Statistics</i>	26
<i>Work Zone Crash Statistics</i>	27
<i>Truck Crash Statistics</i>	28
<i>Fatalities by County</i>	29
<i>Traffic Crashes by County</i>	30
<i>Comparative County Statistics</i>	38
<i>Comparative City Statistics</i>	40
<i>Media Contact Information</i>	47

# 2013 CRASH FACTS



# 2013 CRASH DATA QUICK FACTS

## Overall Crash Data

	2013	2013 VS. 2012
<b>ALL CRASHES</b>	126,862	decreased 1.13%
<b>INJURIES</b>	37,559	decreased 6.57%
<b>FATAL CRASHES</b>	757	decreased 6.89%
<b>FATALITIES</b>	852	decreased 2.07%
<b>REGISTERED VEHICLES IN AL</b>	5,312,465	increased 4.58%
<b>LICENSED DRIVERS IN AL</b>	3,890,463	increased 0.85%
<b>VEHICLE MILES TRAVELED IN AL</b>	65,058,695,000	increased 0.15%

Based on 2013 crash data, a typical driver in Alabama has greater than one-in-three chances of involvement in an injury or fatal crash operating a vehicle over his or her lifetime.

The probability of an individual being in a crash of any severity during their lifetime is greater than 98%.

There were 852 people killed in 757 fatal crashes.

A traffic crash was reported every 4.15 minutes.

A person was injured in a traffic crash every 14 minutes.

A person was killed in a traffic crash every 10 hours and 17 minutes.

For fatal crashes where a restraint was available for use, 56 percent of fatalities were unrestrained.

Most Alabama crashes (75 percent) occurred in urban areas, but most fatalities (55 percent) occurred in rural areas.

Of all fatal crashes, 9 percent were caused by drivers 19 or under, and 24 percent were caused by drivers under 25 years of age.

For each fatality, there were 44 injuries.

Of all fatal crashes, 49 percent occurred at night (including dusk and dawn).

The pedestrian death toll was 57.

There were 76 fatalities involving motorcycle or moped riders.

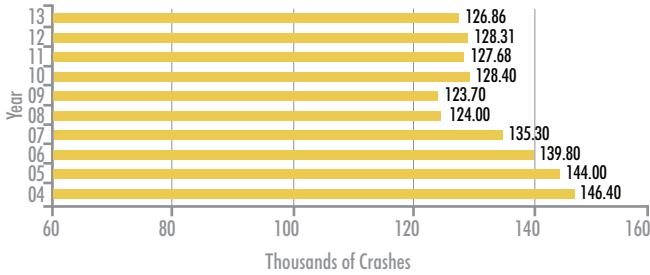
Bicyclists accounted for 6 fatalities.

There were 4 fatalities with train involvement.

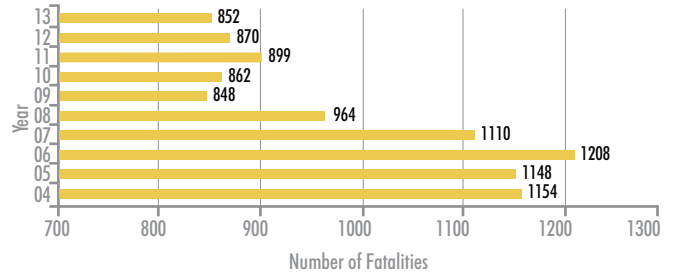
For front seat occupants in vehicle crashes, the probability of being killed is 47 times higher for those not wearing safety belts than those who are properly restrained.

# TEN YEAR CRASH DATA 2004-2013

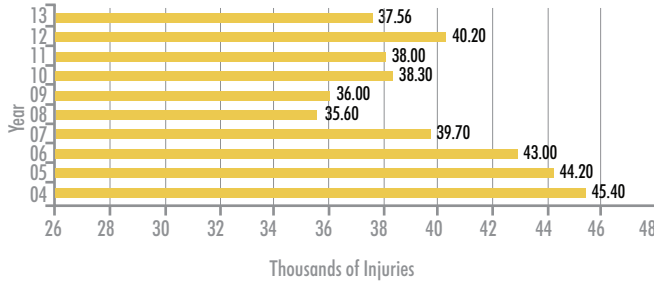
## Crashes Decreased 13.35%



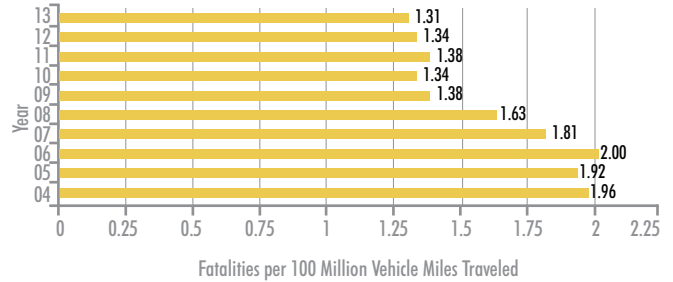
## Fatalities Decreased 26.17%



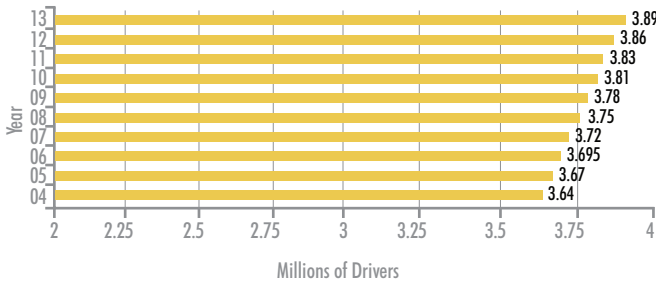
## Injuries Decreased 17.27%



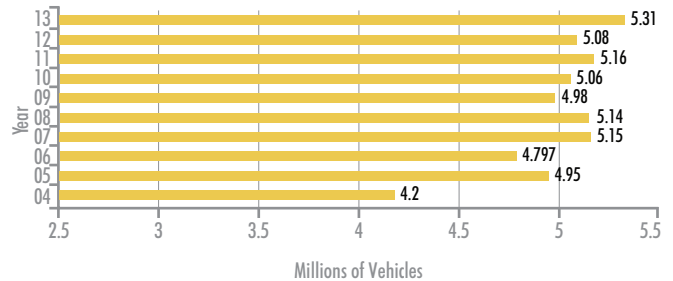
## Mileage Death Rate Decreased 33.16%



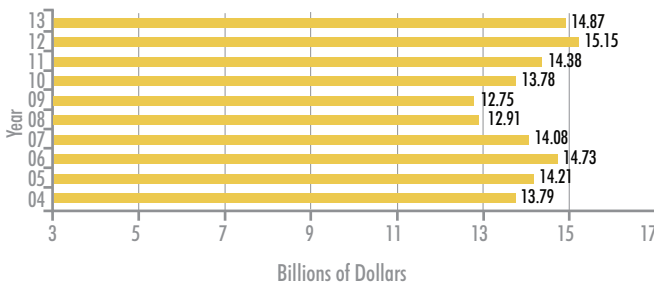
## Licensed Drivers Increased 6.87%



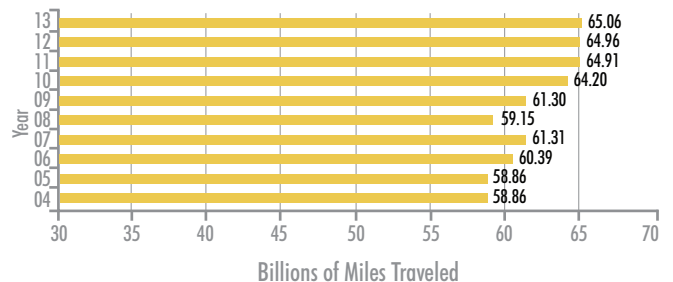
## Motor Vehicle Registrations Increased 26.43%



## Economic Loss Increased 7.80%



## Vehicle Miles Traveled Increased 10.53%



The increase/decrease percentage of change includes the entire time frame represented.

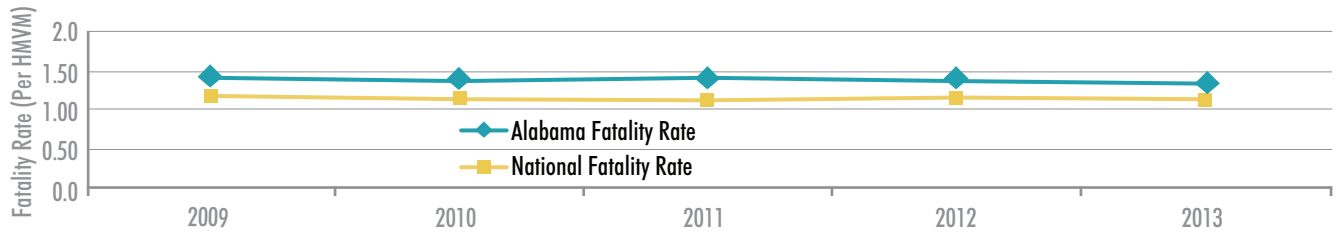
# FATALITY RATE TRENDS

## Crash Totals and Rates for the Past Five Years

YEAR	TOTAL CRASHES	TOTAL INJURIES	TOTAL FATALITIES	ALABAMA FATALITY RATE (PER HMVM*)	NATIONAL FATALITY RATE (PER HMVM*)
2009	123,731	35,969	848	1.4	1.2
2010	128,384	38,328	862	1.3	1.1
2011	127,683	38,017	899	1.4	1.1
2012	128,307	40,202	870	1.3	1.1
2013	126,862	37,559	852	1.3	1.1

\*Hundred Million Vehicle Miles Traveled

## Fatality Rate: State Versus National



The fatality rate in Alabama remains above the national average.

# TYPES OF CRASHES

## First Harmful Event

EVENT	TOTAL CRASHES	% OF ALL CRASHES	NONFATAL INJURIES	FATALITIES
Hit Other Vehicle	88,734	69.9%	25,311	309
Hit Fixed Object or Other Object	17,234	13.6%	6,503	293
Overtaking	1,660	1.3%	1,079	60
Hit Pedestrian	493	0.4%	434	39
Hit Parked Vehicle	4,601	3.6%	288	8
Hit Railway Train	69	0.1%	29	4
Other Non-Collision	321	0.3%	128	3
Hit Bicyclist	143	0.1%	105	3
Hit Animal	2,834	2.2%	286	2
All other	10,773	8.5%	3,396	131
<b>TOTAL</b>	<b>126,862</b>	<b>100.0%</b>	<b>37,559</b>	<b>852</b>

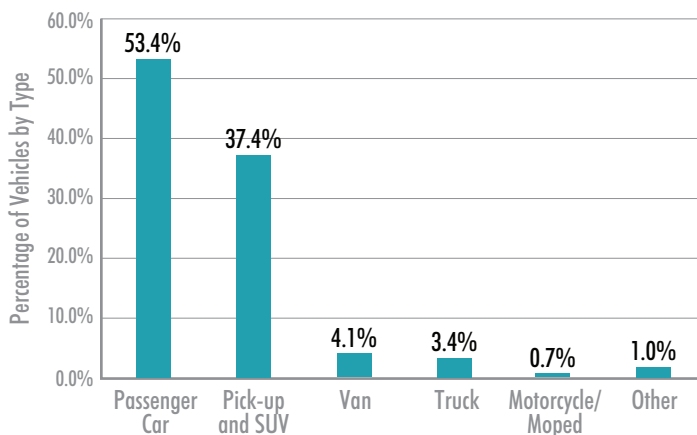
## Vehicle Type

TYPE	VEHICLES INVOLVED IN CRASHES	% OF VEHICLES
Passenger Car	122,925	53.4%
Pick-up and SUV	86,153	37.4%
Van	9,470	4.1%
Truck	7,751	3.4%
Motorcycle/Moped	1,721	0.7%
Other	2,354	1.0%
<b>TOTAL</b>	<b>230,374</b>	<b>100.0%</b>

## Hazardous Cargo

CARGO TYPE	CRASHES	
Gas/Flammable	105	71.9%
Corrosive	21	14.4%
Explosive	2	1.4%
Radioactive	0	0.0%
Other	18	12.3%
<b>TOTAL</b>	<b>146</b>	<b>100.0%</b>

## Vehicle Type



## Quick Facts

The most crash-prone day of the week is Friday.

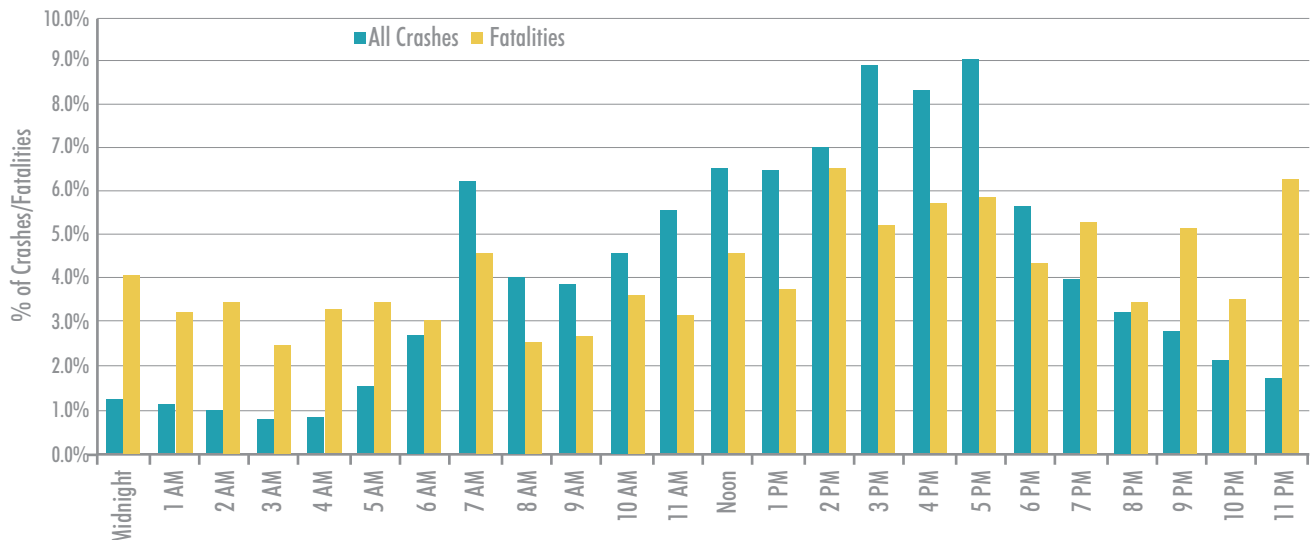
The most crash-prone period of the day is 2:00-6:00 in the afternoon.

More crashes with fatalities occur on Saturday.

## Time of Day

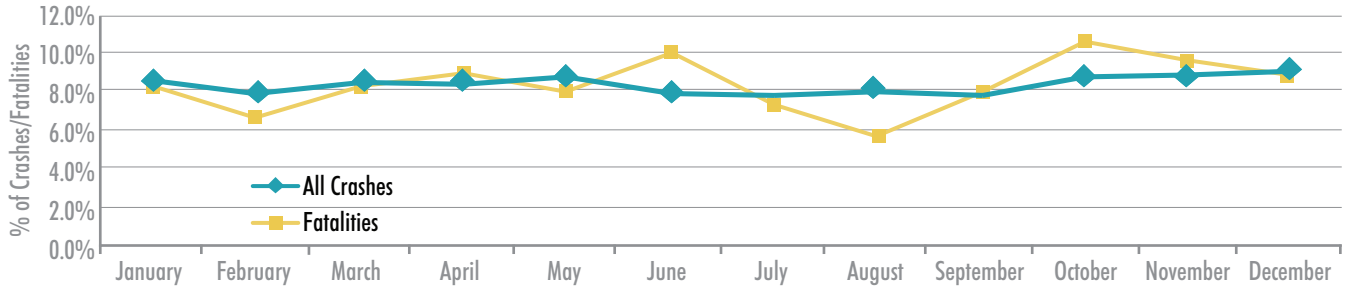
HOUR	CRASHES		FATALITIES	
Midnight	1,667	1.3%	35	4.1%
1:00 AM	1,476	1.2%	28	3.3%
2:00 AM	1,352	1.1%	29	3.4%
3:00 AM	1,140	0.9%	21	2.5%
4:00 AM	1,204	0.9%	28	3.3%
5:00 AM	1,895	1.5%	29	3.4%
6:00 AM	3,260	2.6%	26	3.1%
7:00 AM	7,988	6.3%	38	4.5%
8:00 AM	5,186	4.1%	21	2.5%
9:00 AM	4,867	3.8%	23	2.7%
10:00 AM	5,703	4.5%	30	3.5%
11:00 AM	7,053	5.6%	27	3.2%
Noon	8,283	6.5%	39	4.6%
1:00 PM	8,169	6.4%	32	3.8%
2:00 PM	8,982	7.1%	56	6.6%
3:00 PM	11,410	9.0%	45	5.3%
4:00 PM	10,602	8.4%	49	5.8%
5:00 PM	11,555	9.1%	50	5.9%
6:00 PM	7,277	5.7%	37	4.3%
7:00 PM	5,048	4.0%	47	5.5%
8:00 PM	4,163	3.3%	30	3.5%
9:00 PM	3,590	2.8%	44	5.2%
10:00 PM	2,763	2.2%	30	3.5%
11:00 PM	2,110	1.7%	53	6.2%
Unknown	119	0.1%	5	0.6%
<b>TOTAL</b>	<b>126,862</b>	<b>100.0%</b>	<b>852</b>	<b>100.0%</b>

## Time of Day





## Month of Year



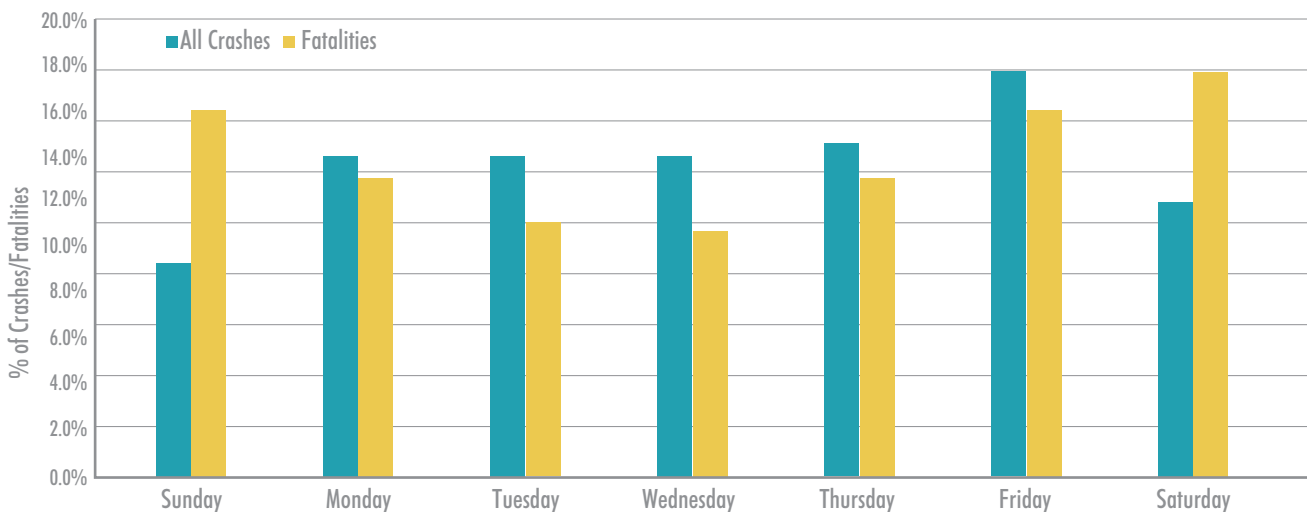
## Month of Year

MONTH	CRASHES		FATALITIES	
	Count	%	Count	%
January	10,807	8.5%	71	8.3%
February	9,947	7.8%	56	6.6%
March	10,693	8.4%	71	8.3%
April	10,660	8.4%	76	8.9%
May	11,097	8.7%	68	8.0%
June	10,007	7.9%	85	10.0%
July	9,917	7.8%	63	7.3%
August	10,122	8.0%	47	5.6%
September	9,825	7.7%	68	8.0%
October	11,141	8.8%	90	10.6%
November	11,196	8.8%	82	9.6%
December	11,450	9.0%	75	8.8%
<b>TOTAL</b>	<b>126,862</b>	<b>100.0%</b>	<b>852</b>	<b>100.0%</b>

## Day of Week

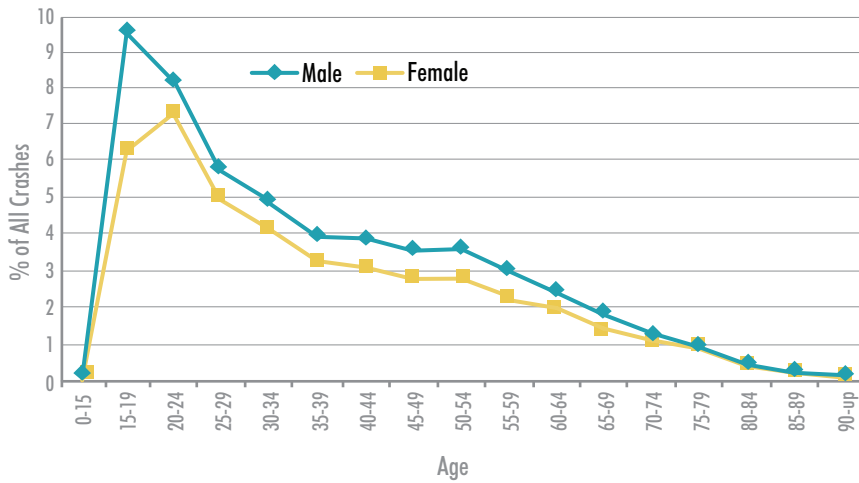
DAY	CRASHES		FATALITIES	
	Count	%	Count	%
Sunday	12,449	9.8%	138	16.1%
Monday	18,527	14.6%	116	13.7%
Tuesday	18,692	14.7%	96	11.3%
Wednesday	18,403	14.5%	95	11.1%
Thursday	19,283	15.2%	112	13.2%
Friday	22,963	18.1%	140	16.4%
Saturday	16,545	13.0%	155	18.2%
<b>TOTAL</b>	<b>126,862</b>	<b>100.0%</b>	<b>852</b>	<b>100.0%</b>

## Day of Week



# INVOLVEMENT BY AGE AND GENDER

## Percentage Causal Drivers Involved in All Traffic Crashes by Age and Gender

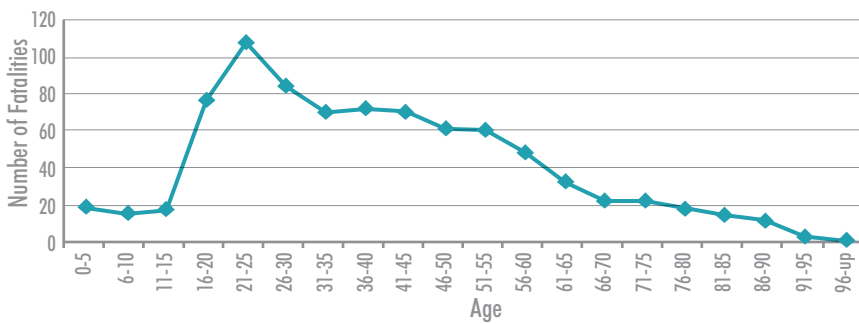


The causal driver is the driver of the vehicle that was determined to have caused the traffic crash. Crashes for all vehicle types are included. Each crash has only one causal driver.

## Fatalities by Age

AGE (Years)	PERSONS KILLED
0-5	18
6-10	14
11-15	16
16-20	76
21-25	111
26-30	86
31-35	70
36-40	72
41-45	71
46-50	62
51-55	61
56-60	52
61-65	33
66-70	23
71-75	23
76-80	18
81-85	13
86-90	12
91-95	4
96-up	1
Unknown	16
<b>TOTAL</b>	<b>852</b>

## Fatalities by Age



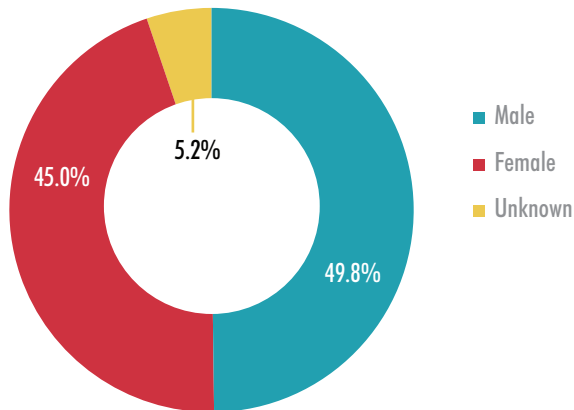
## Drivers Involved in Crashes by Age

AGE	LICENSED DRIVERS	DRIVERS INVOLVED IN ALL CRASHES	DRIVERS INVOLVED IN FATAL CRASHES
0-15	126	92	3
15-19	244,436	24,154	74
20-24	334,979	31,322	132
25-29	332,552	23,677	128
30-34	314,898	21,166	102
35-39	294,818	18,059	110
40-44	318,550	17,743	100
45-49	317,823	16,629	102
50-54	344,475	16,433	81
55-59	333,114	14,186	84
60-64	292,978	11,448	55
65-69	248,061	8,375	43
70-74	186,023	5,871	26
74-up	327,630	9,557	60
Unknown	0	11,662	23
<b>TOTAL</b>	<b>3,890,463</b>	<b>230,374</b>	<b>1,123</b>

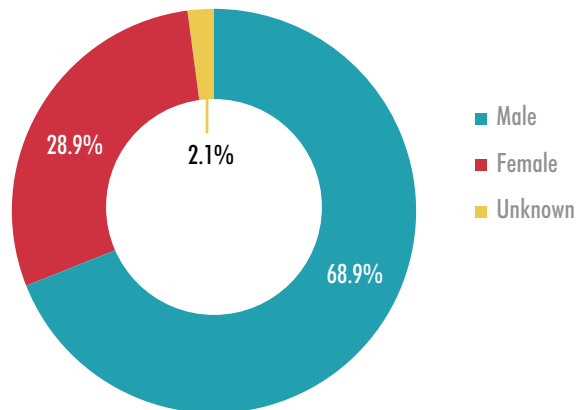
## Drivers Involved in Crashes by Gender

GENDER	LICENSED DRIVERS	DRIVERS INVOLVED IN ALL CRASHES	DRIVERS INVOLVED IN FATAL CRASHES
Male	1,893,373	114,650	774
Female	1,997,090	103,709	325
Unknown	0	12,015	24
<b>TOTAL</b>	<b>3,890,463</b>	<b>230,374</b>	<b>1,123</b>

### Gender of Drivers Involved in All Crashes



### Gender of Drivers Involved in Fatal Crashes



# CRASH LOCATION

## Quick Facts

The number of RURAL fatalities increased 5.26% from 2012 to 2013.

The number of URBAN fatalities decreased 11.73% from 2012 to 2013.

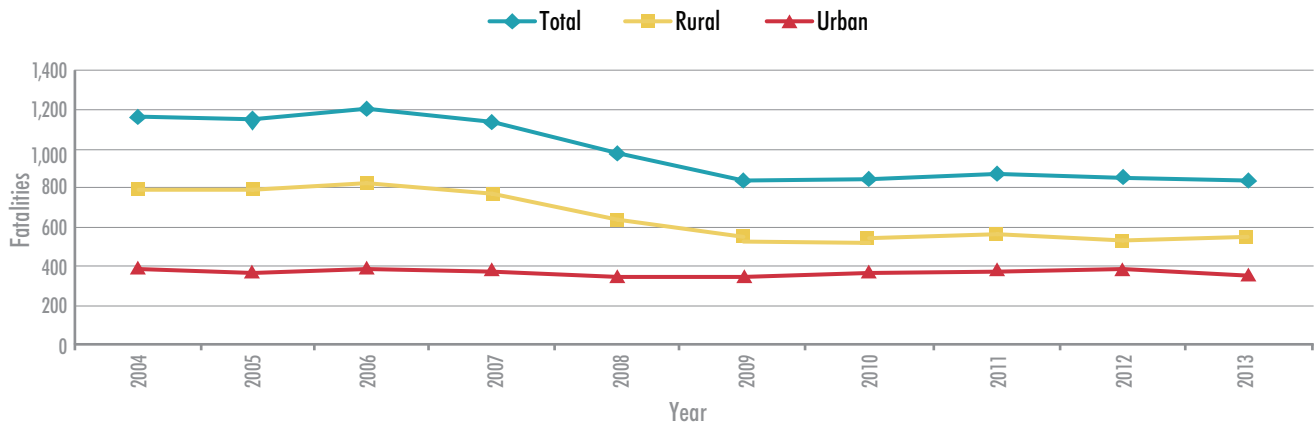
The number of RURAL fatalities decreased 33.11 percent from 2004 to 2013.

The number of URBAN fatalities decreased 11.73 percent from 2004 to 2013.

## Rural Vs. Urban Fatalities Ten-Year Data

YEAR	FATALITIES		
	STATE TOTAL	RURAL	URBAN
2004	1,154	779	375
2005	1,149	777	372
2006	1,208	833	375
2007	1,110	751	359
2008	964	647	317
2009	848	526	322
2010	862	514	348
2011	899	542	357
2012	870	495	375
2013	852	521	331

## Rural Vs. Urban Fatalities Ten-Year Data



## Rural Locale

LOCALE TYPE	CRASHES	
Open Country	25,537	82.3%
Residential	3,148	10.1%
Business	1,980	6.4%
Industrial	136	0.4%
School/Playground	158	0.5%
Other	81	0.3%
Unknown	0	0.0%
<b>TOTAL</b>	<b>31,040</b>	<b>100.0%</b>

## Urban Locale

LOCALE TYPE	CRASHES	
Business	55,978	58.4%
Residential	23,489	24.5%
Open Country	10,830	11.3%
School/Playground	2,184	2.3%
Industrial	2,007	2.1%
Other	1,334	1.4%
Unknown	0	0.0%
<b>TOTAL</b>	<b>95,822</b>	<b>100.0%</b>

## Crash Location

LOCATION	CRASHES	
On Roadway	97,380	76.8%
Off Roadway	19,759	15.6%
Intersection	4,684	3.7%
Median	1,472	1.1%
Private Property	32	0.0%
Driveway	14	0.0%
Other	3,521	2.8%
<b>TOTAL</b>	<b>126,862</b>	<b>100.0%</b>

## Causal Driver Residence

RESIDENCE WITHIN 25 MILES	
Yes	71.4%
No	18.3%
Unknown	10.3%

Most crashes occur in urban business and residential areas or in open rural areas within 25 miles of home.

# CRASH ENVIRONMENT

## Traffic Control

CONTROL TYPE	CRASHES		FATALITIES	
	Count	Percentage	Count	Percentage
No Controls Present	59,946	47.25%	426	50.00%
Traffic Signal	28,103	22.15%	46	5.46%
No Passing Zone	10,863	8.56%	235	27.55%
Stop Sign	10,774	8.50%	61	7.13%
Yield Sign	3,061	2.41%	1	0.12%
Railroad Device	155	0.12%	4	0.36%
Other	4,054	3.20%	55	6.41%
Not Stated	9,906	7.81%	25	2.97%

## Road Condition

CONDITION	CRASHES		FATALITIES	
	Count	Percentage	Count	Percentage
Dry	94,773	74.71%	679	79.69%
Wet	24,958	19.67%	149	17.49%
Muddy	94	0.07%	0	0.00%
Icy/Slushy	695	0.55%	1	0.12%
Other/Unknown	6,342	5.00%	23	2.70%

## Light Condition

CONDITION	CRASHES		FATALITIES	
	Count	Percentage	Count	Percentage
Day	90,604	71.42%	425	49.88%
Dark	15,064	11.87%	292	34.20%
Streetlights	15,448	12.18%	104	12.23%
Dusk	3,432	2.71%	12	1.43%
Dawn	1,492	1.18%	7	0.83%
Not Stated	822	0.65%	12	1.43%

## Weather

WEATHER	CRASHES		FATALITIES	
	Count	Percentage	Count	Percentage
Clear	78,823	62.13%	555	65.08%
Cloudy	27,085	21.35%	176	20.67%
Rain	19,385	15.28%	99	11.64%
Snow/Sleet	538	0.43%	0	0.00%
Fog	624	0.49%	13	1.54%
Other	407	0.32%	9	1.07%

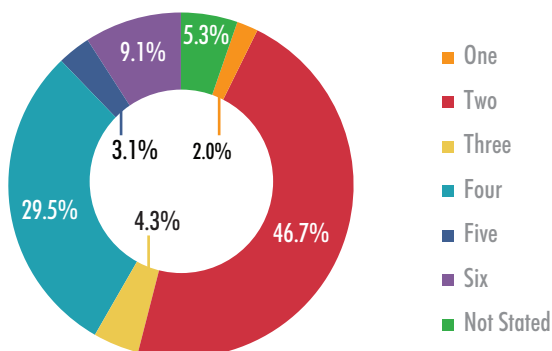
## Road Curvature and Grade

CURVE/GRADE	CRASHES		FATALITIES	
	Count	Percentage	Count	Percentage
Level	83,093	65.50%	415	48.71%
Downgrade	11,990	9.45%	79	9.27%
Upgrade	9,376	7.39%	72	8.45%
Curve on Hill	7,873	6.21%	132	15.49%
Level Curve	6,999	5.52%	114	13.38%
Hillcrest or Sag	1,248	0.98%	17	2.00%
Other/Unknown	6,283	4.95%	23	2.70%

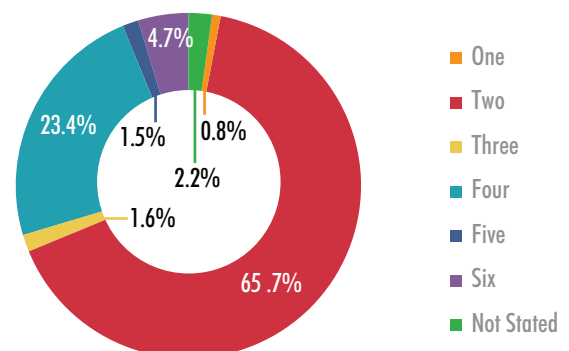
## Number of Lanes

LANES	CRASHES		FATALITIES	
	Count	Percentage	Count	Percentage
Two	59,307	46.75%	560	65.68%
Four	37,403	29.48%	199	23.40%
Six or More	11,518	9.08%	40	4.63%
Three	5,428	4.28%	14	1.66%
Five	3,962	3.12%	13	1.54%
One	2,569	2.03%	7	0.83%
Not Stated	6,675	5.26%	19	2.26%

## All Crashes per Number of Lanes



## Fatalities per Number of Lanes

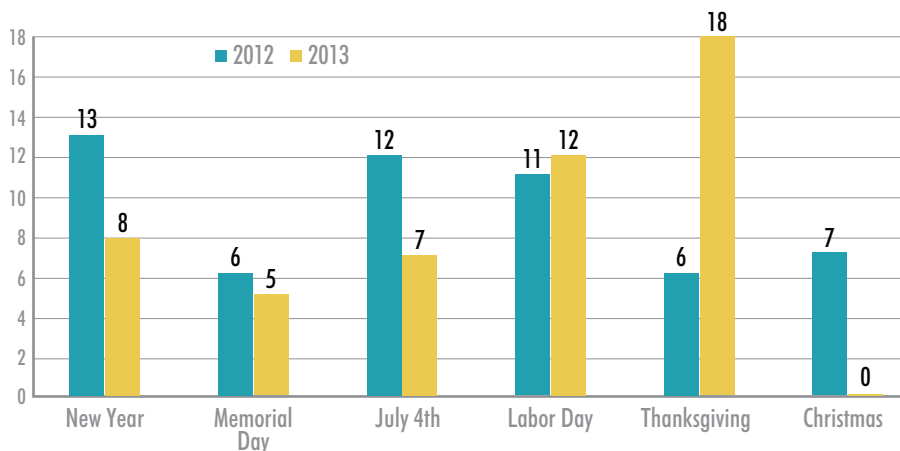


# HOLIDAY CRASH STATISTICS

## Comparative Holiday Crash Statistics

HOLIDAY	YEAR	FATALITIES	PERIOD
New Year	2012	13	6 PM, Fri., December 30, 2011 until 11:59 PM, Mon., January 2, 2012 (78 hrs)
	2013	8	6 PM, Fri., December 28, 2012 until 11:59 PM, Tue., January 1, 2013 (102 hrs)
Memorial Day	2012	6	6 PM, Fri., May 25, 2012 until 11:59 PM, Mon., May 28, 2012 (78 hrs)
	2013	5	6 PM, Fri., May 24, 2013 until 11:59 PM, Mon., May 27, 2013 (78 hrs)
July 4th	2012	12	6 PM, Mon., July 2, 2012 until 11:59 PM, Thu., July 5, 2012 (78 hrs)
	2013	7	6 PM, Wed., July 3, 2013 until 11:59 PM, Sun., July 7, 2013 (102 hrs)
Labor Day	2012	11	6 PM, Fri., August 31, 2012 until 11:59 PM, Mon., September 3, 2012 (78 hrs)
	2013	12	6 PM, Fri., August 30, 2013 until 11:59 PM, Mon., September 2, 2013 (78 hrs)
Thanksgiving	2012	6	6 PM, Wed., November 21, 2012 until 11:59 PM, Sun., November 25, 2012 (102 hrs)
	2013	18	6 PM, Wed., November 27, 2013 until 11:59 PM, Sun., December 1, 2013 (102 hrs)
Christmas	2012	7	6 PM, Fri., December 21, 2012 until 11:59 PM, Tue., December 25, 2012 (102 hrs)
	2013	0	6 PM, Tue., December 24, 2013 until 11:59 PM, Wed., December 25, 2013 (30 hrs)

## Holiday Fatalities

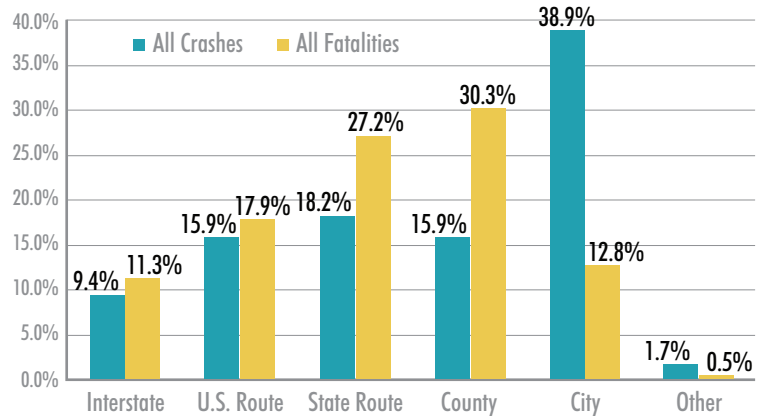


# TYPE OF ROADWAY

## Total for State

ROAD TYPE	CRASHES		FATALITIES	
	Count	Percentage	Count	Percentage
Interstate	11,986	9.4%	96	11.3%
U.S. Route	20,112	15.9%	153	17.9%
State Route	23,107	18.2%	232	27.2%
County	20,194	15.9%	258	30.3%
City	49,337	38.9%	109	12.8%
Other	2,126	1.7%	4	0.5%
<b>TOTAL</b>	<b>126,862</b>	<b>100.0%</b>	<b>852</b>	<b>100.0%</b>

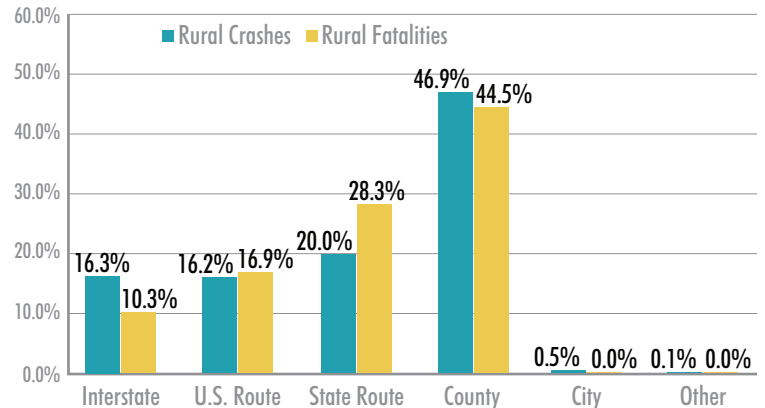
## Type of Roadway



## Rural Areas

ROAD TYPE	CRASHES		FATALITIES	
	Count	Percentage	Count	Percentage
Interstate	5,066	16.3%	53	10.3%
U.S. Route	5,032	16.2%	88	16.9%
State Route	6,204	20.0%	148	28.3%
County	14,543	46.9%	232	44.5%
City	165	0.5%	0	0.0%
Other	30	0.1%	0	0.0%
<b>TOTAL</b>	<b>31,040</b>	<b>100.0%</b>	<b>521</b>	<b>100.0%</b>

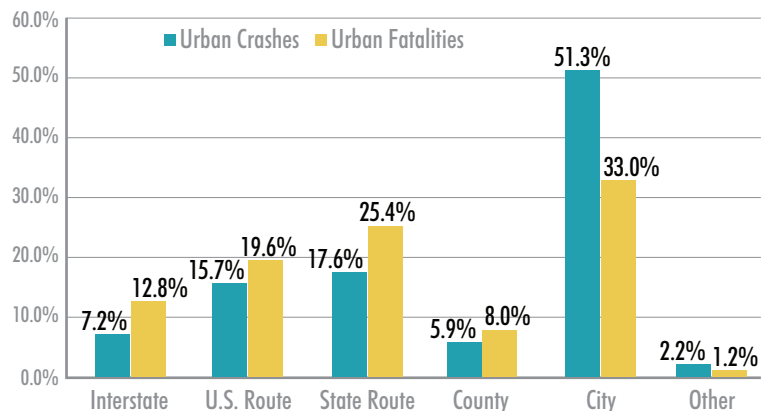
## Rural Crash Statistics



## Urban Areas

ROAD TYPE	CRASHES		FATALITIES	
	Count	Percentage	Count	Percentage
Interstate	6,920	7.2%	43	12.8%
U.S. Route	15,080	15.7%	65	19.6%
State Route	16,903	17.6%	84	25.4%
County	5,651	5.9%	26	8.0%
City	49,172	51.3%	109	33.0%
Other	2,096	2.2%	4	1.2%
<b>TOTAL</b>	<b>95,822</b>	<b>100.0%</b>	<b>331</b>	<b>100.0%</b>

## Urban Crash Statistics





# ALCOHOL AND DRUG INVOLVEMENT

## Number of Drivers Influenced by Alcohol or Drugs

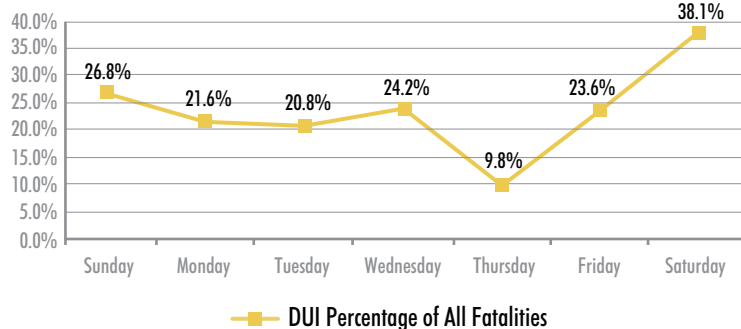
AGE	ALL DRIVERS*	MALE	FEMALE	UNKNOWN
0-14	0	0	0	0
15-19	505	329	176	0
20-24	1,364	952	409	3
25-29	1,185	815	369	1
30-34	1,079	732	346	1
35-39	941	630	310	1
40-44	847	564	282	1
45-49	744	506	235	3
50-54	709	520	187	2
55-59	541	365	176	0
60-64	323	233	90	0
65-69	183	135	48	0
70-74	93	65	28	0
75-over	112	42	25	45
Unknown	564	79	8	477
<b>TOTAL</b>	<b>9,190</b>	<b>5,967</b>	<b>2,689</b>	<b>534</b>

\*All reported drivers who were DUI, not just involved in crashes.

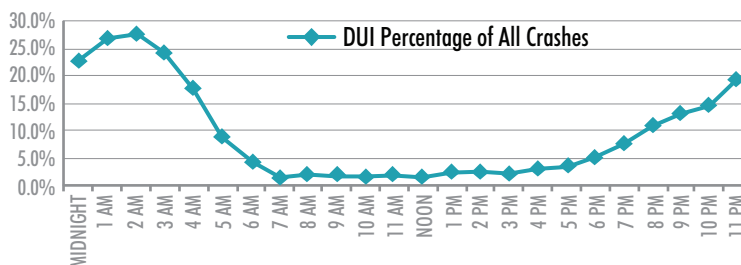
## Quick Fact

On average, less than 1 percent of crashes end in a fatality. However, for DUI crashes, the probability is much greater. The proportion of fatality crashes involving DUI (3 percent) is five times that of crashes in general (0.6 percent), as reported in 2013.

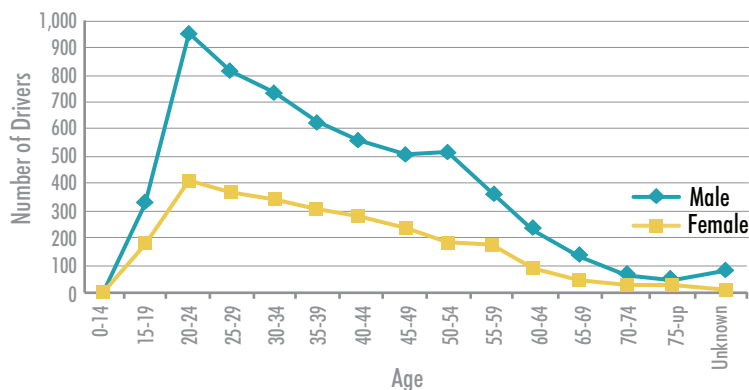
## Percentage of DUI Fatalities by Day



## Percentage of DUI Crashes by Time

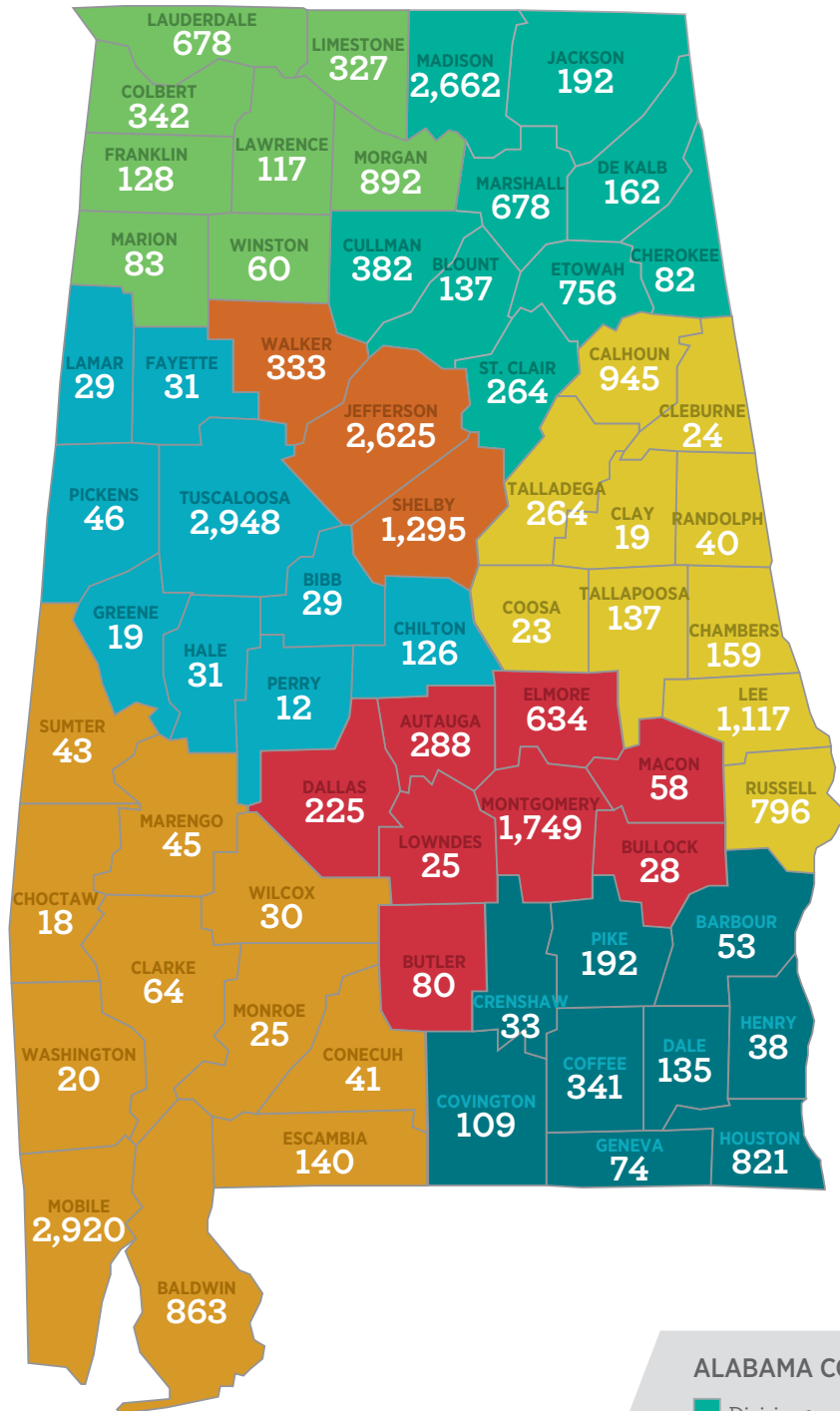


## Driver Age and Alcohol Involvement



# INTERSECTION CRASHES BY COUNTY

Total intersection-related crashes: 28,082

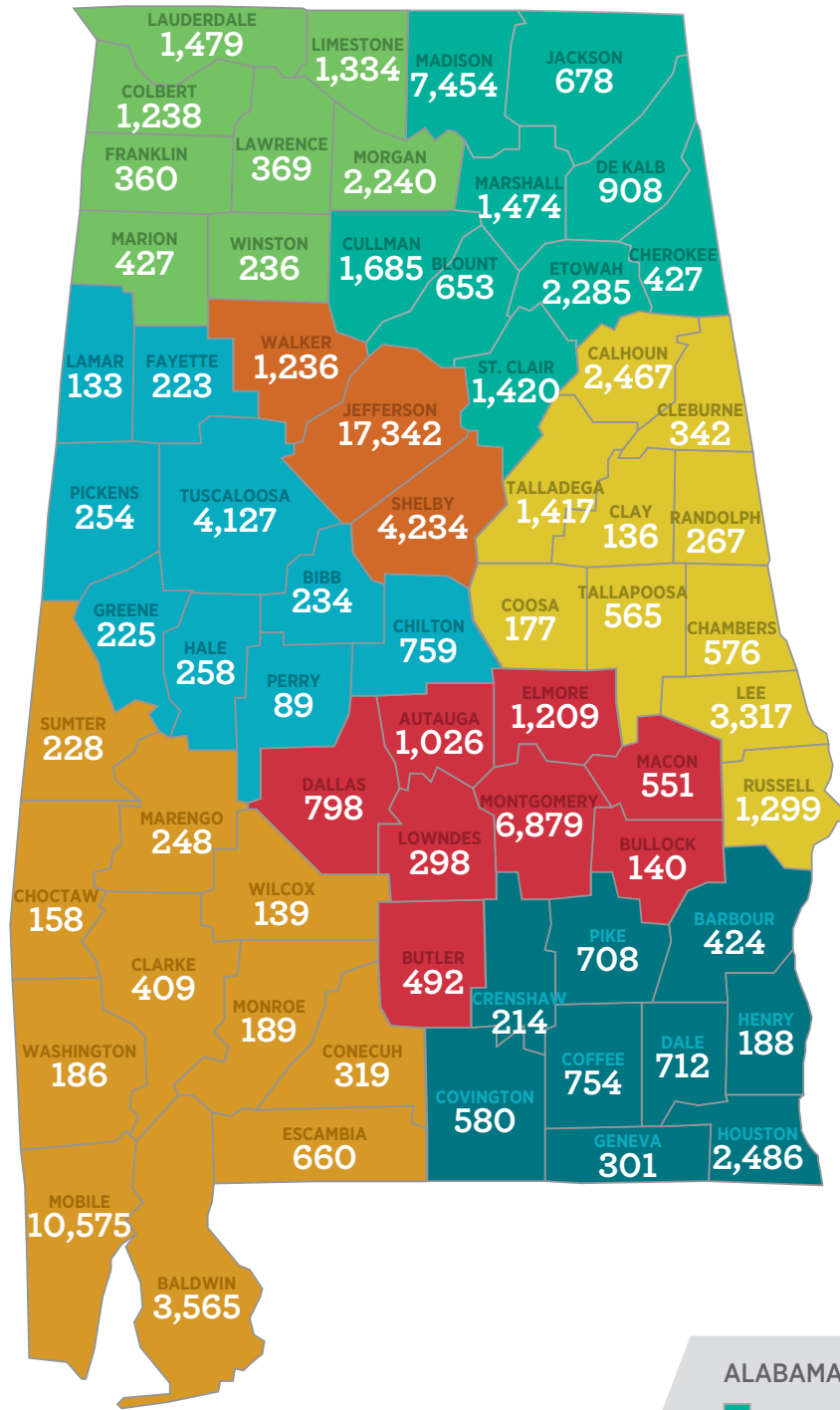


## ALABAMA COUNTY DIVISION KEY

- Division 1
- Division 5
- Division 2
- Division 6
- Division 3
- Division 7
- Division 4
- Southwest Region

# NON-INTERSECTION CRASHES BY COUNTY

Total non-intersection-related crashes: 98,780



## ALABAMA COUNTY DIVISION KEY

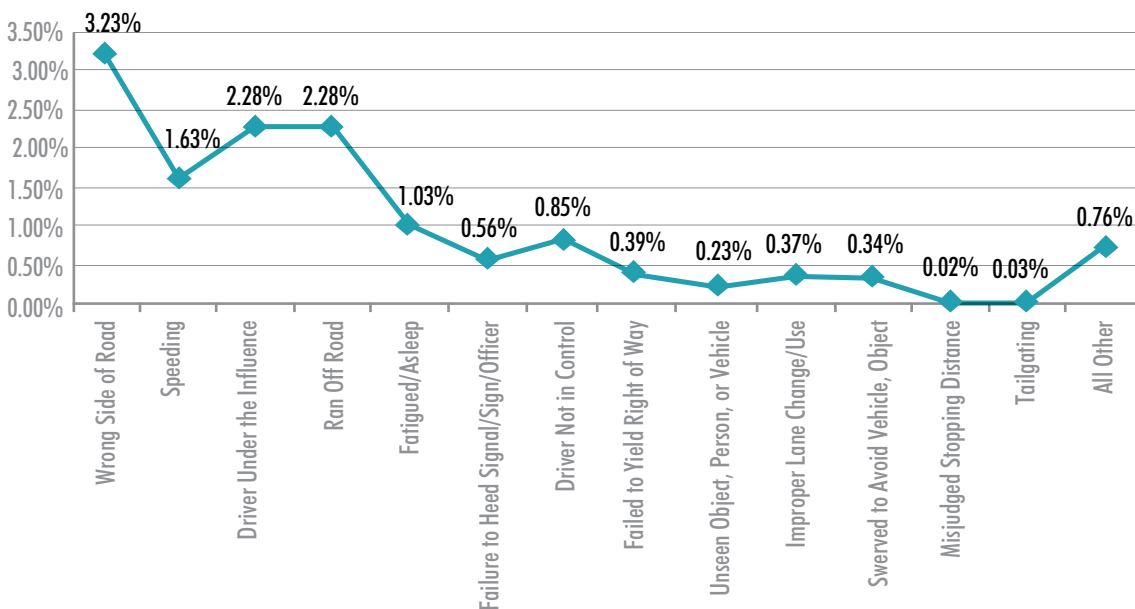
- Division 1
- Division 5
- Division 2
- Division 6
- Division 3
- Division 7
- Division 4
- Southwest Region

## Contributing Circumstances

DRIVER-CONTRIBUTING CIRCUMSTANCE	ALL CRASHES	FATAL CRASHES
Wrong Side of Road	713	23
Speeding	7,241	118
Driver Under the Influence	4,603	105
Ran Off Road	2,802	64
Fatigued/Asleep	2,029	21
Failure to Heed Sign/Signal/Officer	4,780	27
Driver Not in Control	1,174	10
Failed to Yield Right of Way	19,309	76
Unseen Object, Person, or Vehicle	9,542	22
Improper Lane Change/Use	8,685	32
Swerved to Avoid Vehicle, Object	6,417	22
Misjudged Stopping Distance	12,245	3
Tailgating	17,022	5
All Other	30,300	229
<b>TOTAL</b>	<b>126,862</b>	<b>757</b>

There may be multiple contributing circumstances in each crash. The table above shows the primary cause determined by the officer reporting the crash.

## Percentage of Fatal Crashes to All Crashes per Specific Driver-Contributing Circumstances



# MOTORCYCLE CRASH STATISTICS

## Ten-Year Data

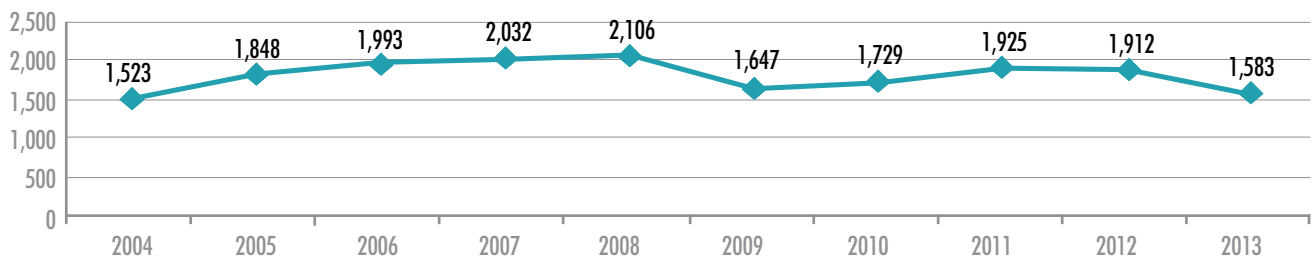
YEAR	CRASHES INVOLVING MOTORCYCLES	INJURIES	FATALITIES
2004	1,523	1,082	75
2005	1,848	1,347	61
2006	1,993	1,428	105
2007	2,032	1,426	84
2008	2,106	1,495	98
2009	1,647	1,205	77
2010	1,729	1,319	86
2011	1,925	1,438	97
2012	1,912	1,477	92
2013	1,583	1,173	76

## Motorcycle-Caused Crashes by Age (Includes Motor Scooters and Mopeds)

AGE	NUMBER OF CRASHES	INJURIES	FATALITIES
0-14	4	3	0
15-19	70	49	1
20-24	157	111	12
25-29	133	99	4
30-34	102	77	2
35-39	94	54	5
40-44	118	97	8
45-49	106	83	5
50-54	95	81	3
55-59	77	60	4
60-64	67	54	1
65-69	42	33	2
70-74	17	14	0
75-up	13	9	1
Unknown	19	1	0
<b>TOTAL</b>	<b>1,114</b>	<b>825</b>	<b>48</b>

The numbers above will be different from the table on the left because this table reflects crashes CAUSED by motorcycles, not all crashes involving motorcycles.

## Motorcycle-Involved Crashes Ten-Year Data



# SAFETY RESTRAINT USAGE

## Safety Restraint Usage

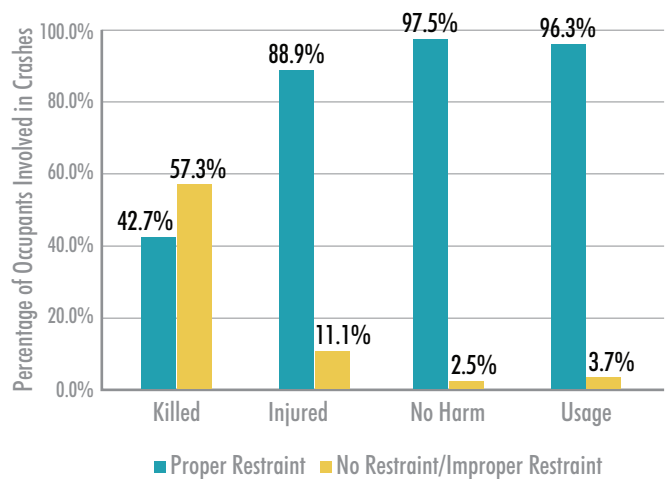
RESTRAINT USED	SEVERITY	DRIVER		FRONT SEAT PASSENGER		BACK SEAT PASSENGER		TOTALS	
		Count	Percentage	Count	Percentage	Count	Percentage	Count	Percentage
Wearing Lap and Shoulder Belts	Killed	202	0.10%	36	0.11%	21	17.00%	259	0.11%
	Injured	22,051	11.27%	5,159	15.72%	1,511	11.81%	28,721	11.90%
	No Harm	173,509	88.63%	27,625	84.17%	11,260	88.02%	212,394	87.99%
	Subtotal	195,762	100.00%	32,820	100.00%	12,792	100.00%	241,374	100.00%
Wearing Lap Belt Only	Killed	0	0.00%	1	0.32%	1	0.12%	2	0.11%
	Injured	71	11.31%	53	17.10%	103	12.38%	227	12.83%
	No Harm	557	88.69%	256	82.58%	728	87.50%	1,541	87.06%
	Subtotal	628	100.00%	310	100.00%	832	100.00%	1,770	100.00%
Wearing Shoulder Belt Only	Killed	0	0.00%	0	0.00%	0	0.00%	0	0.00%
	Injured	79	14.96%	18	16.22%	4	7.84%	101	14.64%
	No Harm	449	85.04%	93	83.78%	47	92.16%	589	85.36%
	Subtotal	528	100.00%	111	100.00%	51	100.00%	690	100.00%
None Used	Killed	263	5.63%	61	5.14%	21	2.00%	345	4.99%
	Injured	2,168	46.36%	659	55.47%	448	42.75%	3,275	47.38%
	No Harm	2,245	48.01%	468	39.39%	579	55.25%	3,292	47.63%
	Subtotal	4,676	100.00%	1,188	100.00%	1,048	100.00%	6,912	100.00%
Unknown	Killed	26	0.43%	4	0.50%	1	0.24%	31	0.43%
	Injured	1,072	17.72%	234	29.40%	124	29.31%	1,430	19.68%
	No Harm	4,950	81.85%	558	70.10%	298	70.45%	5,806	79.89%
	Subtotal	6,048	100.00%	796	100.00%	423	100.00%	7,267	100.00%

### Quick Fact

According to the crash reports, overall, only 3.7 percent of people involved in crashes were not using safety restraints; however, over 57 percent of all fatalities were not restrained.

97.5 percent of people involved in crashes but not harmed were wearing their seat belts.

### Safety Restraint Usage

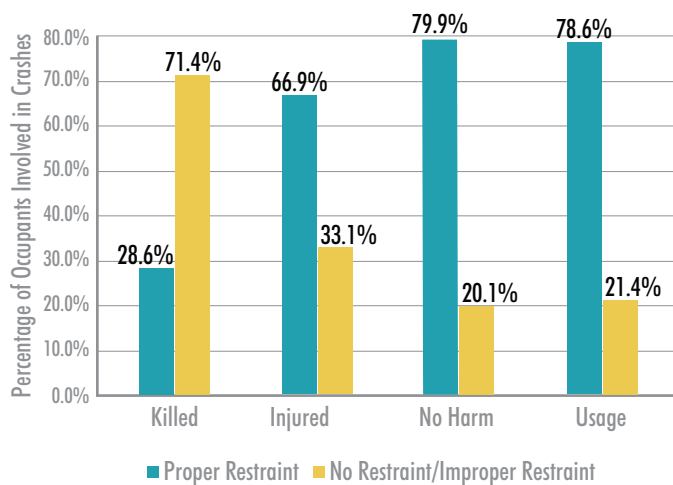


## Child Restraint Usage\* (Under 6 Years Old)

TYPE	SEVERITY	FRONT SEAT OCCUPANT		BACK SEAT OCCUPANT		TOTALS	
		Count	Percentage	Count	Percentage	Count	Percentage
Child Restraint Used	Killed	1	0.39%	3	0.05%	4	0.06%
	Injured	33	12.84%	505	7.76%	538	7.95%
	No Harm	223	86.77%	6,002	92.19%	6,225	91.99%
	Subtotal	257	100.00%	6,510	99.99%	6,767	100.00%
Child Restraint Used Improperly	Killed	0	0.00%	8	0.53%	8	0.46%
	Injured	46	20.54%	162	10.81%	208	12.07%
	No Harm	178	79.46%	1,329	88.66%	1,507	87.46%
	Subtotal	224	100.00%	1,499	100.00%	1,723	100.00%
None Used	Killed	0	0.00%	2	2.25%	2	1.72%
	Injured	13	48.15%	45	50.56%	58	50.00%
	No Harm	14	51.85%	42	47.19%	56	48.28%
	Subtotal	27	100.00%	89	100.00%	116	100.00%
Unknown	Killed	0	0.00%	1	0.78%	1	0.72%
	Injured	1	10.00%	40	31.01%	41	29.50%
	No Harm	9	90.00%	88	68.21%	97	69.78%
	Subtotal	10	100.00%	129	99.99%	139	100.00%

\*Seatbelt use for nonfatal injured passengers may be overestimated because reporting officers have no way to make a direct observation. Additionally, 31 fatalities had unknown restraint use.

## Child Restraint Usage



## Quick Fact

According to the crash reports, overall, 21.4 percent of children involved in crashes were not using a child restraint; however, over 71 percent of fatalities were not properly restrained.

About 80 percent of children involved in crashes but not harmed were protected by child restraints.

# BICYCLE CRASH STATISTICS

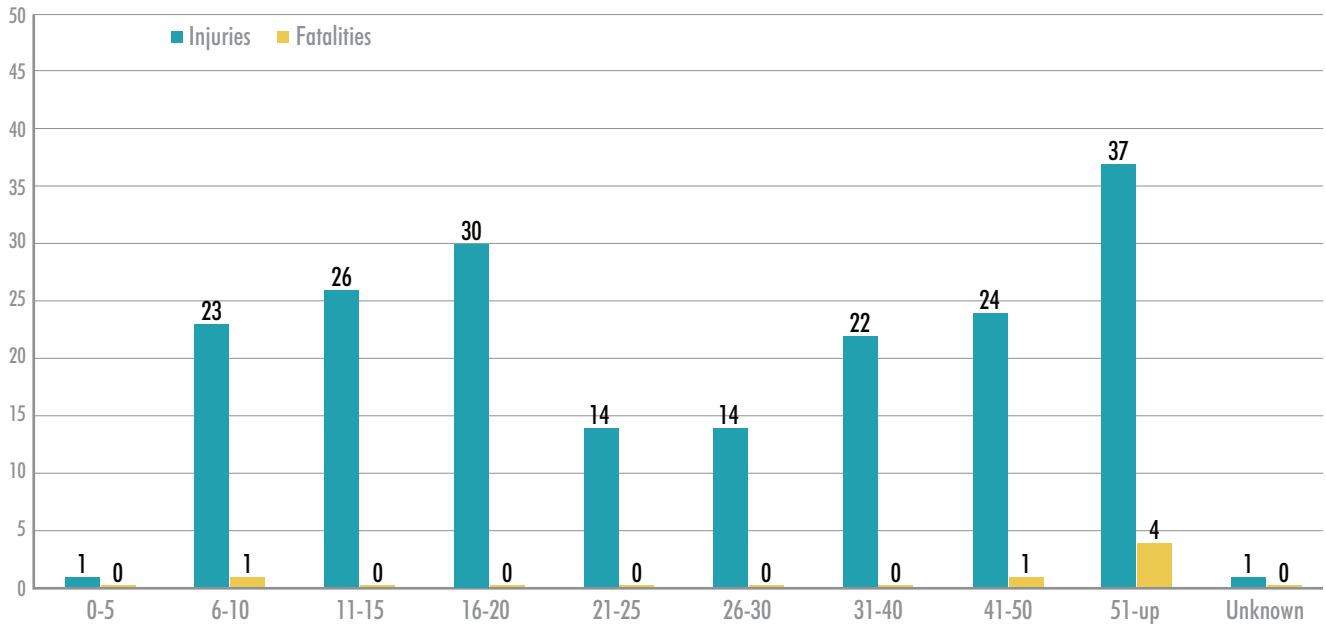
## Ten-Year Data

YEAR	CRASHES	INJURIES	FATALITIES
2004	277	218	6
2005	275	215	12
2006	252	185	9
2007	266	193	9
2008	236	182	4
2009	208	167	6
2010	232	169	5
2011	280	203	5
2012	278	225	9
2013	264	192	6

## Bicyclists Involved in Crashes by Age

AGE	CRASHES	INJURIES	FATALITIES
0-5	4	1	0
6-10	26	23	1
11-15	30	26	0
16-20	37	30	0
21-25	20	14	0
26-30	21	14	0
31-40	30	22	0
41-50	38	24	1
51-up	53	37	4
Unknown	5	1	0
<b>TOTAL</b>	<b>264</b>	<b>192</b>	<b>6</b>

## Bicyclist Injuries and Fatalities by Age



## Quick Fact

In 2013, children aged 15 and under accounted for 26 percent of bicycle crash injuries.



# PEDESTRIAN CRASH STATISTICS

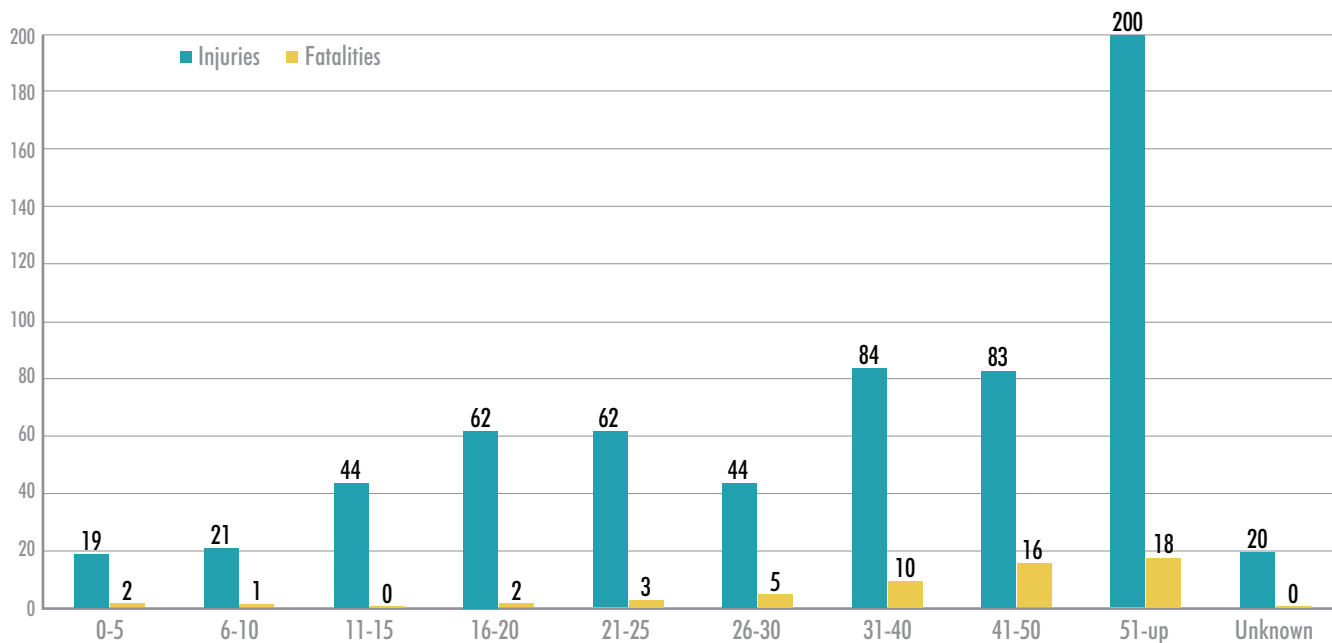
## Ten-Year Data

YEAR	CRASHES	INJURIES	FATALITIES
2004	639	603	81
2005	611	562	74
2006	637	583	81
2007	595	549	69
2008	525	468	72
2009	584	511	65
2010	677	578	63
2011	692	589	84
2012	753	651	80
2013	744	639	57

## Pedestrians Involved in Crashes by Age

AGE	CRASHES	INJURIES	FATALITIES
0-5	23	19	2
6-10	22	21	1
11-15	49	44	0
16-20	73	62	2
21-25	71	62	3
26-30	52	44	5
31-40	99	84	10
41-50	106	83	16
51-up	224	200	18
Unknown	25	20	0
<b>TOTAL</b>	<b>744</b>	<b>639</b>	<b>57</b>

## Pedestrian Injuries and Fatalities by Age



## Quick Fact

From 2012 to 2013, the number of pedestrian injuries decreased 1.8 percent. The number of pedestrian fatalities decreased 28.8 percent.

# TRAIN INVOLVED CRASH STATISTICS

## Quick Fact

The number of railroad crashes and fatalities increased in 2013. However, the number of injuries resulting from these crashes decreased slightly.

## Definition

Driver behavior issues include ignoring flashing lights or other active warning devices, passing through barrier gates, and driving around already lowered gates/failure to observe passive warning devices.

According to NHTSA, nationwide, a motorist is almost 20 times more likely to die in a crash involving a train than in a collision involving another motor vehicle.

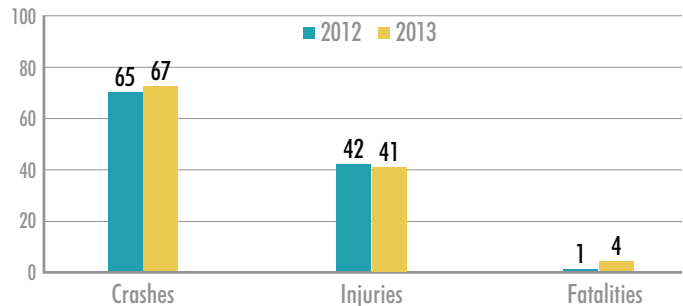
## Ten-Year Data

YEAR	CRASHES	INJURIES	FATALITIES
2004	92	36	10
2005	90	35	11
2006	100	31	10
2007	81	25	14
2008	65	36	5
2009	51	14	2
2010	48	45	6
2011	59	47	8
2012	65	42	1
2013	67	41	4

## Train-Involved Crashes by Severity

CRASH SEVERITY	CRASHES
Property Damage	37
Injury	24
Fatal	3
Unknown	3
<b>TOTAL</b>	<b>67</b>

## Railroad Crashes



# WORK ZONE CRASH STATISTICS

## Ten-Year Data

YEAR	INJURY CRASHES	FATAL CRASHES
2004	725	24
2005	654	40
2006	518	29
2007	478	31
2008	472	16
2009	518	9
2010	621	19
2011	585	19
2012	477	23
2013	541	22

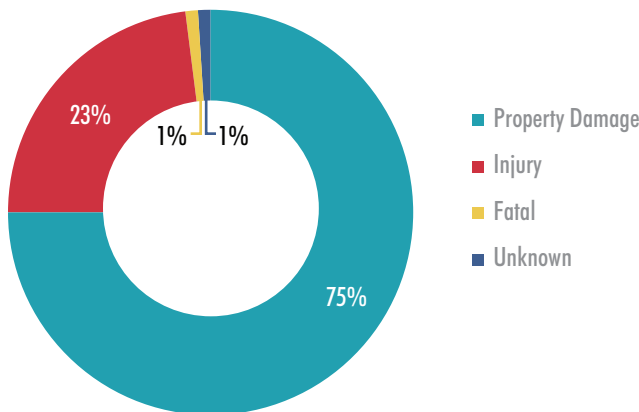
## Quick Fact

Drivers need to be particularly alert when traveling through highway work zones. When a road is not in its usual condition due to construction, it is a good idea to slow down. Fines for speeding double in work zones when construction workers are present. Work zone crashes are dangerous to both highway workers and motorists. Most work zone crashes are rear-end collisions, resulting from speeding or inattentive driving.

## Work Zone Crashes by Severity

CRASH SEVERITY	CRASHES
Property Damage	1,755
Injury	541
Fatal	22
Unknown	28
<b>TOTAL</b>	<b>2,346</b>

## Work Zone Crashes



The Alabama Department of Transportation promotes Work Zone Awareness in April of each year. Alabama’s theme for Work Zone Awareness in 2013 was: “We’re All in this Together.”

# TRUCK CRASH STATISTICS

## Ten-Year Data

YEAR	TRUCKS INVOLVED IN CRASHES	INJURIES	FATALITIES
2004	10,993	2,990	169
2005	10,547	2,824	134
2006	9,810	2,588	142
2007	8,809	2,202	136
2008	7,546	1,769	132
2009	6,704	1,615	84
2010	7,898	2,002	113
2011	6,927	1,715	92
2012	5,798	1,562	90
2013	7,322	1,982	116

## Total for All Crashes with Truck Involvement

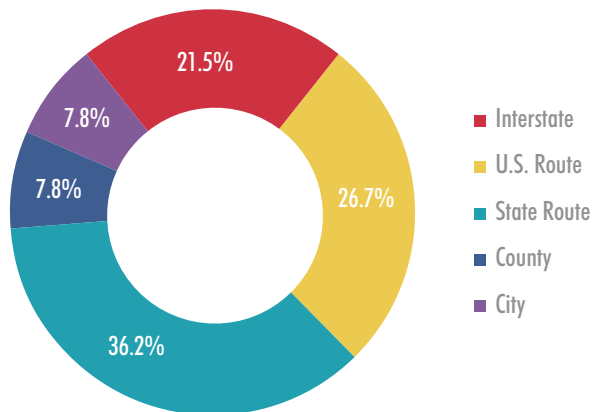
ROAD TYPE	CRASHES		FATALITIES	
Interstate	1,775	24.2%	25	21.5%
U.S. Route	1,430	19.5%	31	26.7%
State Route	1,432	19.6%	42	36.2%
County	759	10.4%	9	7.8%
City	1,815	24.8%	9	7.8%
Other	111	1.5%	0	0.0%
<b>TOTAL</b>	<b>7,322</b>	<b>100.0%</b>	<b>116</b>	<b>100.0%</b>

## Primary Cause of All Crashes with Truck Involvement\*

PRIMARY CAUSE	CRASHES	
Improper Lane Change or Use	838	11.4%
Failed to Yield Right of Way	836	11.4%
Unseen Object, Person, or Vehicle	646	8.8%
Tailgating	528	7.2%
Misjudged Stopping Distance	402	5.5%
Defective Equipment	317	4.3%
Avoiding Animal, Object, or Person	312	4.3%
Unknown	274	3.7%
Improper Backing	273	3.7%
Improper Turn	268	3.7%
Failure to Heed Sign/Signal	200	2.7%
Driving Too Fast for Conditions	194	2.7%
Crossed Median/Centerline	173	2.4%
Fatigued/Asleep	144	2.0%
Improper Passing	142	1.9%
Ran Off Road	140	1.9%
Driving Under the Influence	92	1.3%
Over the Speed Limit	63	0.9%
Driver Not in Control	31	0.4%
All Other	1,449	19.8%
<b>TOTAL</b>	<b>7,322</b>	<b>100.0%</b>

\*There is no inference as to whether the truck or another type of vehicle was the cause of the crash.

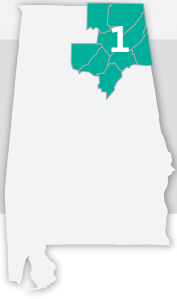
## Truck-Involved Fatalities by Road Type



## Definition

Truck is defined as anything heavier than a light truck or SUV, including: delivery truck, 18 wheeler, tow truck, dually, or work truck. Truck does not include a bus of any type.





# 2013 CRASHES BY COUNTY

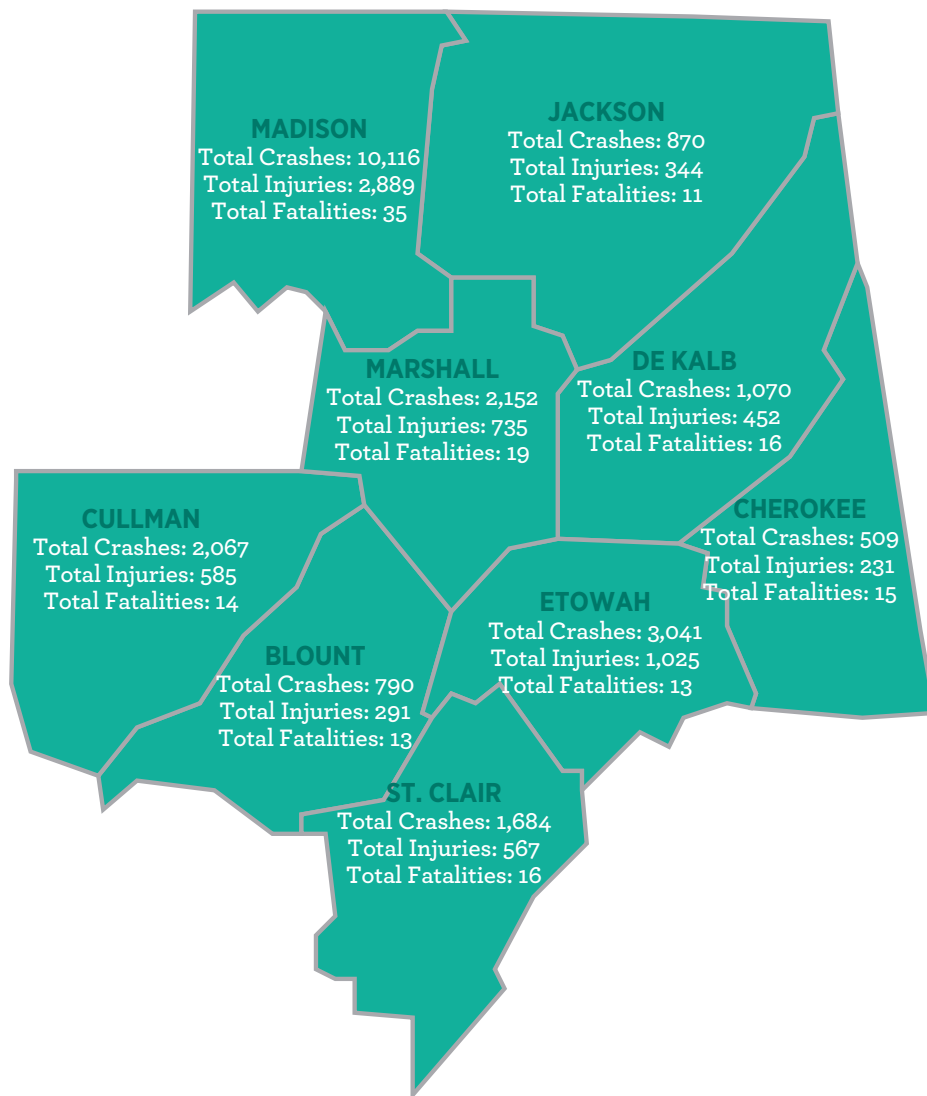
## Division One Statistics

### Totals

Total Crashes: 22,299

Total Injuries: 7,119

Total Fatalities: 152





## 2013 **CRASHES BY COUNTY**

### Division Two Statistics

#### Totals

Total Crashes: 10,310

Total Injuries: 3,245

Total Fatalities: 84





## 2013 CRASHES BY COUNTY

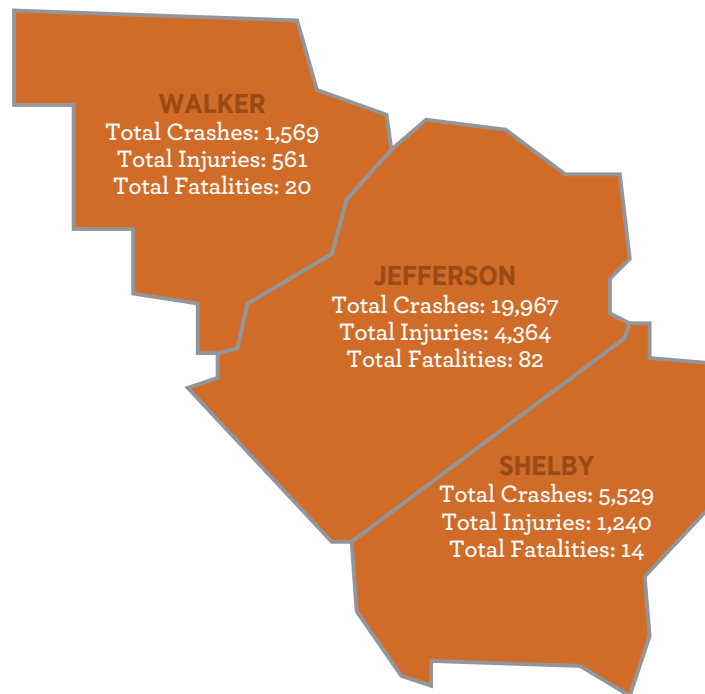
### Division Three Statistics

#### Totals

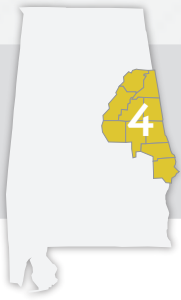
Total Crashes: 27,065

Total Injuries: 6,165

Total Fatalities: 116







# 2013 CRASHES BY COUNTY

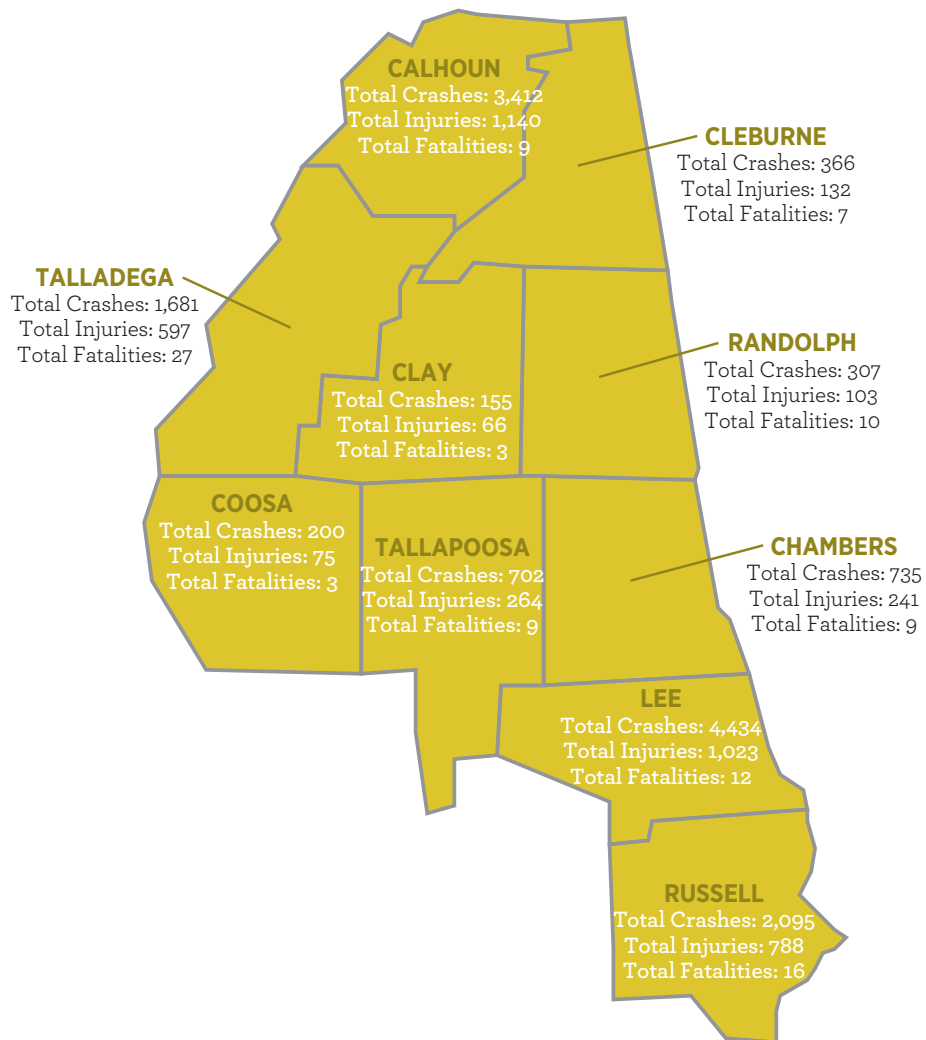
## Division Four Statistics

### Totals

Total Crashes: 14,087

Total Injuries: 4,429

Total Fatalities: 105





## 2013 CRASHES BY COUNTY

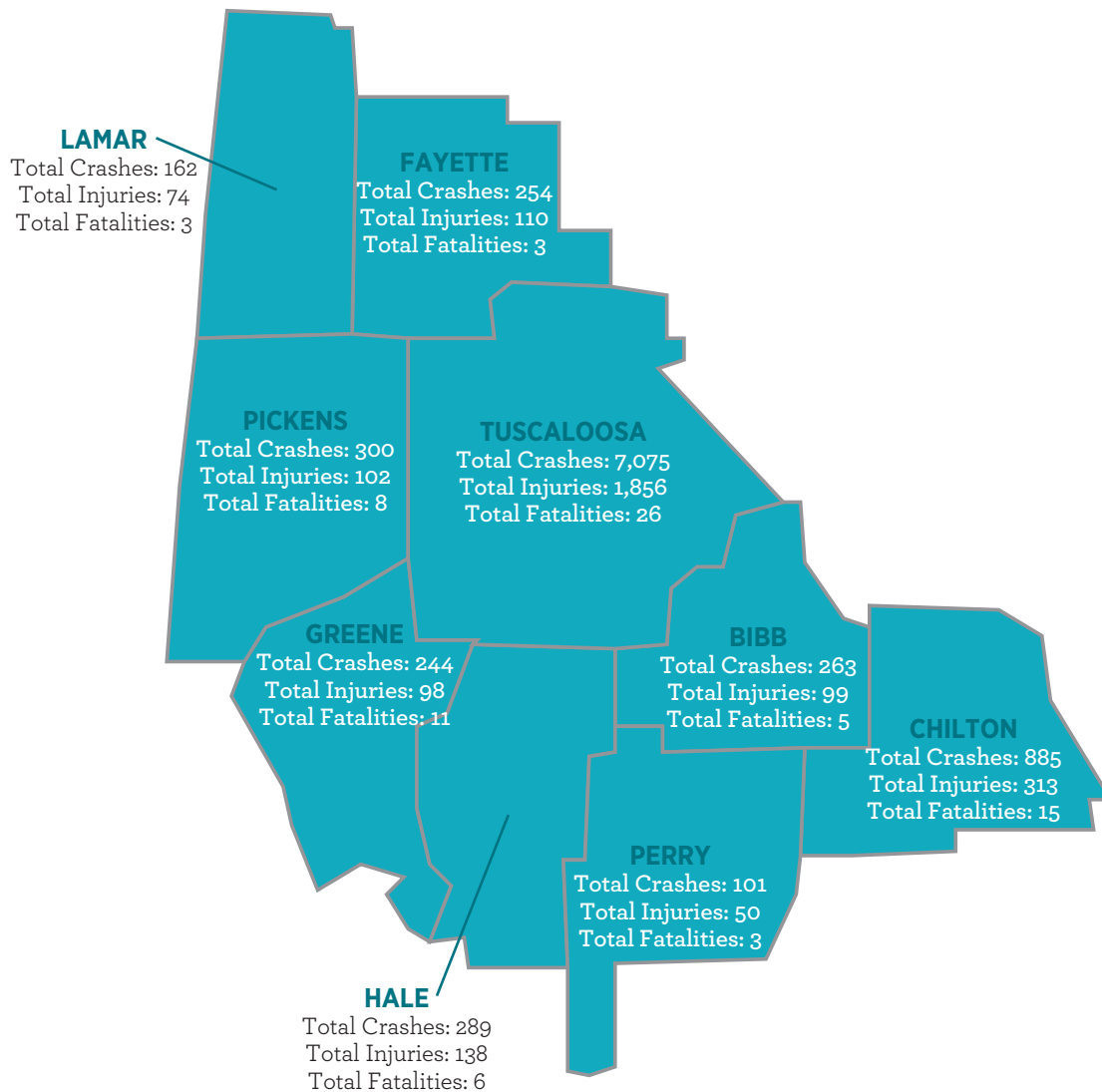
### Division Five Statistics

#### Totals

Total Crashes: 9,575

Total Injuries: 2,840

Total Fatalities: 80





## 2013 CRASHES BY COUNTY

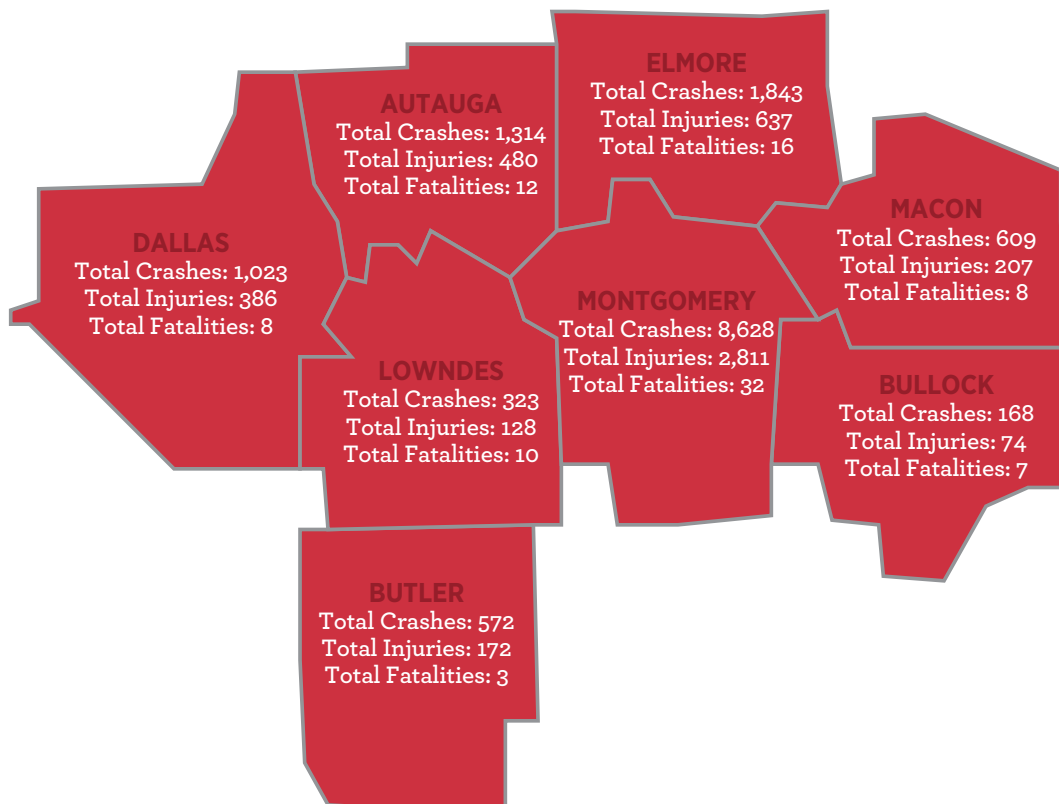
### Division Six Statistics

#### Totals

Total Crashes: 14,480

Total Injuries: 4,895

Total Fatalities: 96





# 2013 CRASHES BY COUNTY

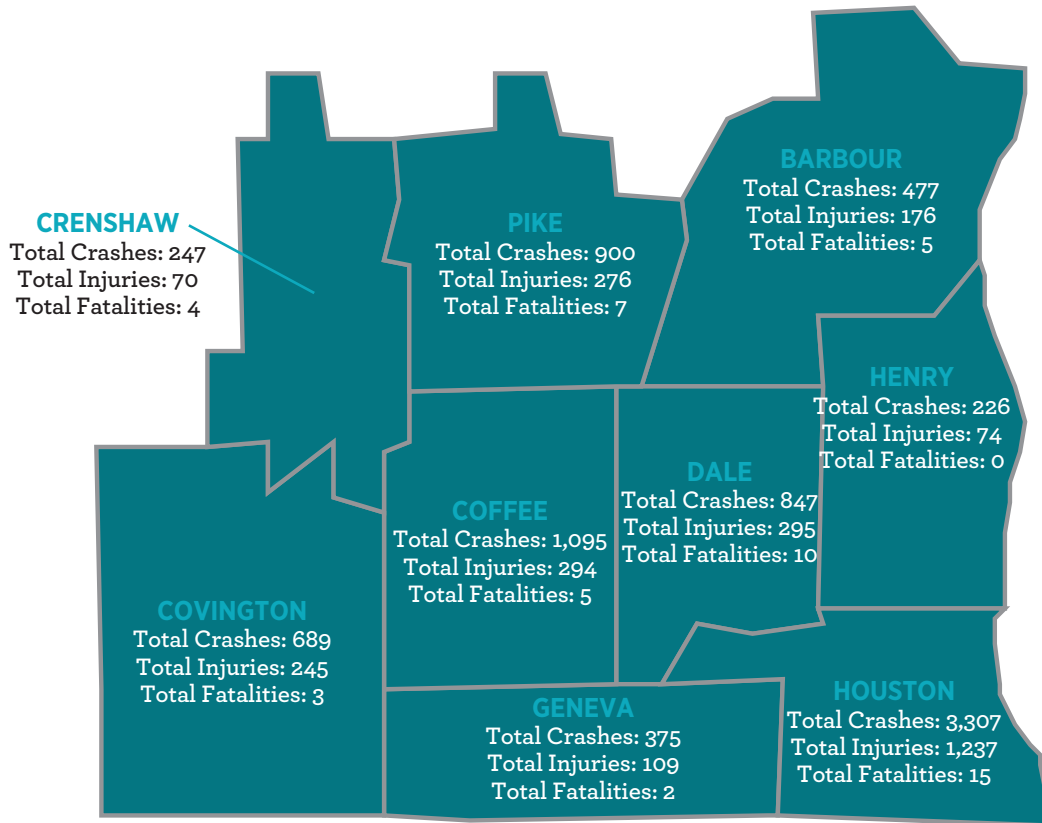
## Division Seven Statistics

### Totals

Total Crashes: 8,163

Total Injuries: 2,776

Total Fatalities: 51





# 2013 CRASHES BY COUNTY

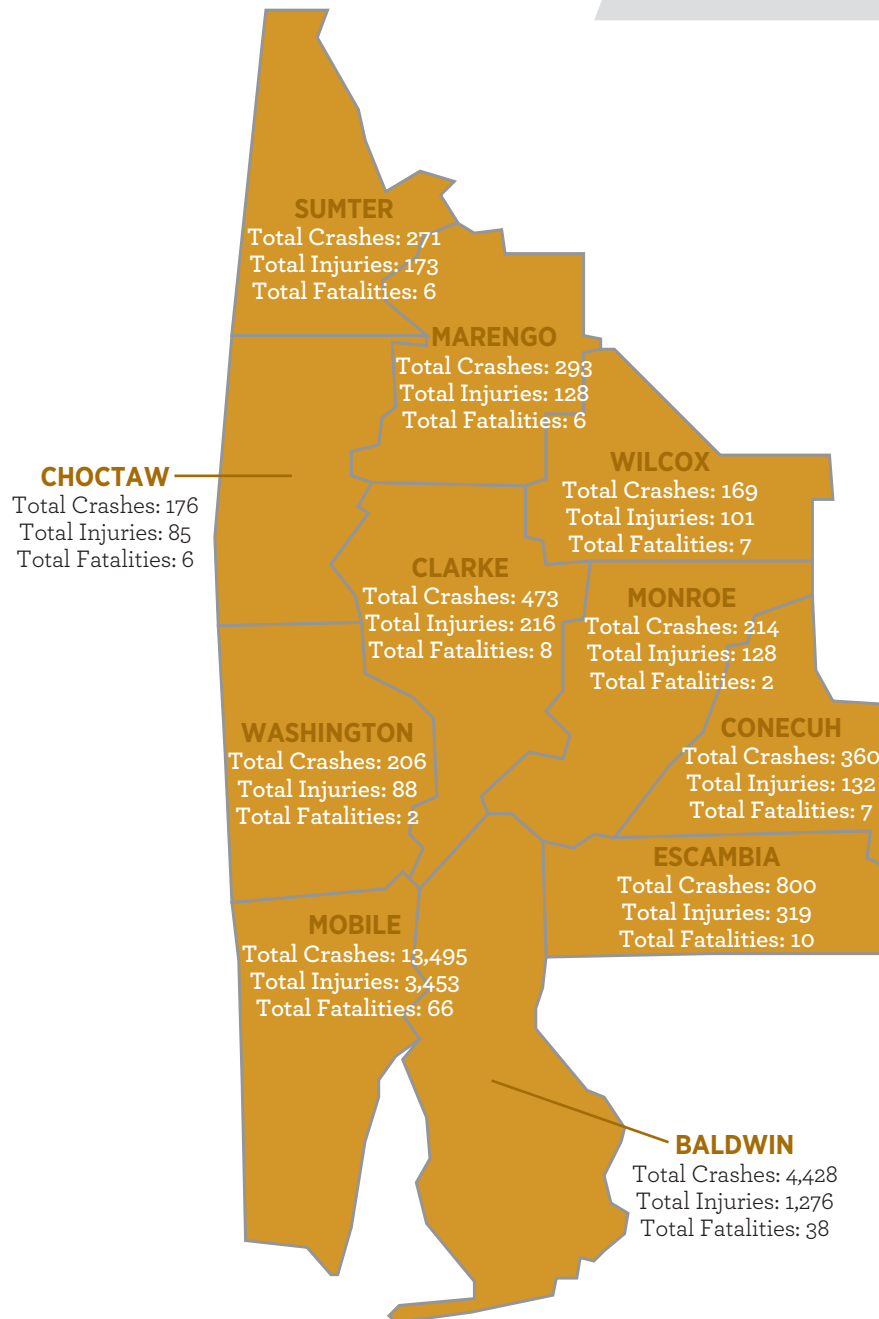
## Southwest Region Statistics

### Totals

Total Crashes: 20,885

Total Injuries: 6,099

Total Fatalities: 158



# COMPARATIVE COUNTY STATISTICS

## 2012 VS. 2013

COUNTY	TOTAL CRASHES FOR COUNTY						URBAN AREAS OF COUNTY						RURAL AREAS OF COUNTY					
	NUMBER OF CRASHES		PERSONS KILLED		PERSONS INJURED		NUMBER OF CRASHES		PERSONS KILLED		PERSONS INJURED		NUMBER OF CRASHES		PERSONS KILLED		PERSONS INJURED	
	2012	2013	2012	2013	2012	2013	2012	2013	2012	2013	2012	2013	2012	2013	2012	2013	2012	2013
JEFFERSON	22,565	19,967	111	82	5,541	4,364	19,732	17,513	85	59	4,649	3,705	2,833	2,454	26	23	892	659
MOBILE	13,240	13,495	55	66	3,376	3,453	11,198	11,433	32	38	2,597	2,695	2,042	2,062	23	28	779	758
MONTGOMERY	8,411	8,628	31	32	2,645	2,811	7,685	7,899	24	22	2,397	2,596	726	729	7	10	248	215
AUTAUGA	1,210	1,314	12	12	411	480	784	830	5	1	260	299	426	484	7	11	151	181
BALDWIN	4,313	4,428	26	38	1,316	1,276	3,060	3,164	14	17	844	788	1,253	1,264	12	21	472	488
BARBOUR	473	477	7	5	180	176	347	343	3	2	107	119	126	134	4	3	73	57
BIBB	300	263	4	5	95	99	133	112	1	0	37	45	167	151	3	5	58	54
BLOUNT	837	790	14	13	334	291	315	286	1	1	96	63	522	504	13	12	238	228
BULLOCK	152	168	2	7	69	74	66	71	1	1	30	22	86	97	1	6	39	52
BUTLER	563	572	6	3	206	172	286	301	4	0	61	73	277	271	2	3	145	99
CALHOUN	3,469	3,412	8	9	1,233	1,140	2,482	2,515	3	4	859	744	987	897	5	5	374	396
CHAMBERS	845	735	16	9	270	241	611	516	8	0	175	155	234	219	8	9	95	86
CHEROKEE	492	509	9	15	214	231	229	228	1	1	93	94	263	281	8	14	121	137
CHILTON	848	885	10	15	362	313	387	427	1	5	134	136	461	458	9	10	228	177
CHOCTAW	151	176	3	6	81	85	69	76	0	1	27	23	82	100	3	5	54	62
CLARKE	419	473	8	8	172	216	268	300	2	1	91	127	151	173	6	7	81	89
CLAY	182	155	2	3	63	66	77	59	0	0	15	11	105	96	2	3	48	55
CLEBURNE	335	366	6	7	117	132	77	77	1	1	25	27	258	289	5	6	92	105
COFFEE	1,149	1,095	11	5	387	294	851	837	5	2	228	196	298	258	6	3	159	98
COLBERT	1,496	1,580	16	11	479	461	1,140	1,202	7	3	289	259	356	378	9	8	190	202
CONECUH	368	360	5	7	185	132	122	125	0	2	55	42	246	235	5	5	130	90
COOSA	217	200	1	3	81	75	18	14	0	2	8	9	199	186	1	1	73	66
COVINGTON	631	689	7	3	231	245	395	444	2	0	135	132	236	245	5	3	96	113
CRENSHAW	250	247	4	4	77	70	81	87	1	2	21	17	169	160	3	2	56	53
CULLMAN	2,071	2,067	15	14	612	585	1,112	1,096	5	4	252	239	959	971	10	10	360	346
DALE	874	847	10	10	321	295	637	611	6	3	203	202	237	236	4	7	118	93
DALLAS	1,044	1,023	12	8	444	386	645	617	3	0	244	200	399	406	9	8	200	186
DEKALB	1,190	1,070	18	16	427	452	727	619	4	7	219	242	463	451	14	9	208	210
ELMORE	1,819	1,843	10	16	637	637	1,148	1,197	4	5	391	425	671	646	6	11	246	212
ESCAMBIA	752	800	13	10	296	319	378	423	0	0	99	109	374	377	13	10	197	210
ETOWAH	2,831	3,041	14	13	1,058	1,025	2,304	2,468	7	9	754	754	527	573	7	4	304	271
FAYETTE	237	254	1	3	99	110	112	142	0	0	37	41	125	112	1	3	62	69
FRANKLIN	488	488	4	3	214	204	252	271	0	0	82	90	236	217	4	3	132	114

COUNTY	TOTAL CRASHES FOR COUNTY						URBAN AREAS OF COUNTY						RURAL AREAS OF COUNTY					
	NUMBER OF CRASHES		PERSONS KILLED		PERSONS INJURED		NUMBER OF CRASHES		PERSONS KILLED		PERSONS INJURED		NUMBER OF CRASHES		PERSONS KILLED		PERSONS INJURED	
	2012	2013	2012	2013	2012	2013	2012	2013	2012	2013	2012	2013	2012	2013	2012	2013	2012	2013
GENEVA	373	375	4	2	145	109	165	179	1	1	58	31	208	196	3	1	87	78
GREENE	251	244	5	11	120	98	45	56	1	0	12	21	206	188	4	11	108	77
HALE	235	289	1	6	144	138	108	120	0	0	62	40	127	169	1	6	82	98
HENRY	215	226	0	0	69	74	113	107	0	0	26	28	102	119	0	0	43	46
HOUSTON	3,235	3,307	13	15	1,241	1,237	2,844	2,863	6	7	1,080	1,068	391	444	7	8	161	169
JACKSON	909	870	7	11	407	344	589	561	1	4	242	200	320	309	6	7	165	144
LAMAR	154	162	3	3	81	74	65	61	0	1	19	11	89	101	3	2	62	63
LAUDERDALE	2,129	2,157	17	12	607	595	1,522	1,593	2	1	321	344	607	564	15	11	286	251
LAWRENCE	547	486	7	7	264	190	135	134	0	0	50	46	412	352	7	7	214	144
LEE	4,319	4,434	13	12	1,048	1,023	3,583	3,710	6	5	805	792	736	724	7	7	243	231
LIMESTONE	1,747	1,661	10	21	543	534	872	741	2	4	211	171	875	920	8	17	332	363
LOWNDES	324	323	5	10	120	128	39	33	2	3	20	8	285	290	3	7	100	120
MACON	620	609	4	8	205	207	209	185	1	2	63	75	411	424	3	6	142	132
MARENGO	300	293	8	6	180	128	167	151	4	1	71	43	133	142	4	5	109	85
MARION	492	510	9	8	241	245	322	327	2	4	146	133	170	183	7	4	95	112
MARSHALL	2,140	2,152	18	19	800	735	1,655	1,672	7	7	557	508	485	480	11	12	243	227
MONROE	170	214	10	2	93	128	31	56	1	1	8	15	139	158	9	1	85	113
MORGAN	3,197	3,132	18	17	970	886	2,433	2,419	6	6	669	635	764	713	12	11	301	251
PERRY	113	101	8	3	78	50	18	25	2	1	13	4	95	76	6	2	65	46
PICKENS	291	300	8	8	137	102	126	121	1	1	41	29	165	179	7	7	96	73
PIKE	886	900	4	7	349	276	639	635	0	1	178	162	247	265	4	6	171	114
RANDOLPH	331	307	7	10	190	103	146	133	0	1	86	28	185	174	7	9	104	75
RUSSELL	2,103	2,095	12	16	852	788	1,578	1,531	6	6	609	580	525	564	6	10	243	208
SAINT CLAIR	1,676	1,684	17	16	1,161	1,240	1,008	4,105	7	4	798	832	668	1,424	10	12	363	408
SHELBY	5,086	5,529	29	14	685	567	3,789	993	15	4	393	287	1,297	691	14	10	292	280
SUMTER	243	271	1	6	161	173	103	112	0	1	83	99	140	159	1	5	78	74
TALLADEGA	1,787	1,681	19	27	777	597	1,165	1,029	6	10	471	320	622	652	13	17	306	277
TALLAPOOSA	695	702	10	9	236	264	493	534	6	8	154	195	202	168	4	1	82	69
TUSCALOOSA	6,960	7,075	40	26	1,853	1,856	5,487	5,672	16	15	1,310	1,391	1,473	1,403	24	11	543	465
WALKER	1,658	1,569	20	20	664	561	973	897	8	6	310	254	685	672	12	14	354	307
WASHINGTON	195	206	4	2	104	88	30	51	0	1	9	20	165	155	4	1	95	68
WILCOX	154	169	6	7	130	101	57	50	2	1	47	25	97	119	4	6	83	76
WINSTON	316	296	8	5	146	121	187	183	3	2	69	52	129	113	5	3	77	69

# COMPARATIVE CITY STATISTICS

## 2012 VS. 2013

CITY	CRASHES		PERSONS KILLED		PERSONS INJURED	
	2012	2013	2012	2013	2012	2013
ABBEVILLE	42	27	0	0	11	11
ADAMSVILLE	191	198	1	1	60	53
ADDISON	13	14	0	0	4	7
AKRON	1	1	0	0	0	0
ALABASTER	821	886	0	2	211	213
ALBERTVILLE	674	673	0	6	240	195
ALEXANDER CITY	334	356	4	4	93	134
ALICEVILLE	13	12	0	1	11	10
ALLGOOD	10	2	0	0	7	0
ALTOONA	5	10	0	0	2	2
ANDALUSIA	205	235	0	0	63	58
ANDERSON	5	5	0	0	0	4
ANNISTON	1,221	1,270	1	2	445	390
ARAB	214	190	3	0	63	54
ARDMORE	50	39	0	0	13	8
ARGO	7	10	0	0	5	1
ARITON	7	6	0	0	3	1
ARLEY	6	12	0	1	4	1
ASHFORD	28	36	0	0	12	17
ASHLAND	39	37	0	0	13	6
ASHVILLE	71	71	2	1	39	36
ATHENS	664	530	0	2	132	105
ATMORE	113	119	0	0	34	39
ATTALLA	212	222	2	0	50	52
AUBURN	1,566	1,559	3	0	375	341
AUTAUGAVILLE	4	6	0	0	1	3
AVON	1	2	0	0	0	0
BABBIE	9	9	0	0	2	2
BAILEYTON	14	12	0	0	15	6
BAKERHILL	4	5	0	0	4	1
BANKS	3	0	0	0	1	0
BAY MINETTE	126	149	0	0	41	47
BAYOU LA BATRE	70	78	0	0	32	22
BEAR CREEK	12	14	2	0	6	6
BEATRICE	1	2	0	0	3	1
BEAVERTON	0	1	0	0	0	0
BELK	1	3	0	0	0	2
BELLWOOD	5	3	0	0	1	0
BENTON	2	3	0	0	1	3
BERRY	14	13	0	0	7	4

CITY	CRASHES		PERSONS KILLED		PERSONS INJURED	
	2012	2013	2012	2013	2012	2013
BESSEMER	1,541	1,547	9	8	451	420
BIG COVE	0	1	0	0	0	0
BILLINGSLEY	0	1	0	0	0	0
BIRMINGHAM	10,532	8,189	46	30	2,484	1,743
BLACK	3	0	0	0	0	0
BLOUNTSVILLE	45	34	0	0	25	10
BLUE MOUNTAIN	1	4	0	0	3	3
BLUE SPRINGS	0	0	0	0	0	0
BOAZ	352	391	1	0	125	134
BOLIGEE	2	0	0	0	1	0
BON AIR	0	0	0	0	0	0
BRANCHVILLE	0	2	0	0	0	5
BRANTLEY	0	4	0	1	0	3
BRENT	46	39	0	0	9	15
BREWTON	205	210	0	0	48	46
BRIDGEPORT	40	25	0	1	27	18
BRIGHTON	43	4	0	0	36	2
BRILLIANT	14	5	0	0	8	2
BROOKSIDE	0	2	0	0	0	0
BROOKWOOD	0	3	0	1	0	3
BROWNSVILLE	0	0	0	0	0	0
BRUNDIDGE	34	43	0	1	11	10
BUTLER	46	42	0	1	21	15
CALERA	475	537	3	1	76	109
CAMDEN	28	25	0	0	23	9
CAMP HILL	31	26	0	1	22	3
CARBON HILL	29	32	0	0	8	6
CARDIFF	0	0	0	0	0	0
CAROLINA	4	6	0	0	3	2
CARROLLTON	20	33	0	0	3	6
CARRVILLE	0	0	0	0	0	0
CASTLEBERRY	9	8	0	0	6	3
CEDAR BLUFF	41	23	0	0	30	9
CENTER POINT	47	1	0	0	11	0
CENTRE	145	142	0	0	49	65
CENTREVILLE	35	33	1	0	15	22
CHATOM	12	15	0	1	5	6
CHELSEA	97	161	0	1	18	24
CHEROKEE	6	10	0	0	1	1
CHICKASAW	63	55	0	0	33	31



CITY	CRASHES		PERSONS KILLED		PERSONS INJURED	
	2012	2013	2012	2013	2012	2013
CHILDERSBURG	110	95	3	1	43	19
CITRONELLE	92	94	0	0	18	25
CLANTON	292	318	0	1	94	94
CLAY	14	0	0	0	3	0
CLAYHATCHEE	4	4	0	0	2	0
CLAYTON	12	12	0	0	3	5
CLEVELAND	15	11	1	1	10	3
CLIO	2	6	0	0	0	0
COALING	43	28	1	0	27	11
COFFEE SPRINGS	4	3	0	0	0	0
COFFEEVILLE	3	1	0	0	2	0
COLLINSVILLE	36	35	0	0	20	12
COLONY	8	4	0	0	1	3
COLUMBIA	10	12	0	0	5	0
COLUMBIANA	89	98	0	0	25	29
COOSADA	26	35	0	0	12	22
CORDOVA	41	25	1	1	11	5
COTTONWOOD	7	9	0	0	1	1
COUNTY LINE-JEFF	1	1	0	0	0	0
COURTLAND	6	3	0	0	4	1
COWARTS	20	19	1	0	5	11
CREOLA	44	60	0	1	16	18
CROSSVILLE	26	35	0	0	10	14
CUBA	10	20	0	0	9	16
CULLMAN	764	802	1	2	140	162
DADEVILLE	80	74	2	0	20	18
DALEVILLE	124	95	0	1	42	25
DAPHNE	734	763	1	2	184	160
DAUPHIN ISLAND	18	19	0	1	5	3
DAVISTON	0	1	0	0	0	0
DAYTON	1	0	0	0	0	0
DEATSVILLE	0	0	0	0	0	0
DECATUR	1,935	1,911	5	3	541	507
DEMOPOLIS	131	111	1	1	63	25
DETROIT	0	3	0	1	0	6
DODGE CITY	33	38	3	1	9	13
DORA	65	80	0	0	28	9
DOTHAN	2,712	2,705	5	6	1,021	1,017
DOUBLE SPRINGS	26	31	0	0	14	13
DOUGLAS	20	17	1	0	5	7

CITY	CRASHES		PERSONS KILLED		PERSONS INJURED	
	2012	2013	2012	2013	2012	2013
DOZIER	5	2	0	0	0	1
DUTTON	5	5	0	0	3	1
EAST BREWTON	28	53	0	0	5	1
ECLECTIC	28	27	1	0	3	11
EDWARDSVILLE	2	1	0	0	2	1
ELBA	46	44	1	0	19	13
ELBERTA	40	68	0	1	27	8
ELDRIDGE	1	2	0	0	0	0
ELKMONT	3	4	0	0	1	2
ELMORE	17	16	0	0	2	3
EMELLE	0	0	0	0	0	0
ENTERPRISE	799	782	4	2	210	177
EPES	1	1	0	0	1	1
ETHELVSVILLE	0	0	0	0	0	0
EUFAULA	327	320	3	2	100	113
EUNOLA	1	2	0	0	2	0
EUTAW	42	54	1	0	11	21
EVA	2	2	0	0	0	1
EVERGREEN	109	109	0	2	49	36
EXCEL	27	34	0	0	4	8
FAIRFIELD	266	234	1	1	67	56
FAIRHOPE	431	400	0	1	91	70
FAIRVIEW	14	13	0	0	6	4
FALKVILLE	31	25	0	1	10	6
FAUNSDALE	0	1	0	0	0	0
FAYETTE	92	111	0	0	27	28
FIVE POINTS	1	1	0	0	2	1
FLINT CITY	0	0	0	0	0	0
FLOMATON	30	37	0	0	11	22
FLORALA	30	40	0	0	9	5
FLORENCE	1,344	1,440	2	0	264	297
FOLEY	585	602	4	2	177	155
FORKLAND	1	1	0	0	0	0
FORT DEPOSIT	11	4	0	0	4	1
FORT PAYNE	327	218	2	2	57	54
FRANKLIN	8	7	0	0	2	2
FRISCO CITY	1	16	0	1	0	4
FRUITHURST	3	2	0	0	2	0
FULTON	1	4	0	0	0	6
FULTONDALE	261	241	6	0	72	56

# COMPARATIVE CITY STATISTICS

## 2012 VS. 2013 (continued)

CITY	CRASHES		PERSONS KILLED		PERSONS INJURED	
	2012	2013	2012	2013	2012	2013
FYFFE	14	23	0	0	4	9
GADSDEN	1,458	1,624	2	6	503	527
GAINESVILLE	1	1	0	0	0	0
GANTT	2	5	0	0	2	0
GANTTS QUARRY	1	0	0	0	0	0
GARDEN CITY	4	6	0	0	1	4
GARDENDALE	225	296	2	3	63	100
GAYLESVILLE	1	7	0	0	0	1
GEIGER	0	0	0	0	0	0
GENEVA	62	72	0	1	23	18
GEORGIANA	40	42	0	0	8	16
GERALDINE	20	25	0	0	3	6
GILBERTOWN	12	23	0	0	0	6
GLEN ALLEN	1	1	0	0	0	1
GLENCOE	98	113	1	0	51	46
GLENWOOD	0	1	0	0	0	0
GOLDVILLE	0	0	0	0	0	0
GOOD HOPE	81	65	0	0	21	8
GOODWATER	12	10	0	0	4	3
GORDO	42	36	1	0	13	8
GORDON	5	5	0	0	8	0
GORDONVILLE	1	1	0	0	0	0
GOSHEN	0	2	0	0	0	3
GRANT	17	24	0	0	5	4
GRAYSVILLE	8	20	1	0	3	6
GREENSBORO	71	68	0	0	46	17
GREENVILLE	244	256	3	0	50	56
GRIMES	12	10	0	0	3	2
GROVE HILL	39	28	0	1	11	9
GU-WIN	3	1	0	0	3	1
GUIN	26	32	0	1	9	13
GULF SHORES	540	528	5	5	139	125
GUNTERSVILLE	396	392	3	1	125	118
GURLEY	41	40	0	0	31	15
HACKLEBURG	24	28	0	0	5	12
HALEBURG	0	0	0	0	0	0
HALEYVILLE	142	126	1	1	42	33
HAMILTON	150	148	0	3	70	66
HAMMONDVILLE	9	15	0	0	3	18
HANCEVILLE	150	116	0	0	38	26

CITY	CRASHES		PERSONS KILLED		PERSONS INJURED	
	2012	2013	2012	2013	2012	2013
HARPERSVILLE	33	27	0	0	19	3
HARTFORD	33	41	0	0	7	1
HARTSELLE	383	399	1	1	93	91
HAYDEN	29	16	0	0	2	4
HAYNEVILLE	12	12	0	2	12	1
HEADLAND	70	79	0	0	15	17
HEATH	4	7	0	0	3	8
HEFLIN	62	64	1	1	17	20
HELENA	175	216	1	1	43	53
HENAGAR	49	30	1	2	27	19
HIGDON	6	2	0	0	9	0
HIGHLAND LAKE	1	0	0	0	0	0
HILLSBORO	2	1	0	0	2	2
HOBSON CITY	8	3	0	0	3	1
HODGES	0	0	0	0	0	0
HOKES BLUFF	59	70	0	2	28	26
HOLLY POND	20	13	1	1	7	7
HOLLYWOOD	23	16	0	0	16	5
HOMEWOOD	1,542	1,671	2	0	219	203
HOOVER	2,733	2,760	5	4	567	566
HORNHILL	1	1	0	0	0	3
HUEYTOWN	238	236	3	0	54	63
HUNTSVILLE	7,397	7,391	25	25	2,270	1,994
HURTSBORO	3	8	0	0	2	3
HYTOP	0	0	0	0	0	0
IDER	15	13	0	0	6	1
INDIAN SPRINGS	21	17	0	0	2	4
IRONDALE	193	236	2	0	49	87
JACKSON	115	123	1	0	48	55
JACKSONS GAP	12	16	0	2	5	7
JACKSONVILLE	224	226	0	0	100	68
JASPER	729	645	7	5	224	193
JEMISON	47	66	0	2	23	16
KANSAS	1	1	0	0	0	2
KELLY	0	0	0	0	0	0
KENNEDY	1	7	0	0	0	1
KILLEN	80	62	0	0	30	18
KIMBERLY	11	7	0	0	10	5
KINSEY	16	20	0	0	11	7
KINSTON	3	5	0	0	0	3

CITY	CRASHES		PERSONS KILLED		PERSONS INJURED	
	2012	2013	2012	2013	2012	2013
LAFAYETTE	43	41	1	0	16	19
LAKE VIEW	18	21	0	1	4	4
LAKEVIEW	8	3	0	0	7	2
LANETT	248	207	1	0	67	44
LANGSTON	1	0	0	0	0	0
LEEDS	231	219	3	5	66	52
LEESBURG	38	52	1	1	12	19
LEIGHTON	4	9	1	0	0	4
LESTER	0	1	0	0	0	0
LEVEL PLAINS	26	29	0	0	7	15
LEXINGTON	16	13	0	1	4	2
LIBERTYVILLE	0	1	0	0	0	0
LINCOLN	254	264	1	3	116	63
LINDEN	25	29	1	0	7	11
LINEVILLE	38	22	0	0	2	5
LIPSCOMB	0	0	0	0	0	0
LISMAN	2	0	0	0	0	0
LITTLEVILLE	18	23	1	0	11	19
LIVINGSTON	67	73	0	1	68	77
LOACHAPOKA	2	9	0	0	1	3
LOCKHART	2	4	0	0	0	4
LOCUST FORK	9	4	0	0	2	0
LOUISVILLE	2	0	0	0	0	0
LOWNDESBORO	6	6	0	0	2	0
LOXLEY	138	147	0	1	48	41
LUVERNE	72	71	1	0	17	7
LYNN	14	6	2	0	9	1
MACEDONIA	0	0	0	0	0	0
MADISON	1,111	1,096	5	1	253	282
MADRID	1	1	0	0	1	0
MALVERN	14	12	1	0	7	4
MAPLESVILLE	21	15	1	0	12	7
MARGARET	15	17	0	1	8	6
MARION	5	10	2	1	5	2
MAYTOWN	0	0	0	0	0	0
MCINTOSH	12	23	0	0	2	8
MCKENZIE	2	5	1	0	3	1
MCMULLEN	0	0	0	0	0	0
MEMPHIS	0	0	0	0	0	0
MENTONE	5	8	0	0	1	1

CITY	CRASHES		PERSONS KILLED		PERSONS INJURED	
	2012	2013	2012	2013	2012	2013
MIDFIELD	174	162	0	0	76	50
MIDLAND CITY	55	70	2	0	18	21
MIDWAY	2	1	0	0	1	0
MILLBROOK	392	401	0	3	137	127
MILLPORT	1	0	0	0	1	0
MILLRY	6	13	0	0	2	6
MOBILE	9,739	9,943	29	28	2,130	2,261
MONROEVILLE	2	2	1	0	1	0
MONTEVALLO	140	138	0	0	42	34
MONTGOMERY	7,651	7,864	22	22	2384	2590
MOODY	270	259	5	0	76	58
MOORES CROSSROADS	1	2	0	0	0	0
MOORESVILLE	0	1	0	0	0	0
MORRIS	38	16	0	0	16	2
MOSSES	4	1	2	0	0	0
MOULTON	108	108	0	0	34	34
MOUNDVILLE	37	54	0	0	17	23
MOUNTAIN BROOK	485	628	0	2	60	89
MOUNTAINBORO	0	0	0	0	0	0
MT. VERNON	35	27	0	0	22	16
MULGA	3	0	0	0	0	0
MUNFORD	33	23	0	0	35	12
MUSCLE SHOALS	612	637	1	3	133	127
MYRTLEWOOD	1	0	0	0	0	0
NAPIER FIELD	0	3	0	0	0	0
NAUVOO	3	2	0	0	0	1
NECTAR	4	5	0	0	2	4
NEEDHAM	0	0	0	0	0	0
NEW BROCKTON	5	8	0	0	0	5
NEW HOPE	37	42	1	1	19	17
NEW SITE	3	6	0	0	3	4
NEWBERN	0	1	0	0	0	1
NEWSOME	0	0	0	0	0	0
NEWTON	45	42	0	0	15	14
NEWVILLE	1	1	0	0	0	0
NORTH BIBB	0	0	0	0	0	0
NORTH COURTLAND	2	3	0	0	0	2
NORTH JOHNS	0	0	0	0	0	0
NORTHPORT	1,025	987	4	5	228	217
NOTASULGA	11	11	0	0	5	2

# COMPARATIVE CITY STATISTICS

## 2012 VS. 2013 (continued)

CITY	CRASHES		PERSONS KILLED		PERSONS INJURED	
	2012	2013	2012	2013	2012	2013
OAK GROVE	29	16	0	0	11	8
OAK HILL	0	1	0	0	0	0
OAKMAN	1	8	0	0	0	2
ODENVILLE	109	109	0	0	62	42
OHATCHEE	29	32	0	1	20	8
ONEONTA	152	165	0	0	33	27
ONYCHA	4	1	0	0	0	0
OPELIKA	1,880	2,004	3	4	382	391
OPP	112	113	0	0	46	39
ORANGE BEACH	211	219	2	3	60	82
ORRVILLE	5	5	0	0	0	2
OWENS CROSSROADS	35	28	2	0	8	16
OXFORD	884	865	2	1	235	243
OZARK	341	325	3	2	107	111
PAINT ROCK	5	6	0	0	1	2
PARRISH	9	1	0	0	1	0
PELHAM	1,024	1,074	3	0	209	164
PELL CITY	359	346	3	1	133	94
PENNINGTON	3	3	0	0	1	0
PETREY	0	0	0	0	0	0
PHENIX CITY	1,605	1,553	6	6	619	591
PHIL CAMPBELL	16	17	0	0	3	7
PICKENSVILLE	2	4	0	0	0	1
PIEDMONT	84	88	0	0	36	20
PIKE ROAD	34	35	2	0	13	6
PINCKARD	16	23	1	0	1	10
PINE APPLE	1	3	0	0	0	1
PINE HILL	27	20	2	1	23	12
PINE RIDGE	5	3	0	0	3	2
PISGAH	6	5	0	0	4	0
PLEASANT GROVE	74	69	0	0	39	19
POLLARD	0	0	0	0	0	0
POWELL	18	20	0	0	2	12
PRATTVILLE	921	950	6	1	296	340
PRICEVILLE	97	91	0	1	27	33
PRICHARD	598	651	3	6	209	177
PROVIDENCE	2	1	2	0	0	0
RAGLAND	18	15	1	0	9	5
RAINBOW CITY	273	236	0	0	59	45
RAINSVILLE	144	142	0	2	48	79

CITY	CRASHES		PERSONS KILLED		PERSONS INJURED	
	2012	2013	2012	2013	2012	2013
RANBURNE	10	10	0	0	4	6
RED BAY	42	50	0	0	9	15
RED LEVEL	3	5	0	0	1	2
REECE CITY	7	5	0	0	0	0
REFORM	49	36	0	0	14	4
REHOBETH	5	11	0	0	0	6
REPTON	4	6	0	0	0	3
RIDGEVILLE	0	1	0	0	0	1
RIVER FALLS	10	10	0	0	0	4
RIVERSIDE	32	35	2	0	17	11
RIVERVIEW	2	4	0	0	1	1
ROANOKE	107	99	0	0	71	19
ROBERTSDALE	148	192	1	0	34	46
ROCKFORD	6	4	0	2	4	6
ROGERSVILLE	32	25	0	0	6	11
ROOSEVELT CITY	0	0	0	0	0	0
ROSA	3	1	0	0	1	0
RURAL AUTAUGA	426	484	7	11	151	181
RURAL BALDWIN	1,253	1,264	12	21	472	488
RURAL BARBOUR	126	134	4	3	73	57
RURAL BIBB	167	151	3	5	58	54
RURAL BLOUNT	522	504	13	12	238	228
RURAL BULLOCK	86	97	1	6	39	52
RURAL BUTLER	277	271	2	3	145	99
RURAL CALHOUN	987	897	5	5	374	396
RURAL CHAMBERS	234	219	8	9	95	86
RURAL CHEROKEE	263	281	8	14	121	137
RURAL CHILTON	461	458	9	10	228	177
RURAL CHOCTAW	82	100	3	5	54	62
RURAL CLARKE	151	173	6	7	81	89
RURAL CLAY	105	96	2	3	48	55
RURAL CLEBURNE	258	289	5	6	92	105
RURAL COFFEE	298	258	6	3	159	98
RURAL COLBERT	356	378	9	8	190	202
RURAL CONECUH	246	235	5	5	130	90
RURAL COOSA	199	186	1	1	73	66
RURAL COVINGTON	236	245	5	3	96	113
RURAL CRENSHAW	169	160	3	2	56	53
RURAL CULLMAN	959	971	10	10	360	346
RURAL DALE	237	236	4	7	118	93

CITY	CRASHES		PERSONS KILLED		PERSONS INJURED	
	2012	2013	2012	2013	2012	2013
RURAL DALLAS	399	406	9	8	200	186
RURAL DEKALB	463	451	14	9	208	210
RURAL ELMORE	671	646	6	11	246	212
RURAL ESCAMBIA	374	377	13	10	197	210
RURAL ETOWAH	527	573	7	4	304	271
RURAL FAYETTE	125	112	1	3	62	69
RURAL FRANKLIN	236	217	4	3	132	114
RURAL GENEVA	208	196	3	1	87	78
RURAL GREENE	206	188	4	11	108	77
RURAL HALE	127	169	1	6	82	98
RURAL HENRY	102	119	0	0	43	46
RURAL HOUSTON	391	444	7	8	161	169
RURAL JACKSON	320	309	6	7	165	144
RURAL JEFFERSON	2,833	2,454	26	23	892	659
RURAL LAMAR	89	101	3	2	62	63
RURAL LAUDERDALE	607	564	15	11	286	251
RURAL LAWRENCE	412	352	7	7	214	144
RURAL LEE	736	724	7	7	243	231
RURAL LIMESTONE	875	920	8	17	332	363
RURAL LOWNDES	285	290	3	7	100	120
RURAL MACON	411	424	3	6	142	132
RURAL MADISON	1713	1636	23	10	631	607
RURAL MARENGO	133	142	4	5	109	85
RURAL MARION	170	183	7	4	95	112
RURAL MARSHALL	485	480	11	12	243	227
RURAL MOBILE	2,042	2,062	23	28	779	758
RURAL MONROE	139	158	9	1	85	113
RURAL MONTGOMERY	726	729	7	10	248	215
RURAL MORGAN	764	713	12	11	301	251
RURAL PERRY	95	76	6	2	65	46
RURAL PICKENS	165	179	7	7	96	73
RURAL PIKE	247	265	4	6	171	114
RURAL RANDOLPH	185	174	7	9	104	75
RURAL RUSSELL	525	564	6	10	243	208
RURAL SHELBY	1,297	1,424	10	12	363	408
RURAL ST. CLAIR	668	691	14	10	292	280
RURAL SUMTER	140	159	1	5	78	74
RURAL TALLADEGA	622	652	13	17	306	277
RURAL TALLAPOOSA	202	168	4	1	82	69
RURAL TUSCALOOSA	1,473	1,403	24	11	543	465

CITY	CRASHES		PERSONS KILLED		PERSONS INJURED	
	2012	2013	2012	2013	2012	2013
RURAL WALKER	685	672	12	14	354	307
RURAL WASHINGTON	165	155	4	1	95	68
RURAL WILCOX	97	119	4	6	83	76
RURAL WINSTON	129	113	5	3	77	69
RUSSELLVILLE	194	202	0	0	70	65
RUTLEDGE	4	9	0	1	4	6
SAMSON	22	24	0	0	10	3
SAND ROCK	4	4	0	0	2	0
SANFORD	9	7	2	0	6	5
SARALAND	463	443	0	2	114	122
SARDIS CITY	48	44	0	0	19	15
SATSUMA	76	63	0	0	18	20
SCOTTSBORO	420	402	0	2	152	135
SECTION	18	20	0	0	2	6
SELMA	627	605	2	0	238	197
SHEFFIELD	260	276	3	0	95	70
SHILOH	9	6	0	0	3	3
SHORTER	2	1	0	0	0	0
SILAS	2	3	0	0	1	1
SILURIA	1	0	0	0	0	0
SILVERHILL	27	19	1	0	14	12
SIPSEY	5	1	0	0	0	0
SKYLINE	20	9	0	0	12	6
SLOCOMB	21	22	0	0	8	5
SMITHS STATION	102	107	0	1	35	43
SNEAD	39	33	0	0	11	11
SOMERVILLE	10	5	0	0	7	0
SOUTHSIDE	115	116	1	1	37	39
SPANISH FORT	10	0	0	0	5	0
SPRINGVILLE	61	62	0	0	13	15
ST. FLORIAN	45	47	0	0	17	11
STEELE	20	17	0	0	11	5
STEVENSON	36	54	1	1	12	16
SULLIGENT	27	28	0	0	11	3
SUMITON	89	100	0	0	38	36
SUMMERDALE	71	75	0	2	24	41
SUSAN MOORE	6	11	0	0	3	3
SWEET WATER	1	2	0	0	0	5
SYLACAUGA	325	262	1	1	93	51
SYLVANIA	32	19	1	1	18	3

# COMPARATIVE CITY STATISTICS

## 2012 VS. 2013 (continued)

CITY	CRASHES		PERSONS KILLED		PERSONS INJURED	
	2012	2013	2012	2013	2012	2013
SYLVANIA SPRINGS	0	0	0	0	0	0
TALLADEGA	399	357	0	5	164	159
TALLADEGA SPRINGS	0	2	0	0	0	2
TALLASSEE	126	179	0	2	46	75
TARRANT CITY	67	129	1	3	26	39
TAYLOR	17	27	0	0	5	5
THOMASTON	6	7	0	0	1	2
THOMASVILLE	110	144	1	0	30	57
THORSBY	26	25	0	1	5	17
TOWN CREEK	17	19	0	0	10	7
TOXEY	4	5	0	0	4	1
TRAFFORD	4	0	0	0	2	0
TRIANA	4	3	0	0	4	0
TRINITY	26	31	0	0	9	11
TROY	602	590	0	0	166	149
TRUSSVILLE	916	863	3	2	236	242
TUSCALOOSA	4,386	4,587	11	8	1,043	1,135
TUSCUMBIA	240	247	1	0	49	38
TUSKEGEE	190	166	1	2	56	71
TWIN	1	3	0	0	1	0
UNION	0	1	0	0	0	0
UNION GROVE	2	3	0	0	1	0
UNION SPRINGS	64	70	1	1	29	22
UNIONTOWN	13	15	0	0	8	2
VALLEY	319	267	6	0	90	91
VALLEY GRANDE	13	7	1	0	6	1
VALLEY HEAD	10	24	0	0	7	7
VANCE	8	18	0	0	7	6
VERNON	36	22	0	0	7	1
VESTAVIA HILLS	795	884	1	0	127	115
VINA	0	2	0	0	0	3
VINCENT	2	9	0	0	0	1
VINEMONT	16	11	0	0	10	4
VREDENBURGH	0	2	0	0	0	2
WADLEY	1	1	0	0	0	0
WALDO	8	4	1	0	9	4
WALNUT GROVE	10	14	0	0	3	4
WARRIOR	25	29	1	1	15	15
WATERLOO	0	1	0	0	0	1
WAVERLY	1	1	0	0	0	0

CITY	CRASHES		PERSONS KILLED		PERSONS INJURED	
	2012	2013	2012	2013	2012	2013
WEAVER	36	32	0	0	12	8
WEBB	27	18	0	1	15	5
WEDOWEE	33	33	0	1	15	9
WEST BLOCTON	23	15	0	0	5	5
WEST END	0	0	0	0	0	0
WEST JEFFERSON	3	0	0	0	4	0
WEST POINT	8	16	0	0	4	2
WESTON	0	0	0	0	0	0
WESTOVER	11	13	0	0	3	6
WETUMPKA	451	465	2	1	165	172
WHITEHALL	3	6	0	1	1	3
WHITES CHAPEL	0	0	0	0	0	0
WILMER	0	0	0	0	0	0
WILSONVILLE	6	6	0	0	2	2
WILTON	3	4	0	0	0	1
WINFIELD	82	104	0	0	43	36
WOODLAND	5	0	0	0	0	0
WOODSTOCK	34	49	0	0	8	17
WOODVILLE	8	15	0	0	4	11
YELLOW BLUFF	1	1	0	0	1	3
YORK	24	17	0	0	5	5
UNKNOWN	11	42	0	0	0	7



# Alabama Department of Transportation dot.state.al.us

## Media & Community Relations Bureau

### Central Office:

1409 Coliseum Boulevard, Montgomery, Alabama 36110

#### TONY HARRIS

*Bureau Chief &  
Government Relations Manager*  
334.242.6552  
harrist@dot.state.al.us

#### ALLISON GREEN

*Marketing & Communication Specialist  
Drive Safe Alabama Coordinator*  
334.353.6534  
greena@dot.state.al.us

#### JOSH PHILLIPS

*Public Information Officer*  
334.242.6730  
phillipsjo@dot.state.al.us



## Regional Public Information Offices

### NORTH REGION

1525 Perimeter Parkway  
Huntsville, AL 35086

#### Seth Burkett

*Public Information Officer*  
256.505.4964  
burkettst@dot.state.al.us

### SOUTHWEST REGION

1701 I-65 West Service Road North  
Mobile, AL 36618

#### Kathryn Schulte

*Public Information Officer*  
251.470.8375  
schultek@dot.state.al.us  
Twitter @ALDOTMobileArea

### WEST CENTRAL REGION

204 Marina Drive  
Tuscaloosa, AL 35406

#### Josh Phillips

*Public Information Officer*  
334.242.6730  
phillipsjo@dot.state.al.us

### SOUTHEAST REGION

Capitol Commerce Center  
100 Capitol Commerce Boulevard

Building B, Suite 210  
Montgomery, AL 36117

#### Brantley Kirk

*Public Information Officer*  
334.353.6862  
kirkb@dot.state.al.us

### EAST CENTRAL REGION

100 Corporate Parkway, Suite 450  
Hoover, AL 35242

#### Linda Crockett

*Public Information Officer*  
205.327.4973  
crockettl@dot.state.al.us





**Alabama Department of Transportation**  
[www.dot.state.al.us](http://www.dot.state.al.us) | Contact us at [aldotinfo@dot.state.al.us](mailto:aldotinfo@dot.state.al.us)