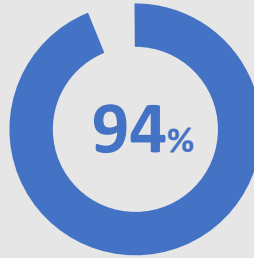




U.S. Department of Transportation
Federal Railroad Administration

Railroad Crossing Safety and Trespass Prevention

December 2017

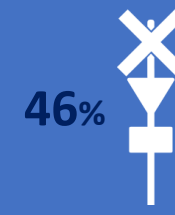
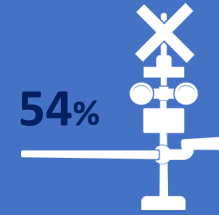


Combined, railroad crossing and trespasser deaths have accounted for approximately 94% of all rail-related deaths over the past ten years.

About every 3 hours, a person or vehicle is hit by a train.



Crossings in the U.S.

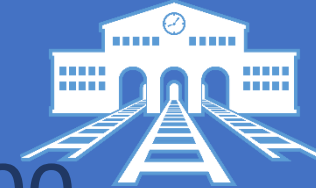


Just over one half of all public crossings are **active** (include gates, bells, and/or flashing lights) while just under half are **passive** (include signs and markings, but do not include active warning devices). Always expect a train on any track at anytime.

The U.S. Railroad System

830

Railroads



134,000

Miles of track

216,000

Railroad crossings

Safety Trends

Overall crossing fatalities have declined but trespasser fatalities have slightly increased...

-23%

In the past 10 years fatalities at U.S. crossings have declined substantially.

1%

Unfortunately, over the same 10 year period, trespass fatalities have slightly increased.

2016 saw railroad crossing fatalities increase compared to the previous year...



In 2016 there were approximately 260 fatalities at railroad crossings, an increase of 20 from the previous year.

= 10 fatalities

similarly trespasser fatalities increased in 2016.



In 2016 there were approximately 480 trespasser fatalities at railroad tracks, an increase of 30 from the previous year.



73%

Almost three-fourths of railroad crossing accidents occur in clear weather conditions.

Trains cannot stop quickly! A train traveling at 55 MPH takes a mile or more to stop!



For more information on rail safety, visit our Statistics page: <https://www.fra.dot.gov/Page/P0841>